

# **GOLDEN PAGES**

Products  
Catalogue

The logo for Alumil features the word "Alumil" in a bold, dark grey sans-serif font. The letter "A" is stylized with a diagonal slash. The letter "i" has a yellow dot and a yellow vertical bar extending upwards from its stem. The background of the entire page is composed of large, overlapping geometric shapes in yellow and dark grey.

Building excellence every day

# ALUMIL Group

With more than 30 years of experience and 2.200 employees, ALUMIL is one of the most advanced companies globally in the design and production of aluminium architectural systems, owning state-of-the art production lines in its 12 factories in Europe.

ALUMIL produces high quality aluminium systems which are designed and developed in the Group's innovative Research & Development Department and then tested and certified by internationally accredited certification institutes and laboratories, such as ift Rosenheim (Germany), A.A.M.A (USA), Istituto Giordano (Italy), CSTB (France), ATG (Belgium) etc.

Advanced industrial facilities of high standards and a strong international sales network in over 60 countries worldwide, with 28 subsidiaries across the globe, in all continents, prove that ALUMIL is one of the top suppliers of architectural aluminium systems that meet the highest requirements and cover a very wide range of architectural needs:

- / High aesthetical results in accordance with the latest architectural trends.
- / Energy efficiency through advanced thermal insulated aluminium systems and shading systems.
- / Environmental friendly energy production through integration of photovoltaic systems into building cells.
- / High security level against burglaries, vandalism, fire, smoke & earthquakes.
- / Protection even in extreme weather conditions.
- / Various solutions for people with special needs.

Our mission is to improve the quality of people's life by enhancing the performance of their buildings, with products of the highest quality, technology and aesthetics.

## Industrial facilities

- 11 aluminium extrusion lines
- 8 powder coating lines
- 3 sublimation lines (wood effect colors)
- 3 anodizing plants
- 2 foundry for billet production
- 8 thermal break assembly lines
- 3 manufacturing plants for system accessories
- 1 manufacturing plant for roll-formed aluminium-foam filled profiles
- 1 production site for elevators, through the autonomous subsidiary METRON, which is specialized in automation
- 1 manufacturing plant for aluminum composite panels
- 1 manufacturing plant for polycarbonate sheets

## Production capacity

- 100.000 t of aluminium extrusion
- 75.000 t of powder coating
- 80.000 t of billets
- 22.000 t of anodized aluminium
- 30.500 t of thermal broke profiles
- 950.000 m<sup>2</sup> aluminium composite panels
- 2.000.000 m<sup>2</sup> polycarbonate sheets

At ALUMIL we are building excellence every day. Through our modern production facilities and strict quality controls along the entire production line, we ensure the creation of superior products of high added value. Our continuous research and development leads to offering unique solutions with many innovative features, which cover completely the needs of our customers.

The Alumil logo is displayed in a bold, dark blue, sans-serif font. It is positioned within a yellow triangular graphic element that points towards the top right of the page. The background of the page is a dark blue silhouette of a world map, with a specific location in North America highlighted by a purple dot and a white callout box.

**Alumil**

A white rectangular callout box with a thin black border is positioned over a purple dot on the North American continent of the world map. The text inside the box is in a dark blue, sans-serif font.

**ALUMIL**  
North America

- Headquarters 
- Subsidiaries 
- Distributors 
- Offices 
- Warehouses 

# ALUMIL WORLDWIDE





**Alumil**

## ALUMIL ALUMINIUM SYSTEMS



/ Full range of aluminium systems for all architectural applications - windows, doors, facades, cladding, atriums, railings, shutters, roller shutters, bi-folding doors, fences, pergolas, aluminium composite panels and many more - developed and tested by the Group's Research and Development department and certified by internationally renowned certification institutes and laboratories.

## G.A. PLASTICS



/ Polycarbonate sheets  
/ Aluminum and plastic related products and accessories



## METRON - AUTOMATION & ELEVATORS



- / Automation Systems
- / Automatic movement mechanisms
- / Elevators

## ALUMIL SOLAR



- / Photovoltaics - Mounting systems for solar panels

# CONTENTS

## WINDOWS & DOORS

◆ SUPREME S91	12	◆ SMARTIA MD67	34
◆ SUPREME S77	14	◆ SMARTIA MD9660	36
◆ SUPREME S77 PHOS	16	◆ SMARTIA M23000	38
◆ SUPREME SD1 15 PIVOT	18	◆ COMFORT M20000	40
◆ SUPREME SD95	20	◆ COMFORT M9400	41
◆ SUPREME SD77	22	◆ SMARTIA M15000	42
◆ SMARTIA S67	24	◆ SMARTIA M15000 BR	44
◆ SMARTIA S67 PHOS	26	◆ SMARTIA M15000 RS	45
◆ SMARTIA M11000	28	◆ COMFORT M940	46
◆ SMARTIA M20650	30	◆ COMFORT M8800	47
◆ SMARTIA M9660	32		

## SLIDING WINDOWS & DOORS

◆ SUPREME S700	52	◆ SMARTIA M23300	72
◆ SUPREME S650 PHOS	56	◆ SMARTIA M14600	74
◆ SUPREME S650 e-MOTION	58	◆ SMARTIA M12500 PHOS	76
◆ SMARTIA M630 PHOS	60	◆ COMFORT M9200	78
◆ SMARTIA S560	62	◆ COMFORT M9050	80
◆ SMARTIA S440	66	◆ COMFORT M900	81
◆ SMARTIA S350	68		

## BI-FOLDING DOORS

◆ SUPREME SF85	84	◆ SMARTIA M9800	87
◆ SMARTIA M19800	86		

## SHADING & SAFETY

◆ SMARTIA M5600	90	◆ COMFORT M13500	98
◆ SMARTIA Shutters	92	◆ SMARTIA Rolling Shutter Slats	100
◆ SMARTIA S13600	94	◆ COMFORT M850	102
◆ SMARTIA M13700	96	◆ SMARTIA Polycarbonate Sheets	104
◆ SMARTIA M13800	97		

## INTERIOR DOORS

◆ SMARTIA EXCLUSIVE 300	108	◆ SMARTIA LINEAR Twin	112
◆ SMARTIA SUITE 150	110	◆ SMARTIA LINEAR Vetro	113

## OUTDOOR SOLUTIONS

◆ SMARTIA Bioclimatic Pergolas	116	◆ SMARTIA PG 120F	120
◆ SMARTIA PG 120P Mykonos	118	◆ WOODEE Deck	122
◆ SMARTIA PG 160P Santorini	119	◆ WOOPEE Deck	124
		◆ SMARTIA FC50 Fencing	126
		◆ SMARTIA FC80 Fencing	127

## CURTAIN WALLS & FACADES

◆ SMARTIA M85S	132	◆ SMARTIA M6	144
◆ SMARTIA M65	134	◆ COMFORT M4	146
◆ SMARTIA M50	136	◆ COMFORT M3	148
◆ SMARTIA M50 Security	138	◆ SMARTIA M10800	150
◆ SMARTIA M50 Fire Proof	140	◆ SMARTIA J-Bond	152
◆ SMARTIA M7	142	◆ SMARTIA Cladding	154

## OFFICE PARTITIONS

◆ SMARTIA P200	158	◆ SMARTIA P100	160
----------------	-----	----------------	-----

## RAILINGS

◆ SMARTIA M8200	164	◆ COMFORT M8100	168
◆ SMARTIA M8250	166		

## PHOTOVOLTAICS

◆ SOLAR H2100 FREE FIELD-AS189	172	◆ SOLAR H2400 INDUSTRIAL ROOF-AS405	177
◆ SOLAR H2100 FREE FIELD-AS190	174	◆ SOLAR H2500	178
◆ SOLAR H2200 Roof	175	◆ SOLAR H2600	180
◆ SOLAR H2300	176		





## HINGED WINDOWS & DOORS





System	Thermal Insulation	$U_w = W/m^2K^{****}$	
		1 sash*	2 sashes**
SUPREME S91	◆	0.83	0.86
SUPREME S77	◆	0.90	0.95
SUPREME S77 PHOS	◆	0.87	0.90
SUPREME SD115 PIVOT	◆	0.85	-
SUPREME SD95	◆	1.30	1.27***
SUPREME SD77	◆	1.20	1.22***
SMARTIA S67	◆	1.11	1.19
SMARTIA S67 PHOS	◆	1.24	1.31
SMARTIA M11000	◆	1.58	1.68
SMARTIA M20650	◆	1.56	1.67
SMARTIA M9660	◆	1.50	1.56
SMARTIA MD67	◆	1.57	1.61***
SMARTIA MD9660	◆	1.50	1.48
SMARTIA M23000	◆	1.44	1.49
COMFORT M20000	◆	1.69	1.73
COMFORT M9400		3.04	2.81
SMARTIA M15000		2.82	3.02
SMARTIA M15000 BR		3.48	3.15***
SMARTIA M15000 RS		3.48	3.15***
COMFORT M940		2.52	2.65

\* Opening dimensions 1,00 m x 2,20 m (width x height)

\*\* Opening dimensions 1,50 m x 2,20 m (width x height)

\*\*\* Opening dimensions 2,10 m x 2,20 m (width x height)

## TECHNICAL CHARACTERISTICS



System Depth mm	Max. Sash Weight Kg	Glass Thickness mm	Certification Institute
91	180	up to 81	IFT, PHI
77	180	up to 72	IFT, ATG, PHI, AUTH
77	180	31 or 45	IFT
115	250	-	IFT
95	180	up to 54	IFT
77	180	up to 59	IFT
67	180	up to 58	IFT, AUTH
67	180	up to 58	IFT
62.5	180	up to 59	IFT, EKANAL, AUTH, NCTL, ITC
59.5	180	up to 24	EKANAL
56	180	up to 49	IFT, AUTH
67	180	up to 58	IFT
56	180	up to 49	IFT
88	150	33	IFT, EKANAL
62.5	130	up to 48	IFT, EKANAL
45	150	up to 32	IFT, AUTH
50	180	up to 47	IFT
50	180	up to 40	IFT
50	180	up to 40	IFT
37	130	up to 24	EKANAL

\*\*\*\* Calculations according to:  $\psi=0,035$  W/mK &  $U_g=1,00$  W/m<sup>2</sup>K ( $U_g=0,60$  W/m<sup>2</sup>K for SUPREME S91, SUPREME S77, SUPREME S77 PHOS and SMARTIA S67)



The SUPREME S9 1 has been specially designed in order to meet the high requirements of passive houses. It is ideal for heavy duty constructions and it offers a high level of security.

The system's development was driven by the need for best in class performances in terms of thermal insulation, watertightness as well as sound reduction. The system is the perfect solution for the most demanding markets.

- / Certified by the Passive House Institute (PHI), according to the specifications of the passive houses.
- / Only 93 mm visible aluminium face width.
- / Extremely high thermal insulation with  $U_f \geq 0,67 \text{ W/m}^2\text{K}$ .
- / Exceptional level of waterproofing achieved by a special co-extruded foam EPDM gasket.
- / For all typologies of casements and patio doors.



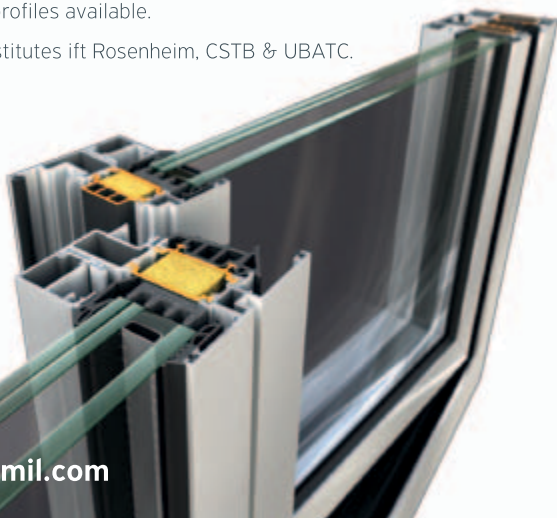
**Alumil**  
SUPREME  
S91





SUPREME S77 is ALUMIL's advanced insulating casement system with modern flat design. It is the ideal solution for projects that require high performance and maximum safety. The system satisfies the demanding levels of thermal insulation, watertightness and sound insulation.

- / High thermal insulation value  $U_f \geq 0,85 \text{ W/m}^2\text{K}$ , certified by ift Rosenheim Institute.
- / Only 93 mm visible aluminium face width.
- / Exceptional performance through 3 levels of watertightness with EPDM gaskets and co-extruded central gasket.
- / Specially designed low threshold offering easy access to children and people with special needs.
- / For all typologies of hinged windows and patio doors.
- / Wide range of sill profiles available.
- / Certified by the institutes ift Rosenheim, CSTB & UBATC.





**alumil**  
SUPREME  
S77

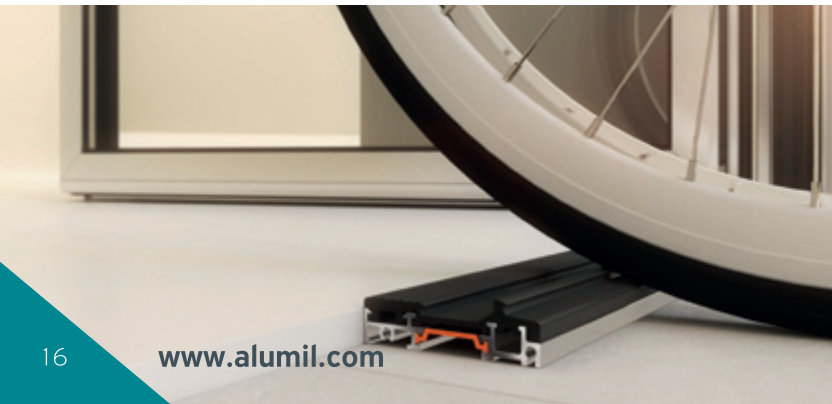






The system SUPREME S77 PHOS offers the option for frames with concealed sash and fittings. This version is ideal for maximizing the natural light thanks to its significantly reduced visible aluminium face width. In addition, the system offers high thermal insulation and watertightness performance, which in combination with the high sound reduction make it ideal for the most demanding projects.

- / Minimum visible aluminium face width 67 mm.
- / High thermal insulation with  $U_w = 0,90 \text{ W/m}^2\text{K}$  for window dimensions 1,50 x 2,20 m and  $U_g = 0,6 \text{ W/m}^2\text{K}$ .
- / Maximum watertightness thanks to coextruded central gasket.
- / Specially designed low threshold for ease of access.





**Alumil**  
SUPREME  
S77 PHOS

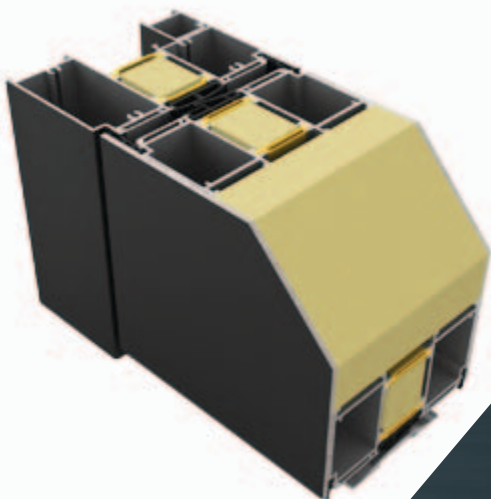




SUPREME SD115 Pivot offers extremely large entrance doors for an exceptional aesthetic result with a pure, minimalistic design and coplanar surfaces. The innovative design of the system and the state-of-the-art equipment, provide the prerequisites for prestigious entrance doors with high aesthetics, exceptional quality and outstanding performance in terms of security, insulation and functionality.

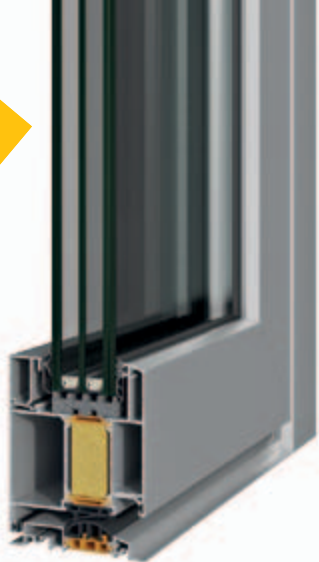
- / Pivot hinge with adjustable pins.
- / Maximum safety with certified burglar resistance RC3.
- / Maximum energy efficiency with high thermal insulation coefficient  $U_d = 0,7 \text{ W/m}^2\text{K}$ .
- / High levels of thermal insulation with special anti-distortion polyamides 34mm, for improved performance in case of high temperature differences between indoors and outdoors.
- / Perimetrical sealing with central gasket and 3 levels of EPDM gaskets.
- / Co-planarity between wall, frame and sash.
- / Easy access with special 7mm low threshold.
- / Integrated recessed external handle.





**Alumil**  
SUPREME  
SD1 15 PIVOT



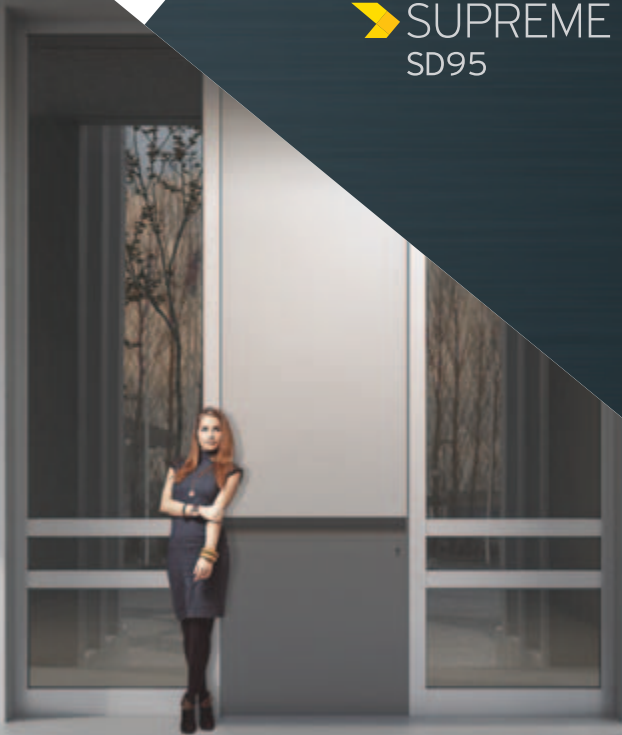


The system SUPREME SD95 belongs to ALUMIL's series for entrance doors with high quality standards. The system includes a complete range of thermal break profiles with flat design for coplanar constructions that offer high functionality. Offering many infill options including aluminium or glass panels, the SD95 meets the most demanding architectural trends and aesthetics.

- / Maximum energy efficiency with high thermal insulation coefficient  $U_d < 1,0 \text{ W/m}^2\text{K}$ .
- / High levels of thermal insulation with special anti-distortion polyamides, for a better operation in case of high temperature differences between indoors and outdoors.
- / Maximum watertightness with special design of central gasket and 3 sealing levels through EPDM gaskets.
- / Wide variety of security locks and hinges (concealed, barrel or surface mounted).
- / Combined perfectly with the casement series SUPREME S91.



**Alumil**  
SUPREME  
SD95





SUPREME SD77 is ALUMIL's system for entrance doors requiring modern design, high performance and emphasis on safety. The system provides the ability to create multiple constructions, combined either with aluminium panels or with glazing infills. Thanks to its modern & flat design it offers elegance and uniformity that enhance the innovative design and aesthetics of the series.

- / Basic system depth 77 mm.
- / Low threshold only 22 mm high, with slip resistant design.
- / High level of thermal insulation and watertightness.
- / Wide variety of security locks and hinges (concealed, barrel or surface mounted).
- / Offers various typologies of entrance doors.
- / Combined perfectly with the casement series SUPREME S77.



**Alumil**  
SUPREME  
SD77







SMARTIA S67 is ALUMIL's brand new Tilt & Turn system for insulated doors and windows with impressive thermal insulation that perfectly combines fabrication flexibility with outstanding design.

- / Basic system depth 67 mm.
- / High thermal insulation with  $U_w=1,18 \text{ W/m}^2\text{K}$  for frame dimensions of 1,50 x 2,20 m and  $U_g=0,60 \text{ W/m}^2\text{K}$ .
- / Available in various designs: flat & curved.
- / Max. glass thickness up to 58 mm and weight per sash up to 180 Kg (with concealed hinges).
- / 3 levels of watertightness with EPDM gaskets.
- / Higher waterproofing level.
- / Certified Burglar Resistance class RC2.
- / Certified by the ift Rosenheim institute.





**Alumil**  
SMARTIA  
S67





SMARTIA S67 PHOS offers modern minimal casements with concealed sash and fittings. This version maximizes the natural light thanks to its significantly reduced visible aluminum face width of only 72 mm. Its remarkable thermal insulation and performance in terms of air permeability, water tightness and resistance against wind load, makes it ideal for demanding projects.

- / Basic system depth 67 mm.
- / High Thermal insulation with  $U_w = 1,30 \text{ W/m}^2\text{K}$ .
- / Only 72 mm visible aluminium face.
- / Available in various designs: flat & curved.
- / Max. glass thickness up to 28 mm for Tilt & Turn sash and 58 mm for fix sash.
- / Weight per sash up to 180 Kg (with concealed hinges).
- / European groove or Euronut hardware can be applied.
- / 3 sealing levels through EPDM gaskets.
- / High waterproofing level.



**Alumil**  
▶ SMARTIA  
S67 PHOS





SMARTIA M1 1000 is an insulated Tilt & Turn system that can meet the most demanding needs thanks to a large variety of solutions and designs.

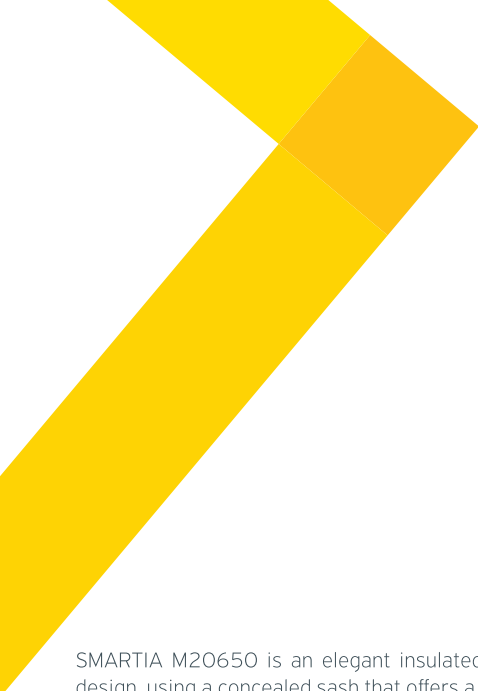
- / Basic system depth 62,5 mm.
- / Sufficient thermal insulation with  $U_w = 1,67 \text{ W/m}^2\text{K}$  for frame dimensions of 1,5 x 2,2 m and  $U_g = 1,0 \text{ W/m}^2\text{K}$ .
- / Option of concealed sash or horizontal pivot windows.
- / Special profiles available for various entrance doors typologies.
- / Various designs: flat, curved, classic.
- / European groove or PVC groove hardware can be applied.
- / Max. glass thickness up to 59 mm and weight per sash up to 180 Kg.
- / Sound proof up to 46 dB certified by the ift Rosenheim institute.
- / Certified by the world renowned institute ift Rosenheim.





**Alumil**  
▶ SMARTIA  
M11000





SMARTIA M20650 is an elegant insulated hinged system with modern design, using a concealed sash that offers a minimal touch to windows and doors. It is an exceptional solution for maximum natural lighting.

- / Basic system depth 59,5 mm.
- / Variable profiles available for concealed sash, Tilt & Turn windows and fix parts.
- / Available in various designs (flat & curved).
- / European groove or Euronut hardware can be applied.
- / Max. glass thickness up to 24 mm and weight per sash up to 180 Kg.
- / Certified by the ift Rosenheim institute.





**Alumil**  
▶ SMARTIA  
M20650







SMARTIA M9660 is an insulated Tilt & Turn system for areas with warmer climate, ensuring high quality constructions and application of various typologies with considerable thermal performance. It is ideal for renovations, combining safety and functionality, without requiring high investment costs.

- / Basic system depth 56 mm.
- / High thermal insulation with  $U_w = 1,56 \text{ W/m}^2\text{K}$  for frame dimensions of 1,5 x 2,2 m and  $U_g = 1,0 \text{ W/m}^2\text{K}$ .
- / Special profiles available for various entrance doors typologies.
- / Available in various designs (flat, curved).
- / European groove or PVC groove hardware can be applied.
- / Max. Glass thickness up to 49 mm and weight per sash up to 180 Kg (with concealed hinges).
- / Sound proof up to 36 dB.
- / Certified burglar resistance RC2.
- / Certified by the ift Rosenheim institute.



**Alumil**  
▶ SMARTIA  
M9660





SMARTIA MD67 is ALUMIL's new system for quality main entrance doors. Distinguished for its modern design and its high performance, the system provides the ability to create entrance doors with panels or glazing infills. The special double-sided coplanar design provides unique entrance doors with an exceptional aesthetic value.

- / Basic depth of system: 67mm.
- / Low threshold of almost 16 mm height with slip-resistant design.
- / High level of thermal insulation up to  $U_f = 1,97 \text{ W/m}^2\text{K}$ .
- / Designed for a vast range of entrance door typologies.
- / Wide variety of security locks and hinges (concealed, barrel or surface mounted).
- / High level of thermal insulation and water tightness.
- / Outstanding insulated panel which is coplanar on both sides, with a width of 67 mm, for exceptional design, advanced thermal insulation and high security levels.





**Alumil**  
SMARTIA  
MD67





SMARTIA MD9660 is the new system of ALUMIL for modern coplanar main entrance doors with high standards and emphasis on safety. The system offers the possibility of realizing cost efficient constructions using either aluminium panels or glazing. The possibility of using an adhesive metal sheet over the entire outer sash, with a coplanar design, provides not only outstanding minimal aesthetics, but also enhanced security.

- / Basic system depth 56 mm.
- / Designed for a vast range of entrance door typologies.
- / Either European groove or Euronut hardware can be applied.
- / Max. glass thickness up to 49mm and weight per sash up to 180 Kg (with concealed hinges).
- / Outstanding coplanar insulated panel of 65 mm width, for advanced thermal insulation and security level.
- / Low threshold of only 15,20 mm height, for easy access to people with special needs.
- / Sound proof up to 36 dB.
- / Certified for burglar resistance RC2.
- / Certified by ift Rosenheim.



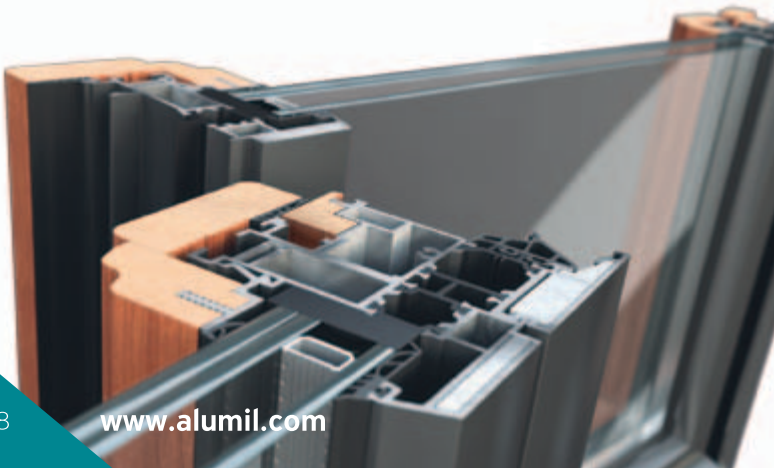
**Alumil**  
SMARTIA  
MD9660





SMARTIA M23000 is an insulated Tilt & Turn system for doors and windows which combines the advantages of aluminium & wood by offering the durability of aluminium along with the warm feeling of wood.

- / Basic system depth 88 mm.
- / Only Euronut hardware is applicable.
- / Max. glass thickness up to 33 mm and weight per sash up to 180 Kg (with concealed hinges).
- / Connection of aluminium and wooden parts via special clips for an effective air circulation.
- / Certified performance by the EKANAL institute.

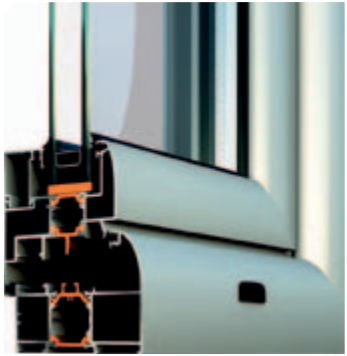




**Alumil**  
SMARTIA  
M23000







COMFORT M20000 is a Tilt & Turn system with thermal break which exclusively cooperates with stainless steel 16 mm hardware. This system offers enhanced thermal insulation and security level.

- / Basic system depth 62,5 mm.
- / Glass reinforced polyamides offer increased thermal insulation with  $U_f$  value from 2,7 up to 3,0  $W/m^2K$ .
- / Glass thickness up to 44 mm and sash weight up to 130 Kg.
- / Thermal insulation with  $U_w = 1,73 W/m^2K$  for frame dimensions of 1,5 x 2,2 m and  $U_g = 1,0 W/m^2K$ .
- / Tilt & Turn 16 mm groove mechanism with multiple security locking points which can be easily installed.



# Alumil

## COMFORT M9400



COMFORT M9400 is one of the most complete non-insulated casement systems which can serve a wide range of different needs with satisfying performance.

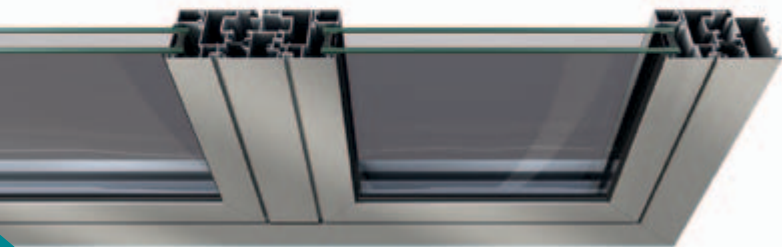
- / Basic system depth 45 mm.
- / Wide variety of designs and construction solutions regarding windows and doors.
- / Special profiles with intensive curved design in order to simulate the appearance of wood effect windows.
- / Wide variety of profiles for typologies with hinged shutters.
- / Glass thickness up to 32 mm and sash weight up to 150 Kg.
- / Can be combined with the sliding system COMFORT M9050.

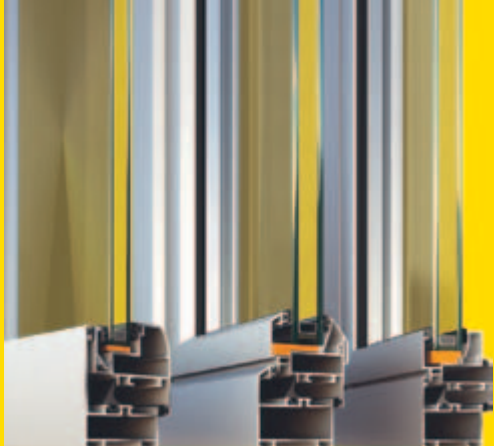




SMARTIA M15000 is a Tilt & Turn system which can meet various needs thanks to a wide range of profiles for windows and doors with the following characteristics:

- / Basic system depth 50 mm.
- / Glass thickness up to 47 mm and sash weight up to 180 Kg (with concealed hinges).
- / Robust & flexible system that can support all potential typologies of doors, windows & pivot windows.
- / Special profiles available for main entrances, smoke proof doors and panic doors.
- / The system supports concealed sash typologies.
- / Various designs (e.g. flat, curved, classic).
- / Flexibility as either European groove or PVC groove hardware can be applied.
- / Certified performance by the ift Rosenheim Institute.





**Alumil**  
SMARTIA  
M15000





# Alumil

## SMARTIA

### M15000 BR



SMARTIA M15000 BR is a burglar resistant hinged system ideal for the creation of high safety entrance doors and safety cages. Some of the system's main attributes are:

- / Construction of sturdy entrance doors.
- / Ideal option for banks and public buildings where the need of security is increased.
- / Easy construction which can be combined with high tech automation mechanisms.
- / Certified performance by ift Rosenheim Institute for burglar resistance of RC2 level.



# Alumil

## SMARTIA

### M15000 RS



SMARTIA M15000 RS is a hinged system suitable for the construction of entrance doors. It has a special smoke proof design preventing smoke or smells to diffuse to specific protected spaces.

- / Application in public spaces, offices, hotels or industrial buildings for safe evacuation in case of fire, isolation of kitchens etc.
- / Available in all entrance typologies, as for example single or double leaf doors with fixed parts, with or without fanlights etc.
- / Robust constructions with impressive dimensions.
- / The system meets the specifications of smoke proof and panic doors.
- / Certified system performance by the ift Rosenheim Institute.



# Alumil

## COMFORT M940



COMFORT M940 is a cost efficient and lightweight non-insulated system for Tilt & Turn casements without compromising on performance. Available in a variety of construction solutions.

- / Basic system depth 37 mm.
- / 3 sealing levels through EPDM gaskets.
- / Wide profile variety for various windows and doors.
- / Can be used in multiple typologies with narrow spans and cost efficient projects.
- / Single glazing with thickness from 10 mm up to 24 mm.
- / The system is compatible with European Groove mechanism.
- / Can be combined with the sliding system COMFORT M900.

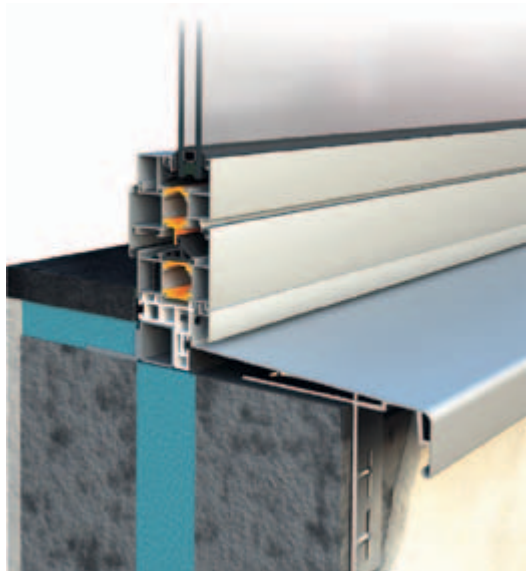


# Alumil

## COMFORT M8800

COMFORT M8800 is a window sills system for rainwater drainage. It enhances watertightness and thermal insulation.

- / Cost efficient solution which can be used as an alternative to wood or marble.
- / Wide size range, from 50 mm to 300 mm.
- / Special support and anti-distortion accessories are available.
- / Insulated and non-insulated profiles.





**Alumil**



## SLIDING WINDOWS & DOORS





System	Thermal Insulation	$U_w = W/m^2K^{****}$		
		2sashes*	2 sashes**	2 sashes***
SUPREME S700	◆	1.17		
SUPREME S650 PHOS	◆	1.03		
SUPREME S650 e-MOTION	◆	1.03		
SMARTIA M630 PHOS	◆	1,35	1,43	1,51
SMARTIA S560	◆	1,21	1,32	
SMARTIA S440	◆		1,43	
SMARTIA S350	◆		1,65	1,76
SMARTIA M23300	◆	1,43	1,51	
SMARTIA M14600			1,88	2,19
SMARTIA M12500 PHOS			1,82	1,98
COMFORT M9200				2,50
COMFORT M9050				2,26
COMFORT M900				2,24

\* Opening dimensions 4,00 m x 2,50 m (width x height)

\*\* Opening dimensions 3,00 m x 2,20 m (width x height)

\*\*\* Opening dimensions 2,20 m x 2,20 m (width x height)

\*\*\*\* Calculations according to:  $\psi=0,035 W/mK$  &  $U_g=1,00 W/m^2K$  ( $U_g=0,60 W/m^2K$  for SUPREME S700, SUPREME S650 PHOS, SUPREME S650 e-Motion and SMARTIA S560)

## TECHNICAL CHARACTERISTICS

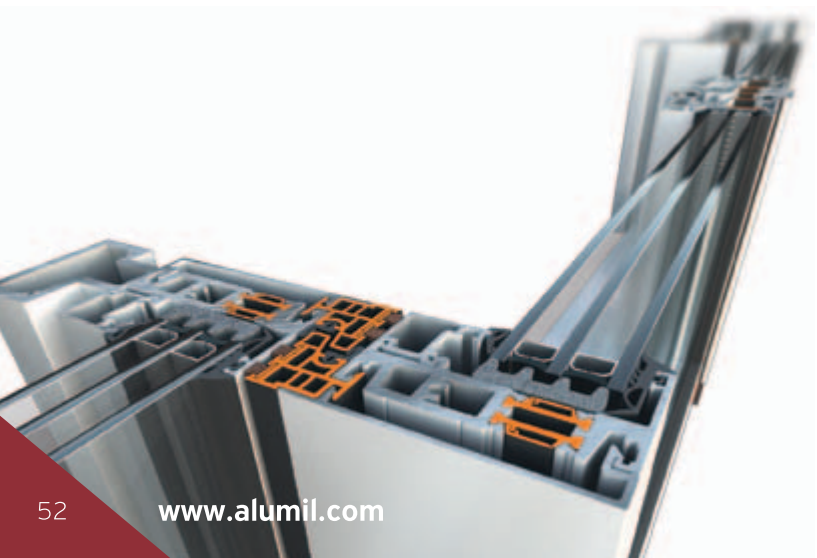


System Depth mm	Max. Sash Weight Kg	Glass Thickness mm	Certification Institute
70	400	up to 50	IFT, EKANAL, ATG, AUTH
62	600	45	IFT
67.4	700	50	IFT
63	250	32	IFT
56	300	up to 44	IFT, AUTH
44	180	up to 32	IFT
35	180	up to 25	IFT, AUTH
74	300	28	
35	180	up to 25	IFT
45	180	up to 32	IFT
38	120	up to 20	EKANAL
32	120	up to 20	EKANAL
28	80	up to 20	



The Lift & Slide system SUPREME S700 represents the new evolution of ALUMIL's advanced systems for projects with wide spans and impressive characteristics. The system complies perfectly with the modern trends of "transparent" architecture, combining high thermal insulation, safety and modern design. Its minimal design and its various innovative characteristics, make it the ideal option for projects requiring wide spans for enhanced daylight, outstanding performance and maximum ease of use.


- / Minimal and innovative design with impressive functionality.
- / Interlocking face width only 47 mm for maximum visibility and reinforced profiles for sashes higher than 3 m.
- / Innovative low threshold for easy access and excellent watertightness.

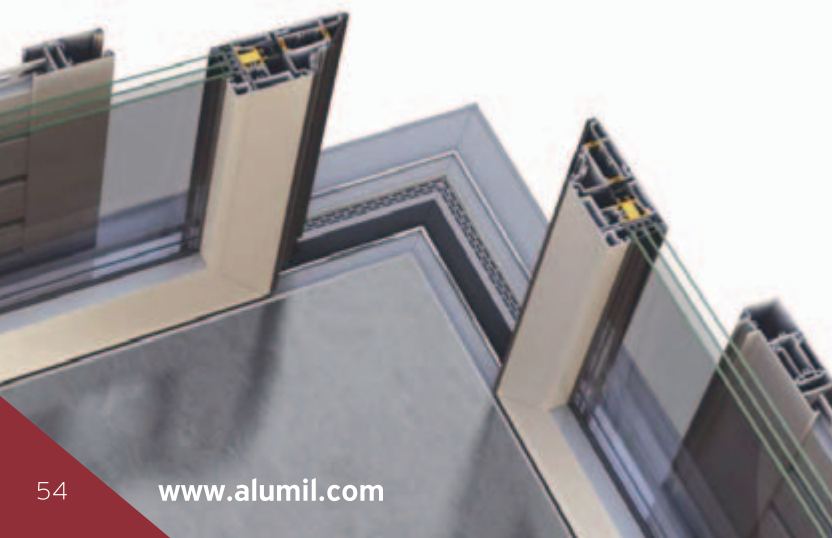


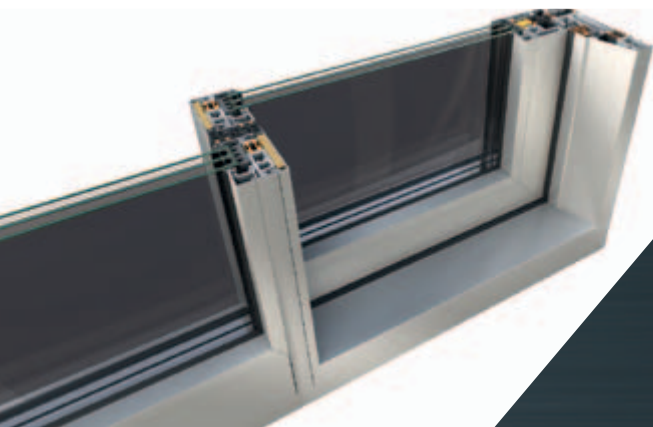


**Alumil**  
SUPREME  
S700



- 
- / Special anti-distortion polyamides, for improved performance when high temperature differences between indoors and outdoors exist.
  - / High thermal insulation with  $U_w=1,17$  W/m<sup>2</sup>K for frame dimensions of 4,0 x 2,5m and  $U_g=0,60$  W/m<sup>2</sup>K.
  - / Smart water drainage with concealed profiles that guarantee watertightness under any weather condition.
  - / A very elegant alternative for automated lift & slide doors is possible.
  - / Certified by the institutes ift Rosenheim and UBATC.





**Alumil**  
SUPREME  
S700

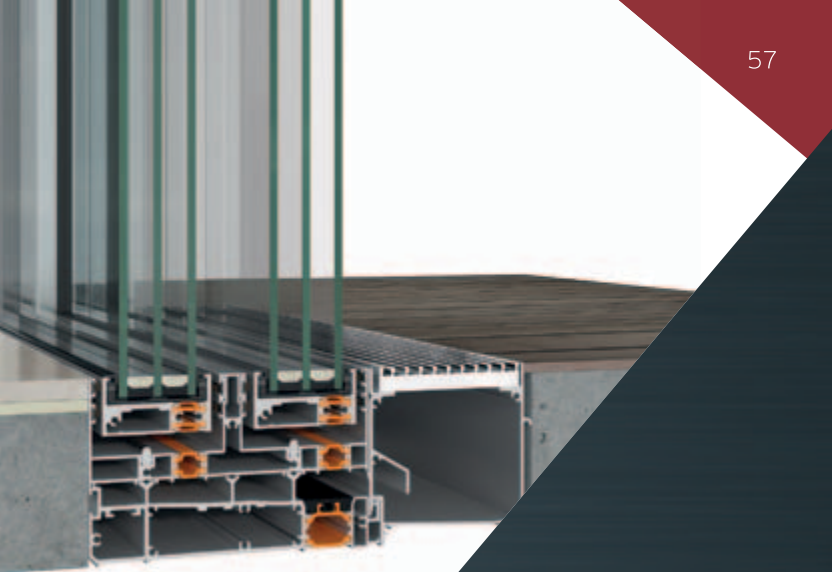






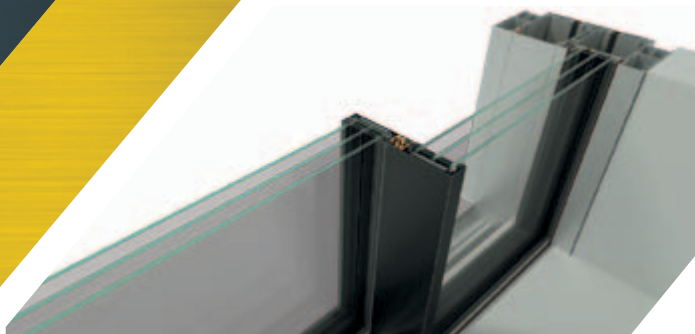
ALUMIL's SUPREME S650 PHOS sliding thermal insulating system is the ideal solution for projects requiring wide spans with minimal aluminium site lines. Massive yet elegant glazing surfaces are achieved while maintaining high functionality, performances and minimal architectural design. The system's main advantage is the improvement of living conditions by maximizing the natural lighting thanks to extremely thin visible aluminium face width, which makes the residents feel closer to the external environment and increases their sense of freedom.

- / All the aluminium profiles are totally concealed in wall so as to maximize natural lighting.
- / Only 25 mm visible aluminium face width at the interlocking profile.
- / Extra concealed profiles available for water drainage.
- / Stainless steel rollers for smooth sliding & maximum functionality with high resistance to corrosion.
- / For all parallel sliding typologies including corner constructions.
- / Special profiles for the implementation of multi-sash typologies.
- / Alternative version for top-mounted installation.
- / High thermal insulation with  $U_w=1,03$  W/m<sup>2</sup>K for frame dimensions of 4,0 x 2,5m and  $U_g=0,60$  W/m<sup>2</sup>K.
- / Certified performance by the ift Rosenheim institute.



**Alumil**  
SUPREME  
S650 PH0S





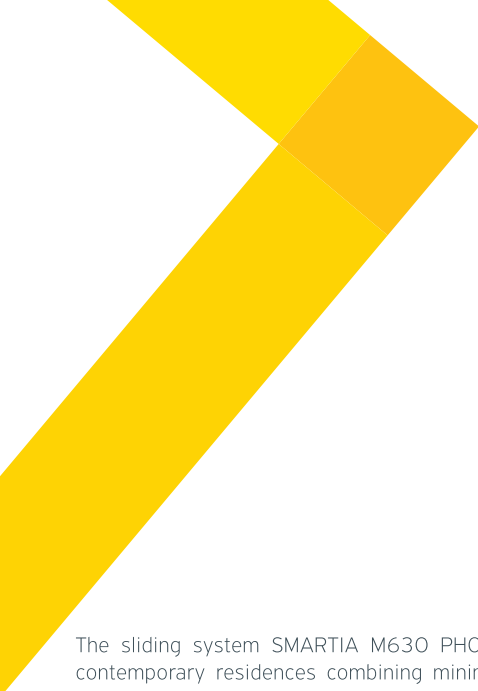
SUPREME S650 e-MOTION is the automated version of the SUPREME S650 PHOS series. The elegant design and the electrical automation offering maximum ease of use, make it the perfect solution for projects that require impressive wide spans with uninterrupted view, as well as perfect comfort.

The innovative design of the system which incorporates a concealed mechanism, ensures smooth sliding with emphasis on safety and functionality.

- / All the aluminum profiles are totally concealed in wall so as to maximize natural lighting.
- / Remote controlled electric motion for ease of use.
- / Maximum safety through a central control system (motion sensors, electromagnetic locking and fire detection), which is compatible with smart house applications.
- / Narrow interlocking profile with only 25 mm visible aluminium face width.
- / Can be operated in case of blackout thanks to the integrated rechargeable battery.
- / Manual operation possible in case of emergency.
- / Extra concealed profiles available for water drainage.
- / High thermal insulation with  $U_w=1,03 \text{ W/m}^2\text{K}$  for frame dimensions of 4,0 x 2,5m and  $U_g=0,60 \text{ W/m}^2\text{K}$ .
- / Certified performance by the ift Rosenheim institute.

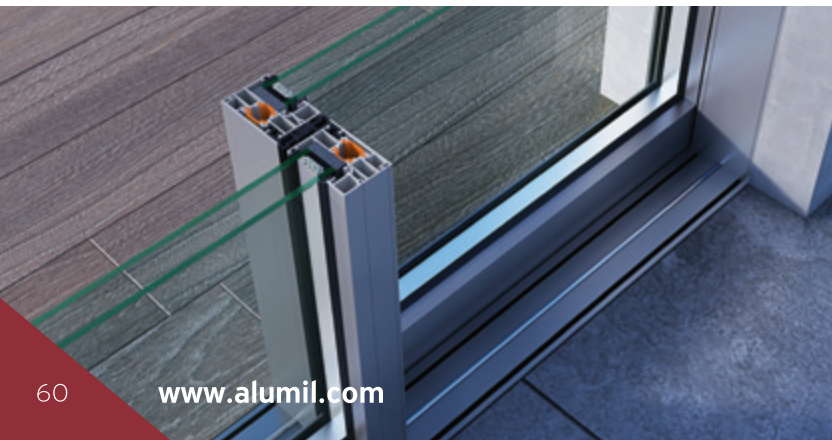


**Alumil**  
SUPREME  
S650 e-MOTION



The sliding system SMARTIA M630 PHOS offers a minimal touch in contemporary residences combining minimal design with high thermal performance. Following the “less is more” philosophy, all aluminium profiles can be hidden into the walls providing a total sense of comfort with top functionality and enhanced safety.

- / High thermal insulation with  $U_w = 1,43 \text{ W/m}^2\text{K}$  for a double sash typology 3,00 x 2,20 m and  $U_g = 1,0 \text{ W/m}^2\text{K}$ .
- / Maximum natural light with only 44 mm of visible aluminium face width at the interlocking profile.
- / Easy access thanks to the low threshold ideal for children, elders and people with special needs.
- / Smooth sliding & maximum functionality with high resistance to corrosion with stainless steel rollers.
- / Vast range of typologies available.
- / Certified performance by the ift Rosenheim institute.





**Alumil**  
SMARTIA  
M630 PHOS





SMARTIA S560 is a remarkably flexible and robust thermally insulated system for Lift & Sliding and regular sliding doors, that uses the same profiles for both kind of frames.

- / Basic system depth 56 mm.
- / High thermal insulation with  $U_w = 1,21 \text{ W/m}^2\text{K}$  for frame dimensions of  $4,0 \times 2,5 \text{ m}$  and  $U_g = 0,60 \text{ W/m}^2\text{K}$ .
- / Minimum visible interlock width of only 49 mm so as to maximize natural lighting.





**Alumil**  
SMARTIA  
S560

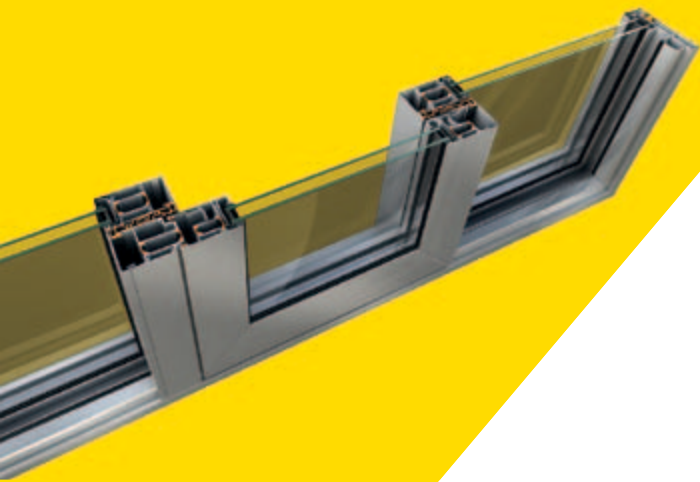






- / Max glass thickness up to 44 mm and weight per sash from 90 Kg up to 300 Kg.
- / Smooth and easy sliding thanks to inox rails.
- / Vast range of typologies available.
- / New low threshold for Lift & Slide and sliding doors.
- / Certified performance by the ift Rosenheim institute.





**Alumil**  
▶ SMARTIA  
S560





SMARTIA S440 is an innovative insulated sliding system which incorporates all the modern architectural trends and the requirements for high energy-efficiency. It is an ideal option for the very demanding European market as well as for very elegant constructions.

- / Basic system depth 44 mm.
- / High thermal insulation with  $U_w = 1,43 \text{ W/m}^2\text{K}$  for frame dimensions of  $3,0 \times 2,2 \text{ m}$  and  $U_g = 1,0 \text{ W/m}^2\text{K}$ .
- / Sash height of only 75 mm so as to maximize natural lighting.
- / Visible interlock width of only 39 mm so as to maximize visibility.
- / Meeting stile width of only 64 mm, including an integrated ergonomic handle.
- / Increased safety thanks to the concealed locking points.
- / Smooth and easy gliding thanks to anodized rails.
- / Two sashes available for  $45^\circ$  or  $90^\circ$  cuts.
- / Max. glass thickness up to 32 mm and sash weight up to 180 Kg.
- / Certified by the ift Rosenheim institute.





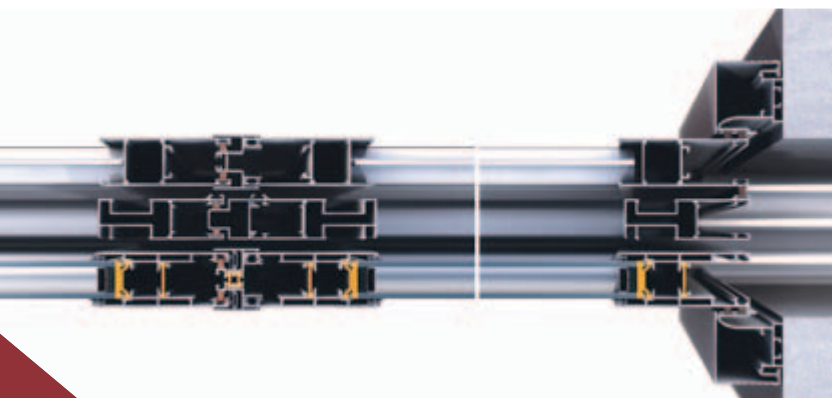
**Alumil**  
SMARTIA  
S440





SMARTIA S350 is a modern & flexible insulated sliding system with a modern flat design. It is ideal for refurbishments or renovations thanks to its construction easiness.

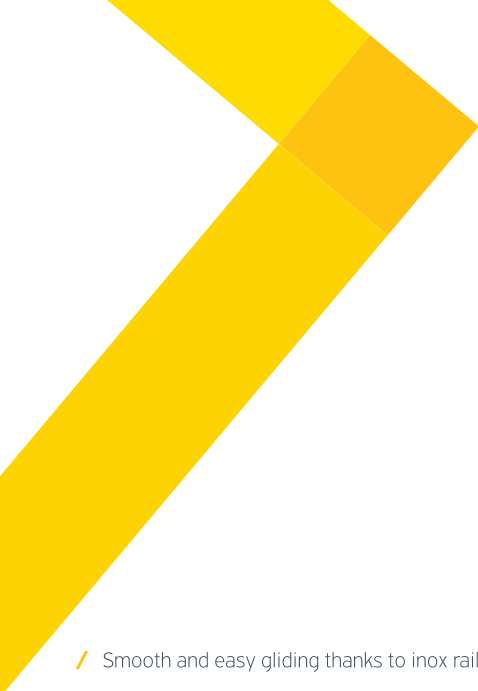
- / Basic system depth 35 mm.
- / High thermal insulation with  $U_w = 1,65 \text{ W/m}^2\text{K}$  for frame dimensions of  $3,0 \times 2,2 \text{ m}$  and  $U_g = 1,0 \text{ W/m}^2\text{K}$ .
- / Minimum visible interlock width of only 50 mm, so as to maximize visibility and natural lighting.

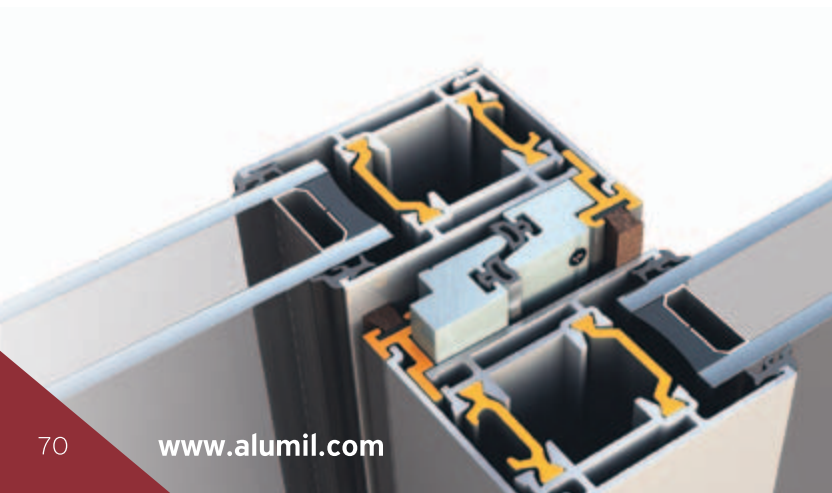


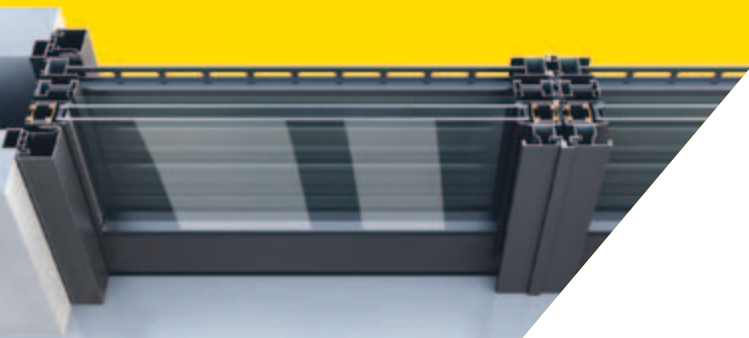


**Alumil**  
SMARTIA  
S350



- 
- / Smooth and easy gliding thanks to inox rails.
  - / Special sash with anti-distortion polyamides ideal for dark frames.
  - / Special sash with anti-distortion polyamides ideal for dark frames in order to avoid the thermal distortion.
  - / Vast range of typologies compatible with various mechanisms.
  - / Max. glass thickness up to 24 mm and weight per sash up to 180 Kg.
  - / Certified performance by ift Rosenheim.





**Alumil**  
SMARTIA  
S350







SMARTIA M23300 is an insulated Lift & Slide system for elegant windows and doors, combining the advantages of aluminium with the warmth of natural wood.

- / Basic system depth 73,5 mm.
- / High thermal insulation with  $U_w = 1,43 \text{ W/m}^2\text{K}$  for frame dimensions of 4,0 x 2,5 m and  $U_g = 1,0 \text{ W/m}^2\text{K}$ .
- / Max. glass thickness up to 28 mm and weight per sash up to 300 Kg.
- / Smooth and easy gliding thanks to inox rails.
- / Connection between aluminium & wooden parts via special clips for effective air circulation.



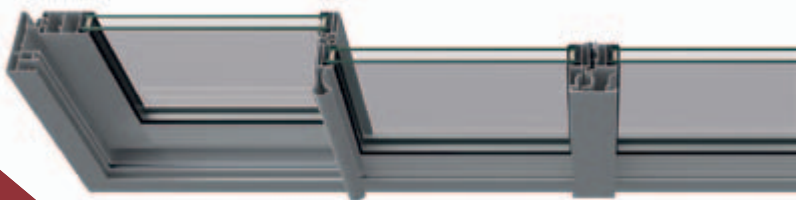
**Alumil**  
SMARTIA  
M23300

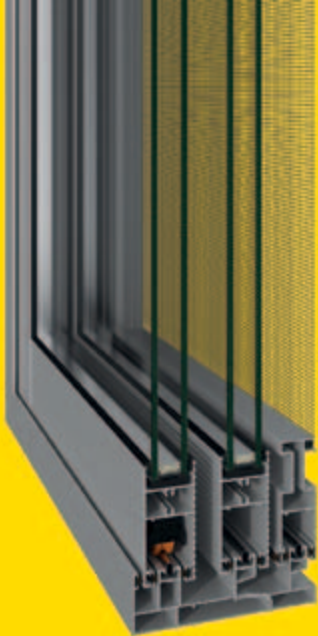




SMARTIA M14600 is ALUMIL's brand new sliding system with extremely elegant lines, incorporating all the expertise of ALUMIL Group. It meets the modern architectural trends and the requirements for especially high performances and is the ideal solution for areas with warmer climates.

- / Basic system depth 35 mm.
- / Significant thermal insulation even without thermal break with  $U_w = 1,88 \text{ W/m}^2\text{K}$  for frame dimensions of 3,0 x 2,2 m and  $U_g = 1,0 \text{ W/m}^2\text{K}$ .
- / Minimum visible interlock width of only 23 mm so as to maximize visibility and natural lighting.
- / Special interlocking profile with integrated handle for functionality and significant wind load resistance (optional).
- / Sash profiles available for 45° and 90° assembling.
- / Meeting stile width of only 62 mm.
- / Vast range of typologies compatible with various mechanisms.
- / Max. glass thickness up to 25 mm and weight per sash up to 180 Kg.
- / Smooth and easy sliding thanks to inox rails.
- / Certified performance by the ift Rosenheim institute.





**Alumil**  
▶ SMARTIA  
M14600





SMARTIA M1 2500 PHOS is the new ingenious sliding system of ALUMIL for minimal sliding frames, which maximize natural lighting. Its unique design is completely in line with the latest architectural trends.

- / Basic system depth 45 mm.
- / Significant thermal insulation, even without thermal break,  $U_w = 1,82 \text{ W/m}^2\text{K}$  for frame dimensions of 3,0 x 2,2 m and  $U_g = 1,0 \text{ W/m}^2\text{K}$ .
- / Minimal design with concealed narrow sash and interlocking profile of only 32 mm for maximum natural lighting.
- / Sash profiles available for 45° and 90° assembling.
- / Meeting stile width of only 72 mm including an integrated ergonomic handle.
- / Max. glass thickness up to 32 mm and weight per sash up to 180 Kg.
- / Smooth and easy gliding thanks to inox rails.
- / Certified by ift Rosenheim.





**Alumil**  
SMARTIA  
M12500 PHOS





COMFORT M9200 is a non-insulated sliding system with curved shape.

- / Sash width 38 mm.
- / Supports single or double glazing up to 20 mm thickness and sash weight up to 120 Kg.
- / Suitable for any typology of sliding doors and windows, combined also with sliding shutters or/and fly screens.
- / Stainless steel rails offering smooth and easy sliding are available.
- / Two points locking hardware for a higher security level.





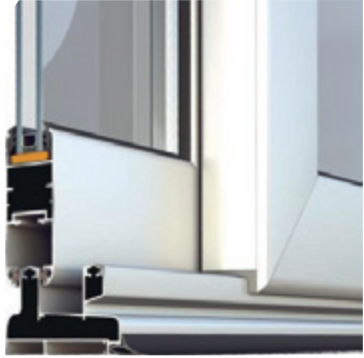
**Alumil**  
COMFORT  
M9200





# Alumil

## COMFORT M9050



COMFORT M9050 is a non-insulated sliding aluminium system whose main characteristics are the low weight and the curved shape of the profiles.

- / Sash width 32 mm.
- / Different designs and typologies available.
- / Optional stainless steel rails offering smooth and easy gliding of the sashes.
- / Sash profile with embodied handle also available.
- / Supports single or double glazing up to 20 mm thickness and sash weight up to 120 Kg.
- / The system can be combined with the casement system COMFORT M9400.



# Alumil

## COMFORT M900



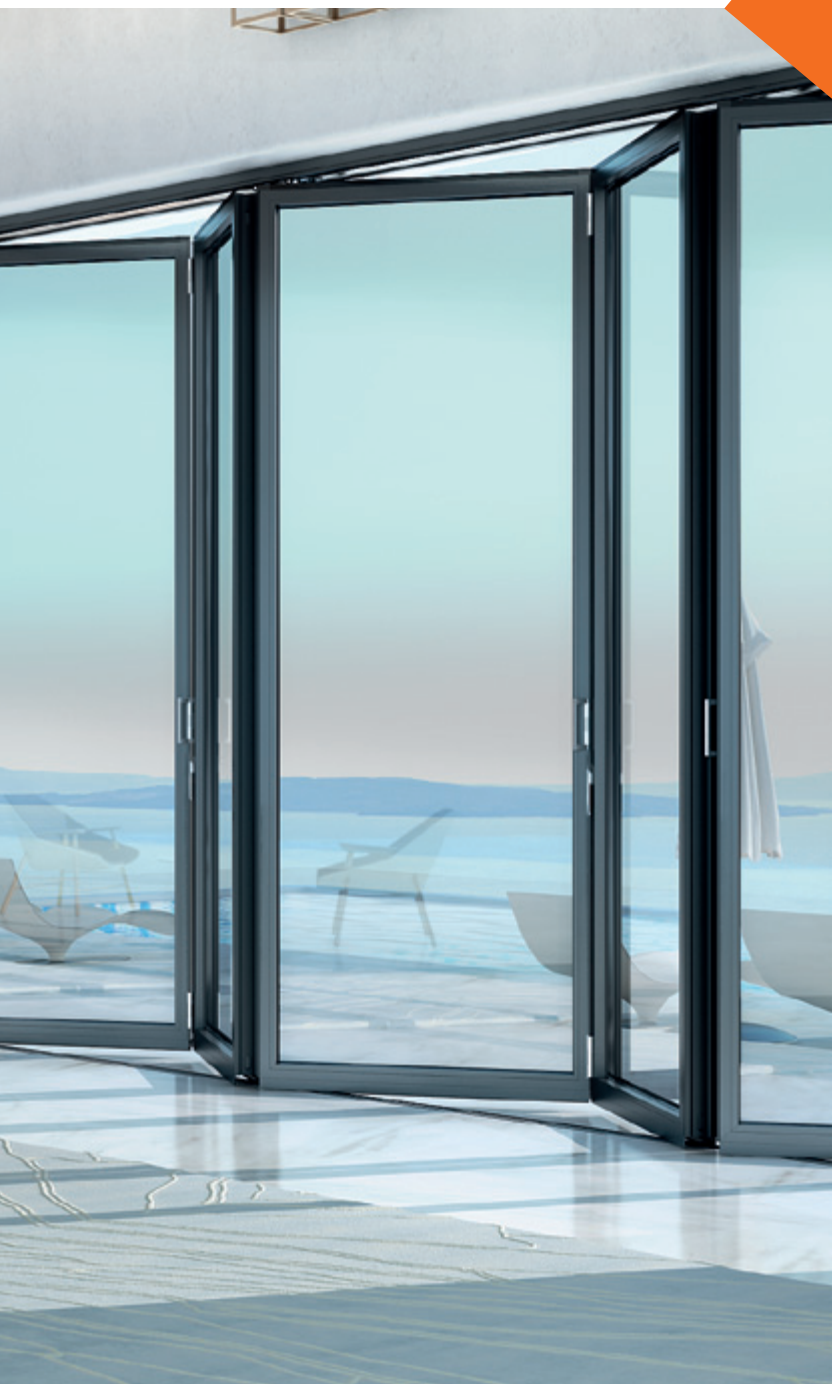
COMFORT M900 is the lightest sliding system for highly cost efficient constructions. Ideal proposal for low-cost solutions without compromises in quality.

- / Sash width 28 mm.
- / Supports single or double glazing up to 20 mm thickness and max. sash weight up to 120 Kg.
- / Recommended for small to medium size spans.
- / Cooperates perfectly with the system COMFORT M940 for Tilt & Turn typologies.





## BI-FOLDING DOORS





SUPREME SF85 is an exceptional folding door system, providing minimal aesthetics, outstanding thermal insulation and the ability to create constructions with very large dimensions and extraordinary low sight lines. Its state-of-the-art fittings have been specially designed to achieve unparalleled performance and a smooth, bottom-slide, operation.

Ideal for flawless residential use, as well as for heavy-duty constructions and high-end applications. Its construction flexibility (i.e. odd and even number of vents, corner typologies and semi-structural versions), provides numerous solutions, meeting every need in a very effective and elegant way.

- / Extremely reduced sight lines offering an excellent minimal design (105 mm sash to sash).
- / Very large dimensions are possible in terms of maximum height (up to 4 m), sash width (up to 1.5m per sash) and total construction length (infinite).
- / Outstanding thermal insulation for maximum energy savings with  $U_w$  down to 1,2 W/m<sup>2</sup>K.
- / Extreme performance in terms of water tightness, air permeability and wind load resistance.
- / Enhanced safety and anti-burglary protection, with quadruple locking latches and anti-lift roller hinges (RC2).
- / Ultra-smooth and long-lasting operation.



**Alumil**  
SUPREME  
SF85



# Alumil

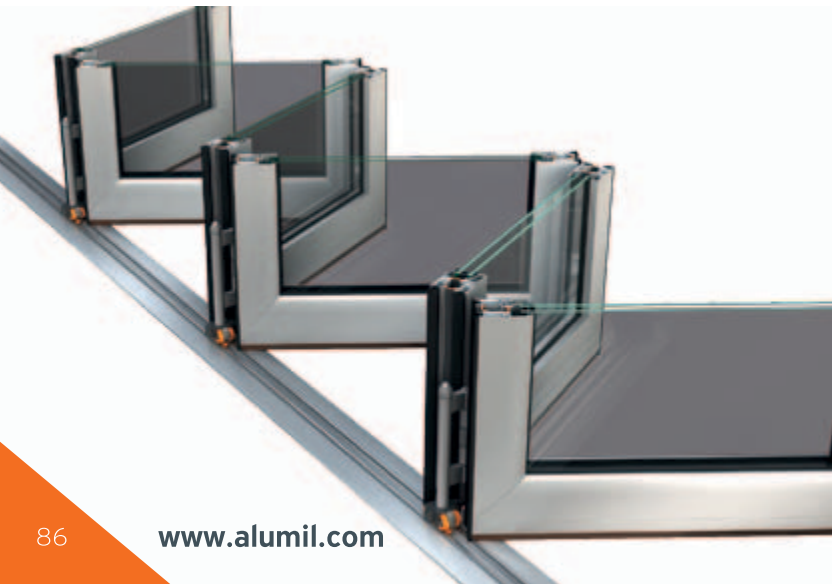
## SMARTIA

### M19800



SMARTIA M19800 is an insulating system for folding doors with 50 mm sash thickness.

- / The vent is supported on the top part of the guide (top-hung typology).
- / Rolling hinges with heavy-duty rolls (125 Kg per sash).
- / Various guide profiles either in-floor or on-floor.
- / Last vent may be used as an entrance door (inwards/outwards).

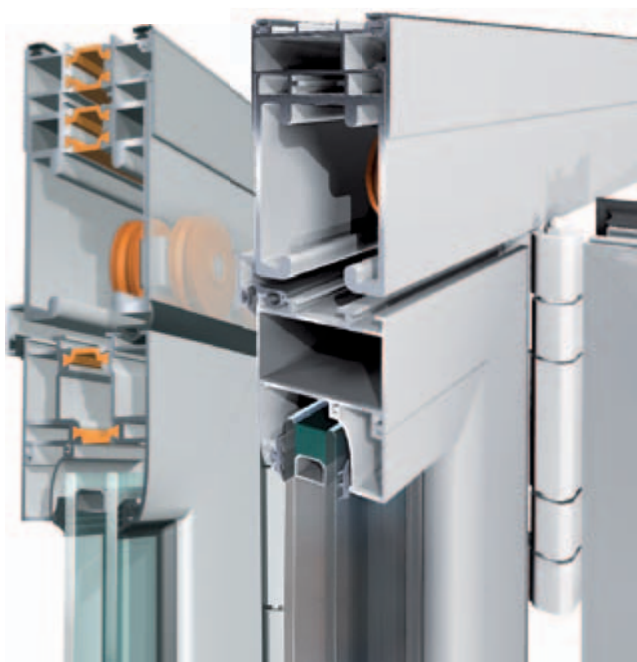


# Alumil

## SMARTIA M9800



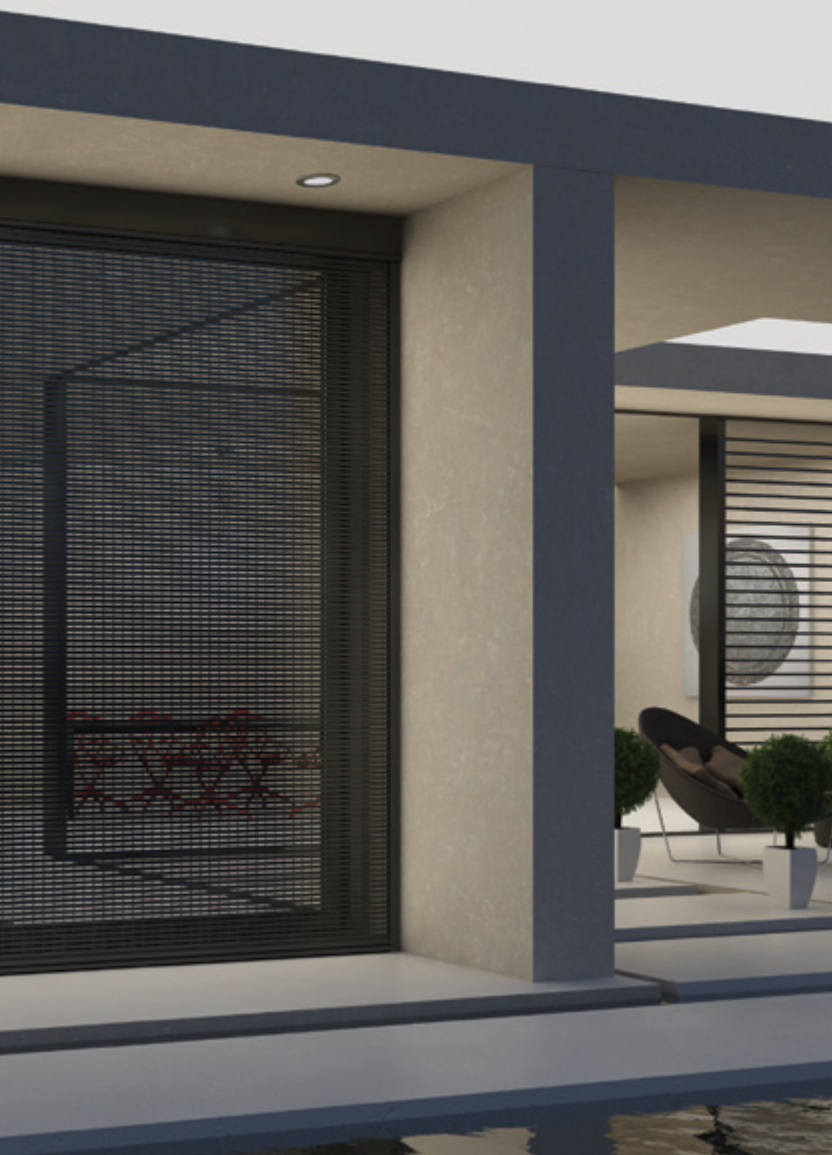
SMARTIA M9800 is ALUMIL's low cost solution for folding doors of high quality by ALUMIL. It is the non-thermal insulating version of M19800.







## SHADING & SAFETY





SMARTIA M5600 is ALUMIL's system for elliptical louvers offering the ability to control shading, i.e. natural lighting, of buildings.

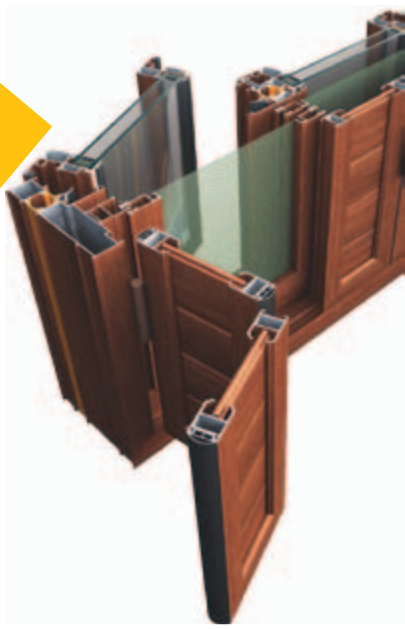
- / Louvers in various widths, fixed or rotating, composite or unified, for horizontal or vertical placement.
- / Can be combined with all curtain wall systems of ALUMIL.
- / Wide range of special profiles for ventilation use in poorly ventilated rooms as garages, engine rooms, warehouses etc.
- / The louver width ranges from 100 to 800 mm.





**Alumil**  
SMARTIA  
M5600

The logo features the brand name 'Alumil' in a bold, black, sans-serif font. A yellow chevron symbol is positioned to the left of the word 'SMARTIA', which is in a smaller, black, sans-serif font. Below 'SMARTIA' is the model number 'M5600' in the same font and size. The background of the page is a composite of a bright yellow upper section and a photograph of a modern building's facade with a complex, layered metal canopy structure.



Large variety of hinged shutters, for all possible typologies in traditional and modern look.

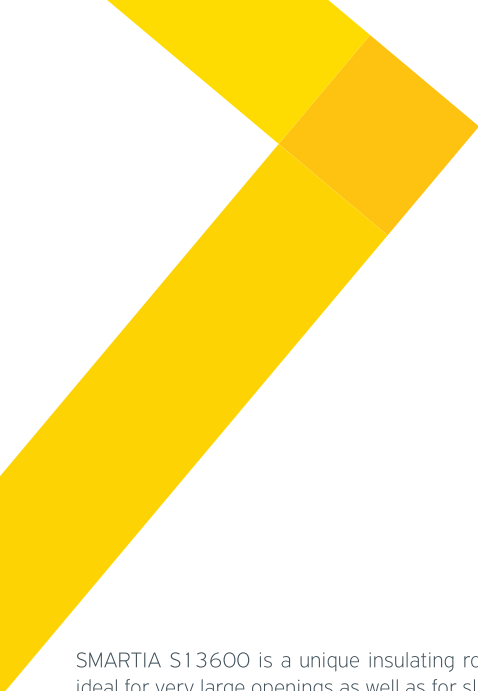
- / SMARTIA M9300 series with a wide variety of solutions, various sashes and frames either independent, unified or divided.
- / Special system SMARTIA M5300, with its own independent frame and concealed hinges.
- / Special solution by placing the shutter inside the frame, especially for traditional buildings and settlements (e.g. typical “Mani” style in Peloponnese).
- / Plugging decorative profiles around the shutter blinds simulating the appearance of traditional wooden shutters (SMARTIA M9300 series).
- / Big variety of profile blinds to fill the shutter panels depending on the customer’s taste and requirements.





**Alumil**  
SMARTIA  
Shutters





SMARTIA S13600 is a unique insulating rolling shutter box (26x32 cm), ideal for very large openings as well as for sliding systems with wide tracks, such as SUPREME S700.

- / Double glass-reinforced polyamide 38 mm and high thermal insulation  $U_{sb} \sim 1 \text{ W/m}^2\text{K}$ .
- / Increased sound insulation  $>40\text{dB}$ .
- / Chambered profiles for high levels of sturdiness and anti-burglar protection.
- / Mounted on frames with up to 270 mm width.
- / Maximum construction height over 3,5 m.
- / Special type entry guides with roller and inox pin.





**Alumil**  
SMARTIA  
S13600





# Alumil

## SMARTIA

### M13700

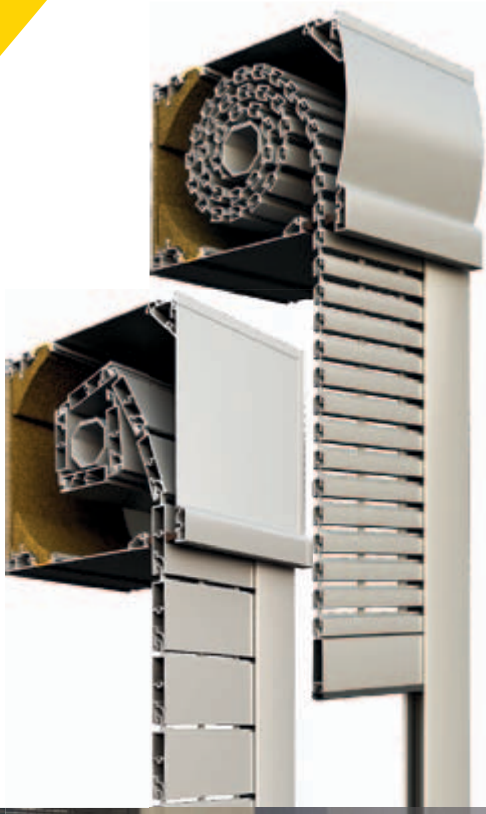


SMARTIA M13700 & SMARTIA M13800 are the new generation of energy rolling shutter boxes, top-mounted, with or without insulation, featuring high aesthetics and anti-burglar protection.

- / Reinforced and multi-chambered profiles for enhanced sturdiness.
- / Smooth operation with emphasis on the reduction of metal noise and vibration.
- / Ideal for covering large openings.
- / Available in straight and curved lines.
- / Insulating version for high energy efficiency with  $U_{sb} \sim 2 \text{ W/m}^2\text{K}$ .
- / Available In 3 key dimensions (14,5x19, 18,5x19, 22x22 cm).

# Alumil

SMARTIA  
M13800





Rolling shutter system for external on-wall installation, suitable for window replacements, without reducing the total height of doors and windows.


- / Curved design for aerodynamics improvement.
- / Option of integrated fly-screen.
- / Two basic dimensions (14x14 and 18x18 cm).





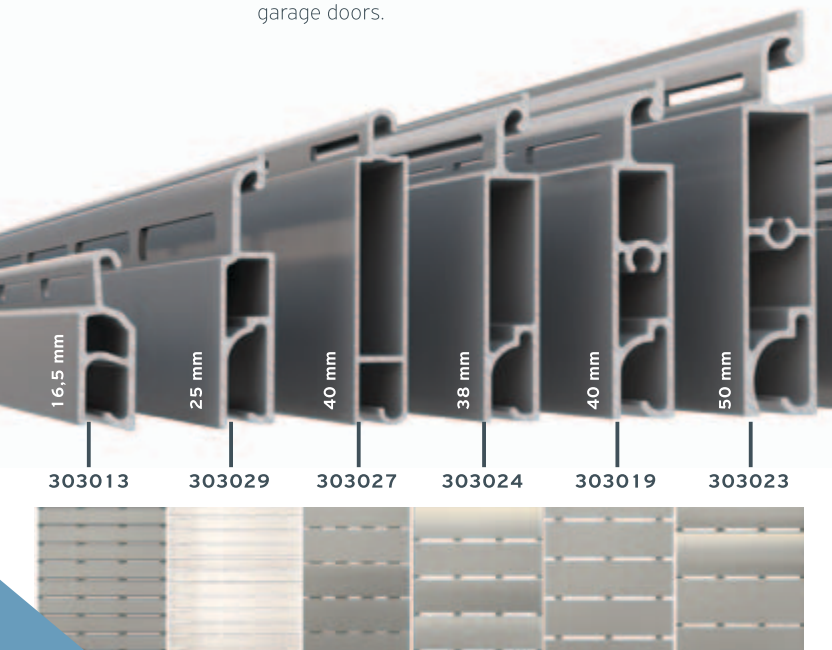
**Alumil**  
COMFORT  
M13500





A wide variety of extruded slats is available, all completely compatible with the various rolling shutter boxes of the market. Proper operation, top anti-burglar protection, ideal for large openings while maintaining excellent aesthetics and design. Depending on the specific requirements, many different slats are available:

- / Specially perforated slats offer outward visibility, interior lighting and effective natural ventilation.
- / Curved slats achieve a classic look.
- / Flat slats are utilized for more minimal design and a more rigid shutter.
- / Large slats are used for very large openings and garage doors.



**Alumil**  
SMARTIA  
Rolling  
Shutter Slats

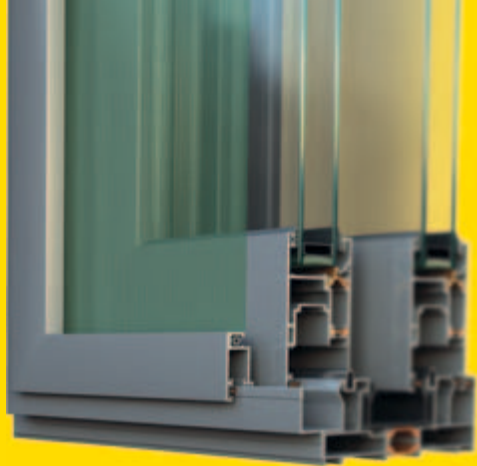




Insect screen protection system with aluminium frame and solutions for every need (fixed, opening, sliding, top-hung).

- / Easy and fast installation.
- / Can be applied to all ALUMIL series and market systems.
- / Mountable on frames of various materials (plastic, wood) and design (straight, curved).
- / Additional flexibility for fabricators thanks to the use of light profiles which are compatible with all ALUMIL series.





**Alumil**  
▶ SMARTIA  
M850







Polycarbonate sheets for various applications including atriums, sun roofs, skylights, interior partitions, windows, greenhouses, sliding roofs and noise barriers.

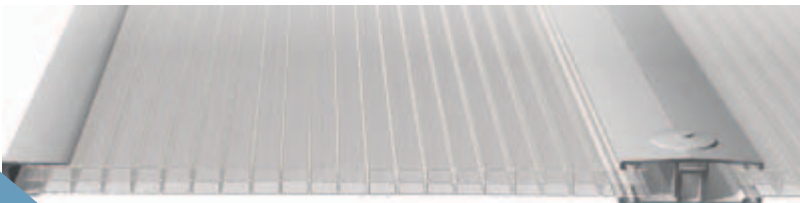
- / Available in two basic types (chambered and solid) in various thicknesses, colors and number of chambers.
- / Superior attributes in contrast to other traditional materials, such as glass.
- / Lightweight, flexible, hardly breakable, insulated, light transparent, soundproof and UV protection.
- / Do not allow the diffusion of fire and smoke.
- / Easily cleaned since dust can hardly settle and accumulate on them.
- / Available in various standard and customized dimensions.

### **Chambered**

Thickness: 4, 6, 8, 10, 16, 20, 25, 32, 40 mm.  
Colour: white, transparent, bronze, green, blue.

### **Solid**

Sheet thickness: 2, 3, 4, 5, 6, 8, 10 mm.  
Colour: opal, transparent, bronze.





**Alumil**  
▶ SMARTIA  
Polycarbonate  
Sheets



## INTERIOR DOORS



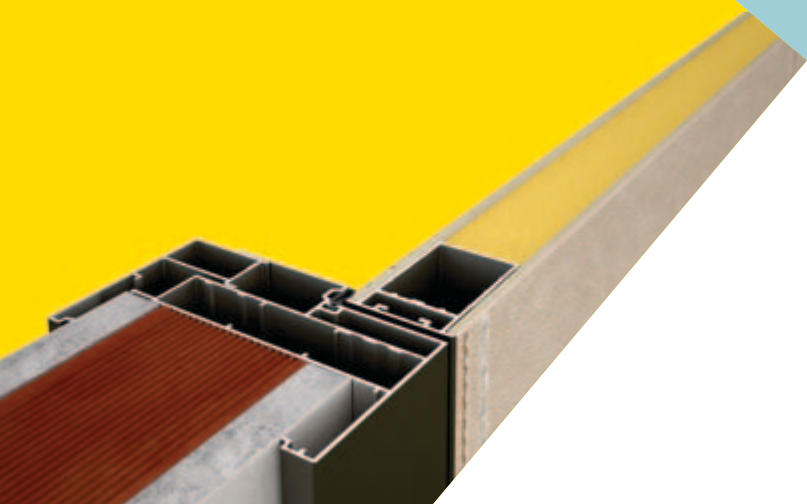


EXCLUSIVE series is an interior doors series offering flexibility in architectural design and flawless functionality.

The technologically advanced aluminium frame of the leaf itself may receive double structural glazing or carbon fiber sheet, among a variety of other materials, meeting admittedly any aesthetic requirement.

- / Available concealed hinges.
- / Combined with magnetic lock.
- / Structural leaf for various materials and surface finishes.
- / EXCLUSIVE doors may reach heights up to 3 meters





**Alumil**  
SMARTIA  
EXCLUSIVE 300





SUITE 150 interior hinged doors offer simplicity and co-planarity, allowing their integration into the wall structure, either color wise or by applying wallpapers and other techniques.

SUITE 150 doors constitute a unique architectural tool, which adopts each inspiration and provides amazing possibilities in contemporary interior design, reaching a height of up to 3 m.

- / Co-planarity regardless the opening direction.
- / All elements are concealed and built in the wall.
- / Completely invisible hinges.
- / Combined with magnetic lock.





**Alumil**  
SMARTIA  
SUITE 150







Series of interior hinged doors with modern linear design, which can be combined with numerous materials, colors, designs and surface finishes. The dividable aluminium frame allows easy installation in any type of wall.

- / Adjustable aluminium frame which embraces the wall.
- / Wooden panels with flat side can be integrated.
- / Available special hinges slightly visible at the top and bottom.
- / Ideal for offices, hotels, residences.



# Alumil

## SMARTIA LINEAR Vetro



Glass interior hinged doors which demonstrate an eclectic and contemporary design in modern residential, office and commercial buildings.

Ideally combined with glass modern glass panel designs that can be either transparent or colorful, simple or with various patterns and digital printed images, according to the customer's aesthetic taste.

Moreover, the door system can be combined with outstanding equipment-accessories in terms of design and quality.





## OUTDOOR SOLUTIONS





Our innovation and experience, always in accordance with top quality and reliability standards, has led to a great variety of functional pergola solutions of high aesthetics that meet all needs.

ALUMIL bioclimatic pergolas literally extend your indoor space, converting it into a new living room which can be used all year round.

## Unparalleled benefits

- / Efficient protection against sunlight, rain, snow, frost and other weather conditions.
- / A bioclimatic structure integrated with side elements, such as glass sliding panels, shading ZIP screens, LED lighting and sliding shutters.
- / Extremely robust construction, which allows very wide dimensions up to 7,5 x 7,5 m.
- / State-of-the-art fittings and fully compatible automation systems.
- / Real seaside-class surface treatment thanks to the pre-anodising process.

## Extra equipment

- / Additional shading with special vertically rolling fabric ZIP-screens, or with top-hung aluminium sliding shutters.
- / Integrated glass sliding system, creating pleasant spaces full of natural light, with controllable environmental conditions.
- / Dimmable LED lights applied on transoms and louvers, providing sufficient and stylish lighting at night.
- / Infra-red heating, as well as sound devices transform the place into a comfortable lounge.



**Alumil**  
▶ **SMARTIA**  
Bioclimatic  
Pergolas

# Alumil

## SMARTIA

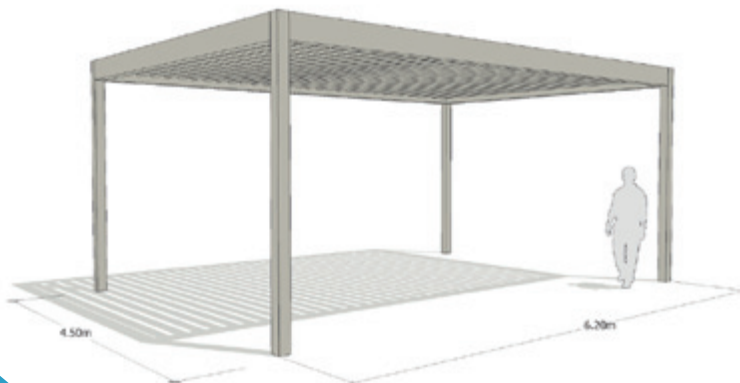
### PG 120P

### Mykonos



The MYKONOS model is more than a classic choice for controlled solar shading and total rain protection. Apart from exceptional functionality, the model is characterized by absolute minimalism and top sturdiness, offering elegant and quite large structures up to 6,2 x 4,5 m or 6,5 x 4,2 m in the free-standing version.

Simultaneously, the model embraces the bioclimatic philosophy, transforming an open-air space into a cozy and enjoyable place to live. The optional bicolor combinations offer a captivating design.



# Alumil

## SMARTIA

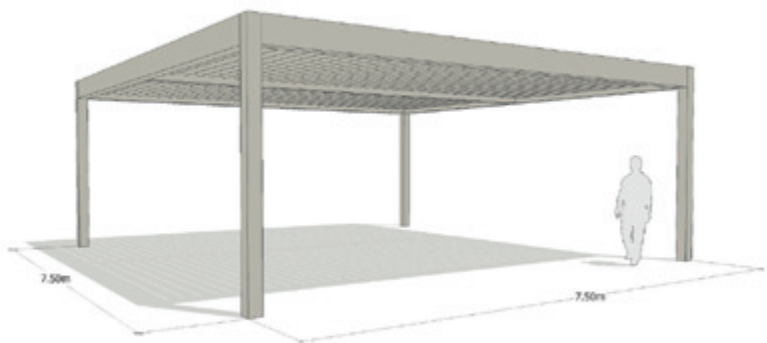
### PG 160P

#### Santorini



The SANTORINI model offers extreme robustness and constructions of enormous dimensions up to 7,5 x 7,5 m, rendering it a superb system beyond the ordinary. Very large spaces are literally converted into functional and relaxing oases. In residential use, a yard area of 50 m<sup>2</sup> can be converted into an extraordinary living space, with regulated shading and ventilation for maximum wellbeing.

In the case of hotels, restaurants and commercial spaces, multiple structures can cover and efficiently protect large areas with much fewer posts.







CORFU

A complete system of fixed pergolas for effective shading and aesthetic upgrading of the surrounding environment. Available in three (3) exceptional models, it offers ideal solutions for modern or traditional residences, hotels, dining and recreation areas.

Fixed pergolas can be combined with the bioclimatic pergolas. Moreover, vertical ZIP-screens, horizontal shading fabrics, polycarbonate and glass panels, spotlights and speakers, reeds etc., can be integrated offering upgraded attributes.

- / Very clean lines with no visible connection points for a totally minimal effect.
- / Extreme robustness to resist intense wind turbulence and allow very large dimensions (4,8 x 6,0 m).
- / Top quality surface coating and anodising for outstanding durability, especially at seaside areas.
- / Amazingly easy fabrication and installation.



NAXOS

**Alumil**  
SMARTIA  
PG 1 20F Fixed



CRETA



WOODEE is ALUMIL's proposal for top quality synthetic decking, offered in a wide variety of solutions, i.e. five (5) different wood surfaces in various widths and in (9) different colors.

Its specific composition maintains the scent and the advantages of natural wood, whilst providing various top attributes, such as low thermal expansion, low moisture absorption, high mechanical strength, easy maintenance, environmental friendliness and much more. Thus, WOODEE is accompanied by a 25-year warranty.

Moreover, the bars may overlap so as to avoid the existence of gaps. In addition, the system also offers solutions for wall cladding and fencing.

- / Highly durable with 25-year warranty.
- / Absolute scent of wood.
- / Extreme resistance against the weathering effects, wood parasites, chlorine and salty water.
- / Solid and extremely robust.
- / Top anti-distortion attributes.
- / Walk barefoot without any burning, slipping or splinters issues.
- / Almost no need for maintenance.
- / Environmentally friendly.





**Alumil**  
**WOODEE**



WOOPEE is a top-quality wood composite product with hollow profiles, which has almost the same recipe as WOODEE, i.e. 60% wood and 40% polyethylene and is ideal for decking, fencing and cladding applications. It can be applied for outdoor use in hotels, restaurants, commercial spaces and residences, offering high aesthetics and extreme durability.

- / Real sense of wood.
- / Hollow and sturdy profiles.
- / Top resistance against weathering effects.
- / Top resistance against wood parasites, chlorine and salty water, ideal for coastal and pool structures.
- / Almost no maintenance and no need for painting, oiling or waterproofing.
- / Environmentally friendly.

### **Great variety of solutions**

- / Decking, fencing and cladding applications.
- / Normal and enhanced profile thickness.
- / Smooth and rough surface.
- / Five (5) colors and more to come.



**Alumil**  
**WOOPEE**



Aluminium fencing system with horizontal louvers attached on the mullion at one or both sides. Characterized by continuous and minimal lines, SMARTIA FC50 fencing offers sturdy and elegant solutions, providing privacy and strong wind load resistance.

- / Elegant design with minimal aesthetics.
- / Wide variety of solutions that meets all needs.
- / Enhanced robustness to resist high wind loads, allowing large dimensions.



# Alumil

## SMARTIA FC80



SMARTIA FC80 is a complete fencing system with louvers placed between the posts (inlaid), offering a great variety of stylish and robust solutions. The available double-vent opening gate with special heavy-duty hinges can reach 6,0 m width, allowing vehicles to pass through.

Everything has been designed with emphasis on detail. The possible combinations of aluminium bars with other materials, such as aluminium panels and composite wood boards (e.g. WOODEE or WOOPEE), offer exceptional decorative results.

- / Elegant design with minimal aesthetics and no visible fixing points.
- / Rust-free materials and minimum maintenance required.
- / Combined with aluminium panels of various designs, plain or perforated.
- / Compatible with WOODEE & WOOPEE fencing boards.
- / Enhanced robustness to resist high wind loads and allow very large dimensions.
- / Hinged gates which allow car passing.







# CURTAIN WALLS & FACADES






System	Thermal Insulation	Type
SMARTIA M85S	◆	Unitized
SMARTIA M65	◆	Unitized
SMARTIA M50	◆	Standard
SMARTIA M50 Security	◆	Standard
SMARTIA M50 Fire Proof	◆	Standard
SMARTIA M7	◆	Standard
SMARTIA M6	◆	Standard
COMFORT M4	◆	Structural
COMFORT M3	◆	Semistructural
SMARTIA M10800	◆	Standard
SMARTIA J-Bond		Standard
SMARTIA Cladding		Standard

## TECHNICAL CHARACTERISTICS

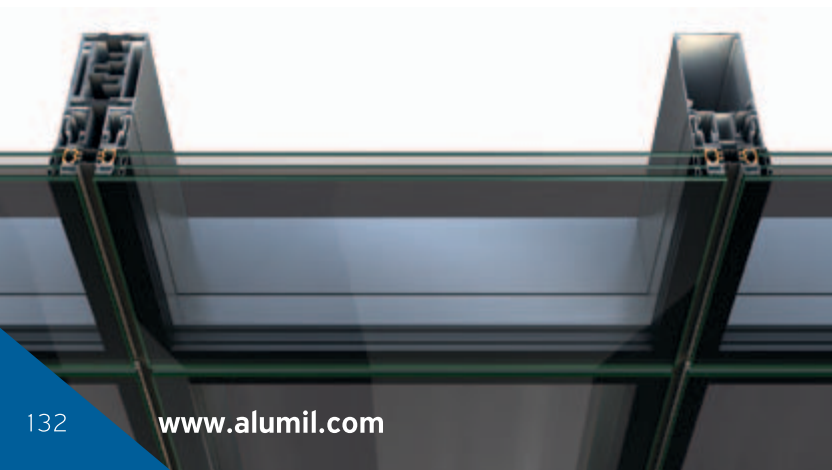


System Depth mm	Glass Thickness mm	Certification Institute
85	32 / 44 mm	
65	up to 32 mm	IFT, AAMA
50	up to 50 mm	IFT, ITC, NTUA
50	up to 32 mm	IFT
50	up to 40 mm	IFT
50	up to 54 mm	IFT
55	up to 50 mm	IFT, ITC, NCTC
55	up to 36 mm	NCTL
55	up to 39 mm	IFT, NCTL
55	up to 50 mm	IFT
-	-	AUTH, ARCHTEST, SIEMENS
-	-	



SMARTIA M85S is the new thermally broken element & structural curtain wall of ALUMIL.

- / 85 mm width of mullions and transoms.
- / Only glazing with total thickness of 32 mm or 44 mm is applicable.
- / Easy replacement of broken glasses.
- / Projected windows can be seamlessly applied.





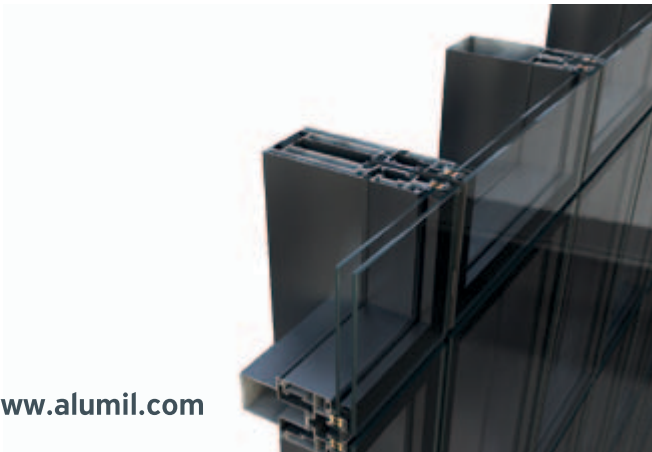
**Alumil**  
SMARTIA  
M85S

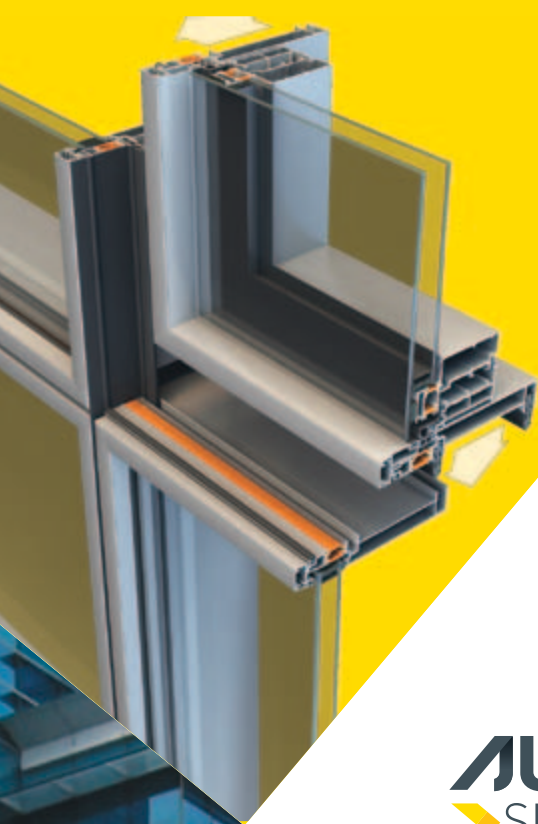




SMARTIA M65 is a unitized curtain wall system ideal for high-rise buildings, providing freedom in architectural design. The construction of the building's envelope is done by assembling large panels consisted of multiple glass frames, either structural or with visible aluminium covers. Every unit can be freely designed by the architect, whilst the system guarantees easy and secure application.

- / 65 mm basic system width.
- / Easy replacement of broken glasses.
- / Various hinged window types can be applied: parallel projected, top hung, all Tilt & Turn windows of SMARTIA systems.
- / Certified performance by ift Rosenheim & AAMA.

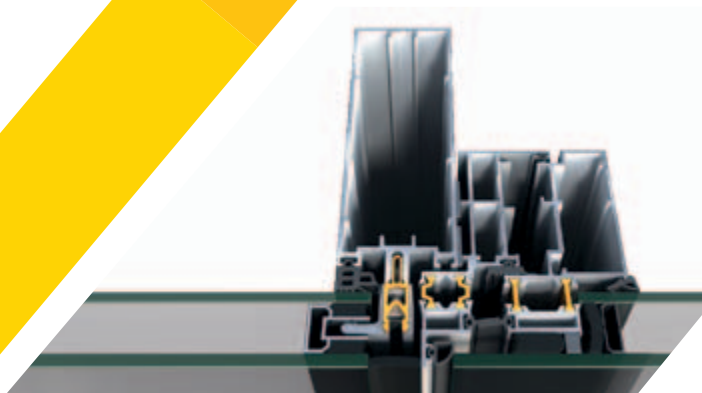




**Alumil**  
SMARTIA  
M65





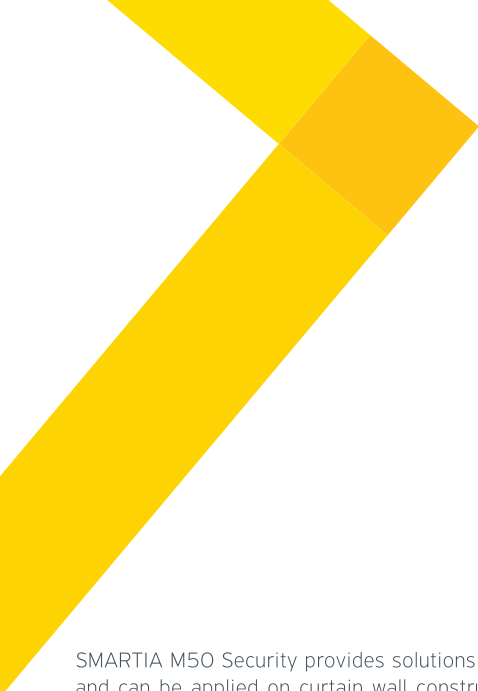


SMARTIA M50 is a complete system for curtain walls with high energy efficiency, which offers infinite design possibilities and meets every requirement of contemporary architecture.

- / Only 50 mm visible width of mullions and transoms.
- / Very high thermal insulation.
- / Large variety of mullions with the option of steel reinforcements in case of high wind loads.
- / Various covers for external surfaces of high aesthetic value.
- / Structural version available without aluminium covers, using the same mullions and transoms.
- / Various hinged window types can be applied: parallel projected, top hung, inwards tilt & turn, concealed sash tilt & turn, seamless inwards tilt & turn.
- / Constructions with inclined or polygonal surfaces.
- / Special support for shading blades.
- / Can be combined with all types of doors of the SMARTIA & SUPREME series.
- / RC3 anti-burglar protection.
- / Bulletproof FB 4S, FB 6S.
- / Fireproof EI 30.
- / Certified by ift Rosenheim.



**Alumil**  
SMARTIA  
M50



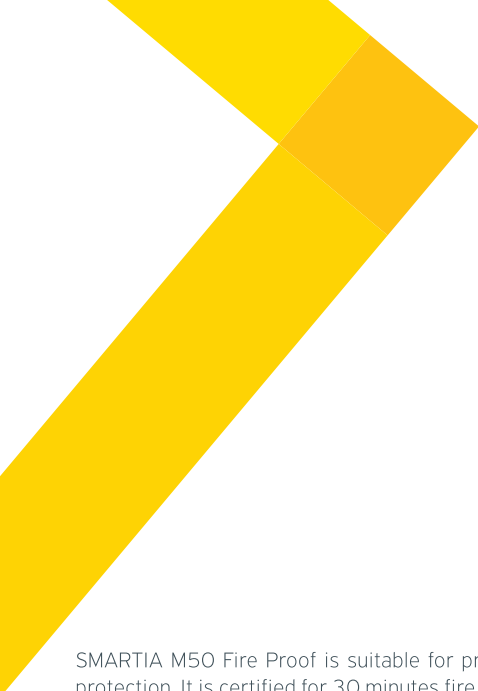
SMARTIA M50 Security provides solutions when high security is needed and can be applied on curtain wall constructions for banks, embassies, government agencies, jewelers etc. The different glazing options that are offered, increase significantly the system's security level and energy efficiency.



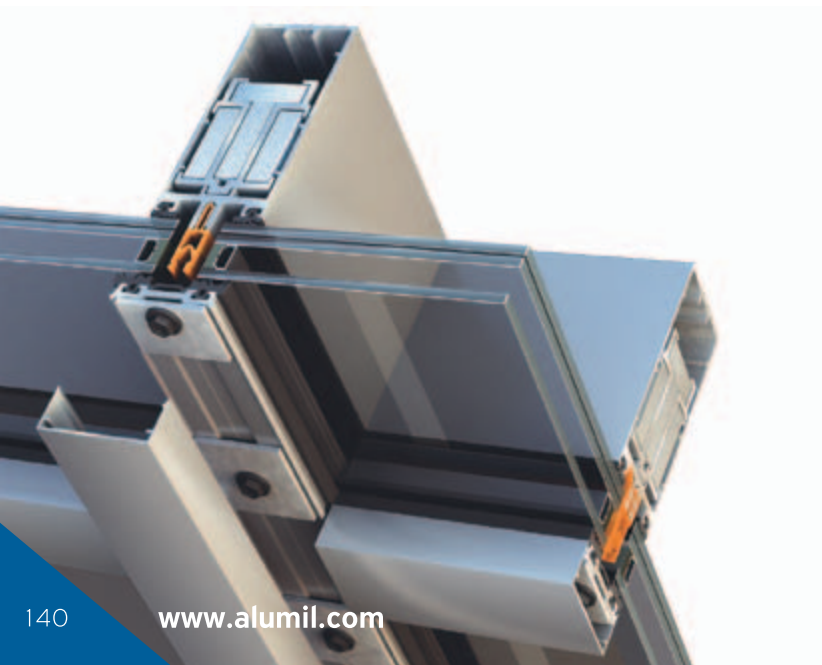


**Alumil**  
SMARTIA  
M50 Security





SMARTIA M50 Fire Proof is suitable for projects which require high fire protection. It is certified for 30 minutes fire resistance and in combination with the appropriate fire proof glazing, it provides the crucial time needed for building evacuation in case of emergency.





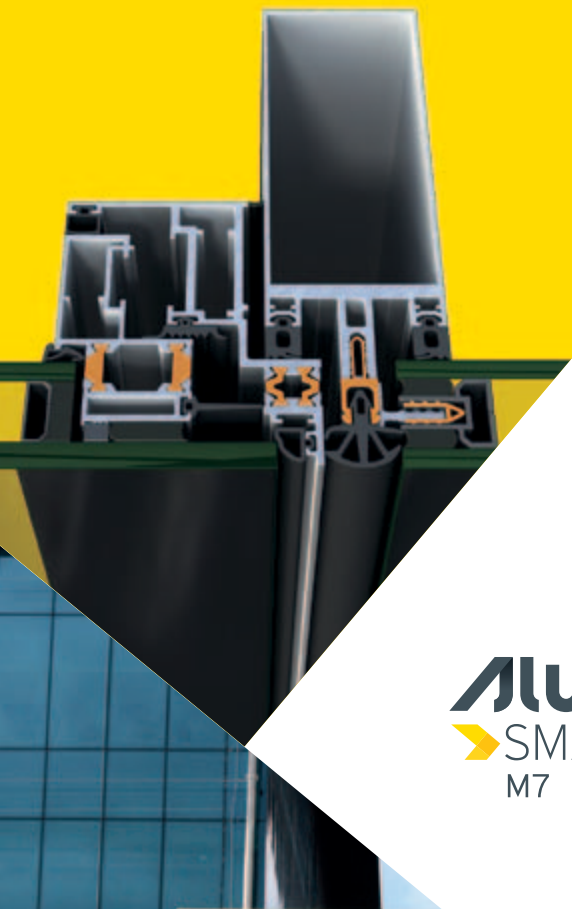
**Alumil**  
SMARTIA  
M50 Fire Proof





SMARTIA M7 is a complete system for high energy efficiency curtain walls. It provides quality constructions in affordable prices and meets totally all stability and safety requirements.

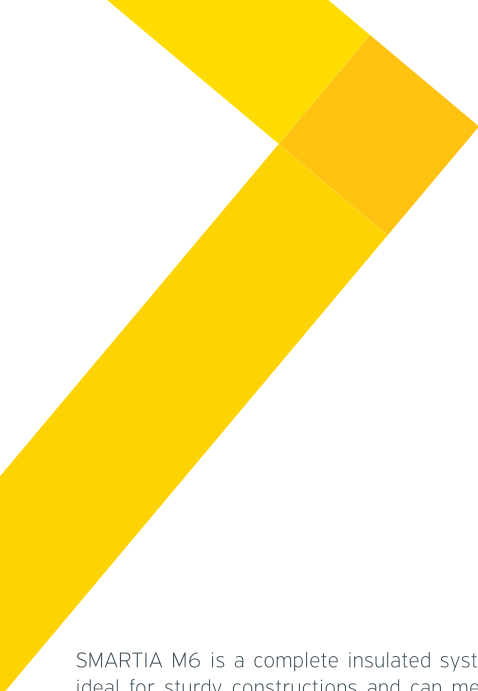
- / 50 mm width of mullions and transoms.
- / High thermal insulation thanks to the special insulating material.
- / Option of structural curtain walls without aluminium covers, using the same depth of mullions and transoms.
- / The transom screws are covered by the transom gasket, thus minimizing water and air penetration problems.
- / Low fabrication cost due to accessories and ease of fabrication.
- / Includes an effective water evacuation system.
- / Special supports for shading louvres.
- / Various hinged window types can be applied: parallel projected, top hung, all Tilt & Turn windows of SMARTIA systems.
- / Constructions with inclined or polygonal surfaces.
- / Can be combined with all types of doors of the SMARTIA series.
- / Certified performance by the ift Rosenheim institute.



**Alumil**  
SMARTIA  
M7

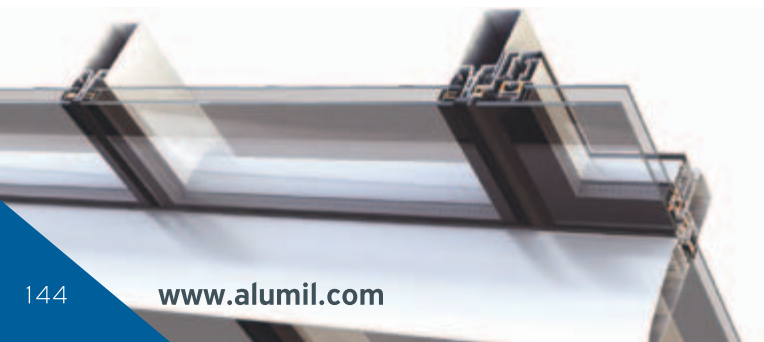







SMARTIA M6 is a complete insulated system for curtain walls, which is ideal for sturdy constructions and can meet effectively all architectural requirements, as for example the creation of large frames.

- / 55 mm width of mullions and transoms.
- / High thermal insulation.
- / Large variety of mullions for high wind loads.
- / Various covers for external surfaces of high aesthetic value.
- / Structural version available without visible aluminium covers.
- / Various hinged window types can be applied: parallel projected, top hung, all Tilt & Turn windows of SMARTIA systems.
- / Constructions with inclined or polygonal surfaces.
- / Can be combined with all types of doors of the SMARTIA series.
- / Certified performance by the ift Rosenheim institute.



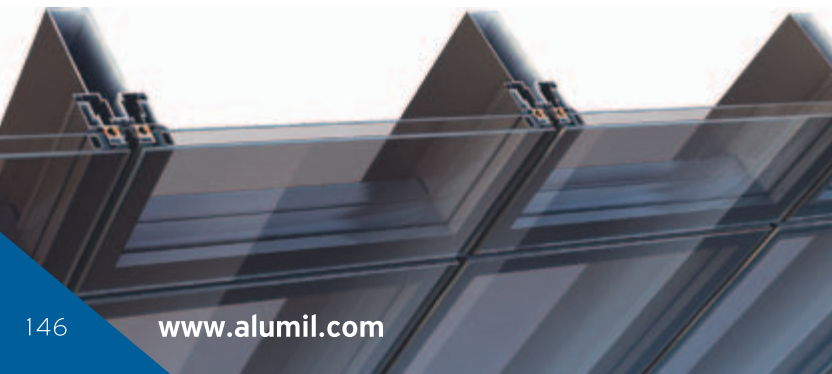


**Alumil**  
▶ SMARTIA  
M6




COMFORT M4 is a thermal insulated system for structural curtain walls with hanging frames (stick type) for faster installation.

- / 55 mm width of mullions.
- / Vents with structural glazing.
- / Distance between glass panels 14 mm.
- / Vents are supported by the mullions on which they are attached through special hardware, securing the frame on the curtain wall structure.
- / The same vents can be either fixed or projected outwards (windows parallel projected or top hung).
- / Big variety of mullions for high wind loads.
- / Polygonal surfaces are possible.
- / Can be combined with doors from the SMARTIA series.
- / Very easy installation on the building.
- / Certified by AAMA.





**Alumil**  
COMFORT  
M4



COMFORT M3 is a thermal insulated system for semi-structural curtain walls with hanging frames (stick type) for faster installation.

- / 55 mm width of mullions.
- / Visible aluminium frame width of 14 mm.
- / Vents are supported by the mullions on which they are attached by means of special hardware, which secure the frame on the curtain wall structure.
- / The same vents can be either fixed or projected outwards (windows parallel projected or top hung).
- / Big variety of columns for high wind loads.
- / Polygonal surfaces are possible.
- / Can be combined with doors from the SMARTIA series.
- / Very easy and cost effective installation.
- / Certified by AAMA.



**Alumil**  
COMFORT  
M3

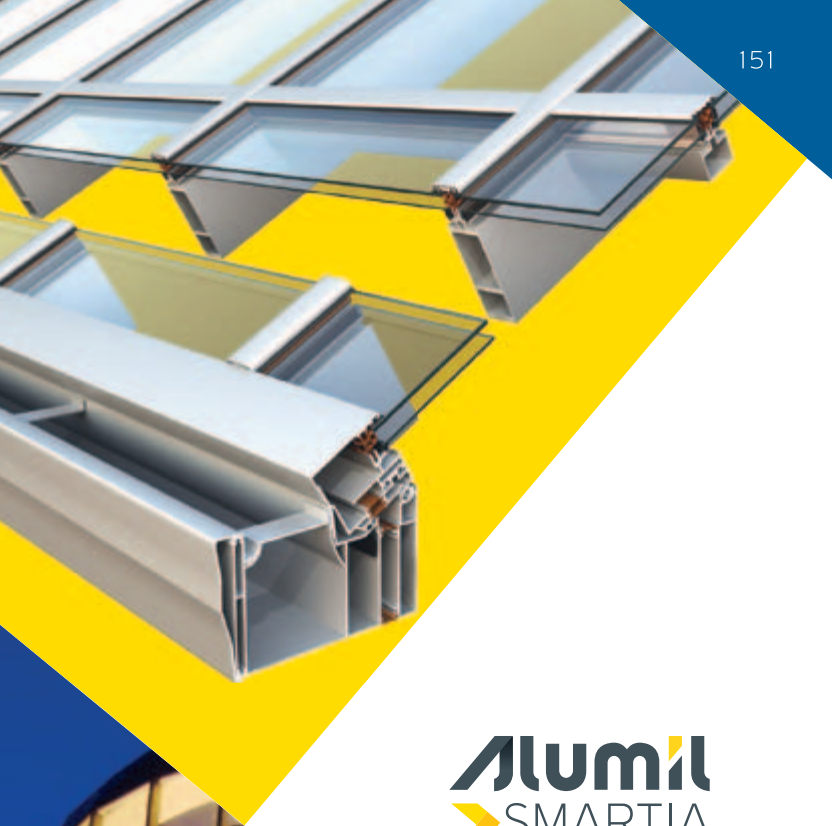




SMARTIA M10800 is a complete system for winter gardens, skylights, atriums and greenhouses.

- / Can be combined with curtain wall SMARTIA M6 for more complex structures.
- / Sturdy constructions with any kind of geometry (e.g. pyramid, domes).
- / Draining system designed for condensed vapor removal and rainwater outflow.
- / Ability to include motorized windows.

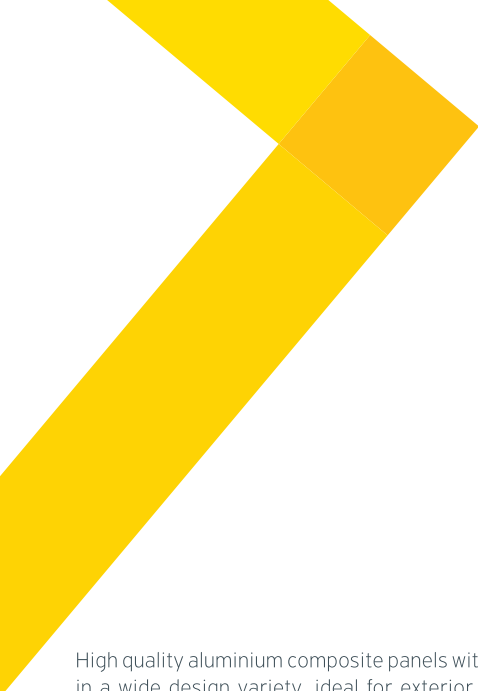




**Alumil**  
▶ SMARTIA  
M10800







High quality aluminium composite panels with polyethylene filling, available in a wide design variety, ideal for exterior cladding and interior building decorations, as well as for an infinite number of applications.

- / Available in a wide variety of colors with extremely high resistant finish (PVDF).
- / Characterised by stiffness, low weight, sound insulation and resistance to corrosion, wear and fading.
- / Very easy fabrication, configuration and installation leading to low construction costs.
- / Complete support system.
- / With 4 mm thickness and 3,2 m length (special dimensions are available).





**Alumil**  
SMARTIA  
J-Bond





The SMARTIA Cladding system is a complete system of profiles and fittings, suitable for exterior coverings with materials such as:

- / Fired earth tiles of different dimensions and colors.
- / Synthetic resin panels.
- / Specially treated wood panels for exterior use.
- / Special aluminium support system which is characterized by easy installation and top sturdiness.





**Alumil**  
SMARTIA  
Cladding



## OFFICE PARTITIONS





SMARTIA P200 is ALUMIL's best-in-class system for interior partitions, offering minimal site lines, ideal for offices, meeting rooms etc.

The thickness of the double glazing panel is 100 mm and the sound insulation exceeds 38 dB. The system is capable of accepting electric rotating blinds inside the glass panel.

#### **/ Panel Type**

The glass panel can be either "structural" or "semi-structural". In the first case, one has the impression of an all-glass surface interrupted by "structural" lines (through tape or silicone), while in the second case the impression of a glazing surface interrupted by aluminium strips is created. Wood panels can also be applied.

#### **/ Structure type**

The installation consists of a continuous grid and may include corner, "T" and cross structures.

#### **/ Door type**

Door panels are offered in a wide range of options including structurally glazed doors (coplanar at one or both sides), simple glass doors and wooden doors.



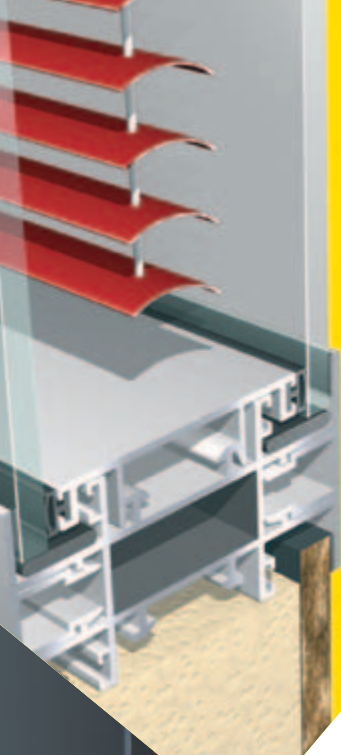
**Alumil**  
▶ SMARTIA  
P200





SMARTIA P100 is a classic partitioning system with very slim aluminium profiles. It is characterised by its sturdiness and a wide variety of available features. Moreover, its installation is very fast and cost effective.

- / Straight minimal lines.
- / Angled constructions with fixed or variable corners.
- / Special profiles for easy and concealed wires/switches installation.
- / Various door options, either with aluminium frames that have round edges or also wooden doors in numerous designs.
- / Installation of rotating blinds within the glass panel.
- / Possibility for lower constructions (open office).



**Alumil**  
▶ SMARTIA  
P100





## RAILINGS





ALUMIL vertical glass support system of modern aesthetics without mullions, so as to leave the visual field free, offering a sense of luxurious freedom.

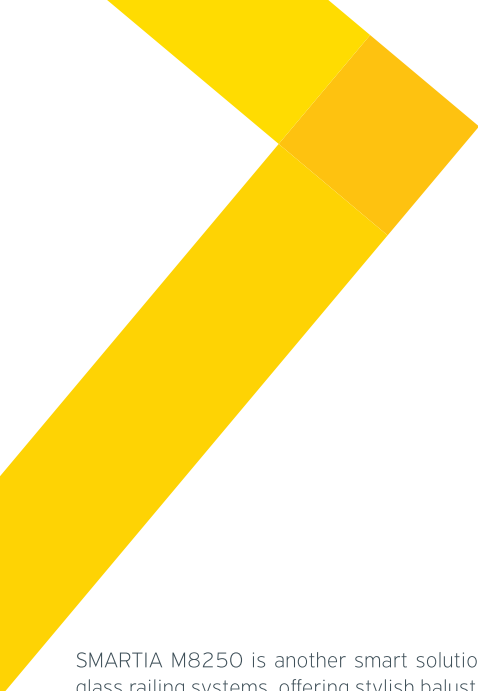
- / Extreme sturdiness due to the continuous profile logic.
- / Easy and fast installation without any glass alignment issues.
- / On-floor, in-floor and side mounted.
- / Compatible with glass laminate tempered 5+5 mm, 6+6 mm, 8+8 mm and 10+10 mm, up to 1,2 m high.
- / Various handrail shapes (round, oval, flat).
- / Ideal for modern residences, hotels and shopping malls, public buildings and surrounding areas for exterior or interior use.
- / Top surface treatment by ALUMIL in anodising and powder coating finishes for maximum resistance to weather conditions, especially at coastal areas.





**Alumil**  
SMARTIA  
M8200





SMARTIA M8250 is another smart solution in ALUMIL's large range of glass railing systems, offering stylish balustrades placed on the outer side of windows when no balconies are available. Characterised by ultimate transparency and safety, they offer uninterrupted view and maximum natural lighting to the building.

Being side-mounted, fixed either on the wall or on the frame, they do not need any handrail or bottom rail and have all bolts and fixings concealed, offering a frameless minimal design. For single or multiple panels with 6+6 mm and 8+8 mm thickness glass.





**Alumil**  
▶ SMARTIA  
M8250





COMFORT M8100 is a railing system ideal for balconies, indoor and outdoor stairs, fences, swimming pools etc.

- / Vast variety of typologies and customizations, with glass, horizontal and vertical bars etc.
- / Profile with round and square section.
- / In two anodising polished shades (inox, light silver) and also in wood imitation.

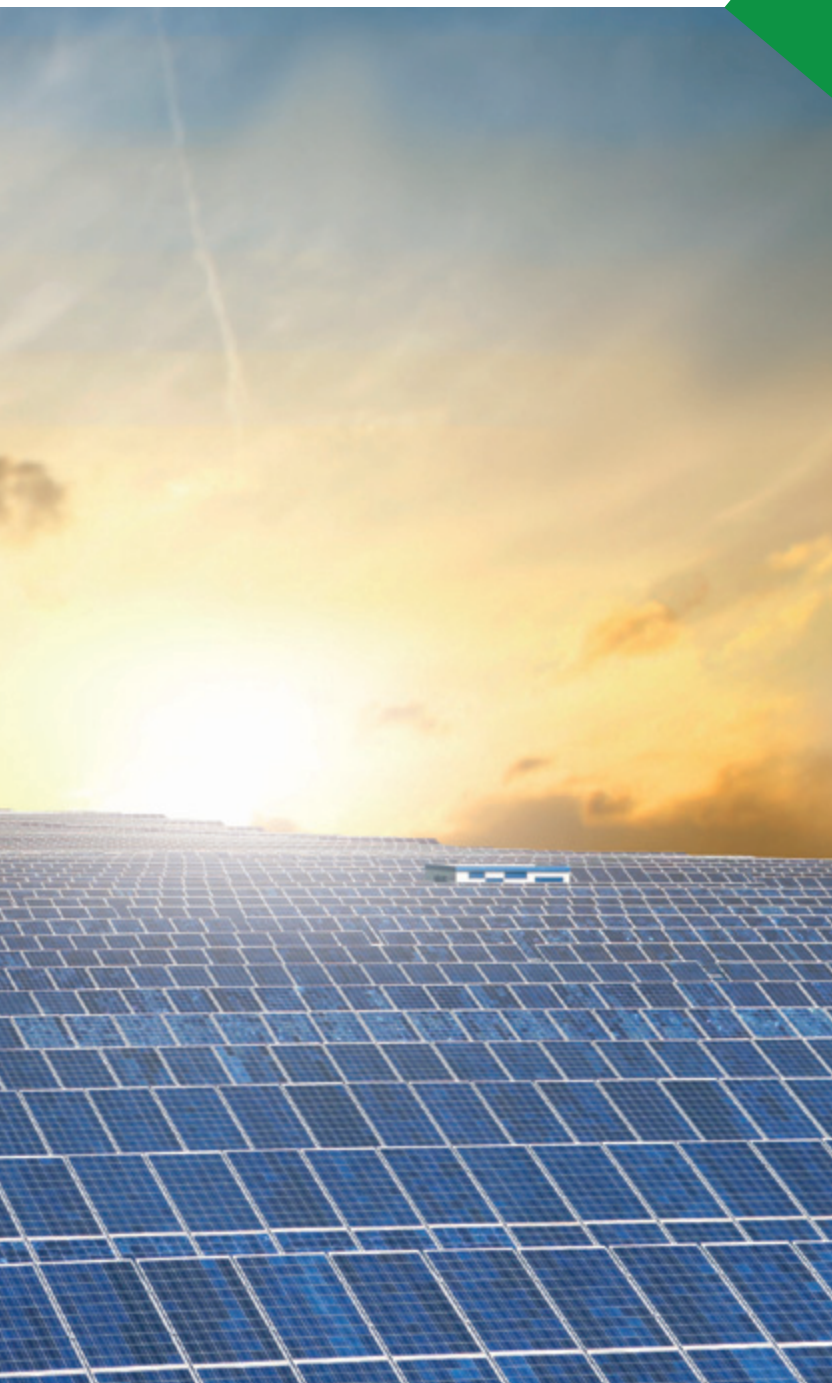




**Alumil**  
COMFORT  
M8100



# PHOTOVOLTAICS





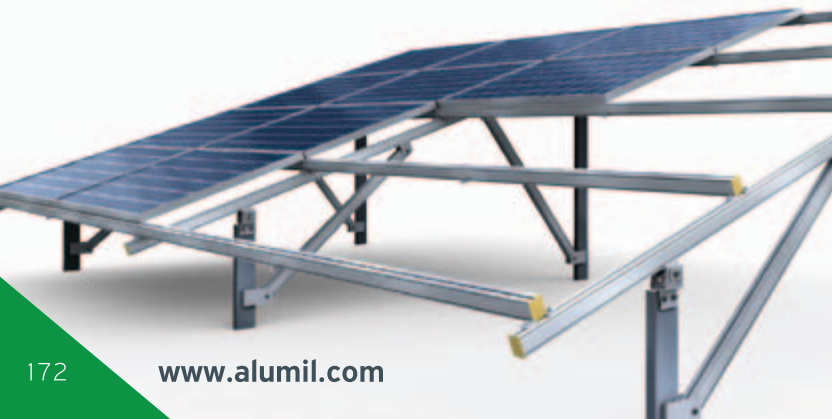
**Alumil**  
SOLAR  
H2100  
FREE FIELD - AS189



AS189 is the best solution for free field application with pile foundation. It can support all kind of panel alignment (portrait, landscape) and can be designed for the optimum inclination angle.

The two hot-dip galvanized steel piles with coating 80µm for corrosion resistance are combined with aluminum main structure (alloy 6005A) and offer the best possible spans between triangles.

The static study that accompanies each project according to meteorological and soil conditions provide the necessary security to installers. Certified according to Eurocodes and with a 20 years warranty according to warranty conditions, it is delivered on the field in pre-assembled triangles and offers flexibility, security and speed to installers in every large scale free field photovoltaic installation.



# Alumil

## SOLAR

### H2100

#### FREE FIELD - AS190



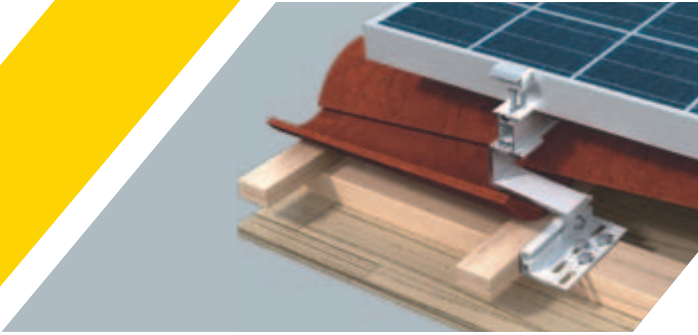
H2100-190 system is the most innovative mounting system for PV installation in fields and gives the opportunity to the installer to deal with the imbalances and the soil inclinations with a simple and economical manner.

The advantages and the innovations of this mounting include:

- / Adjustment of the mounting in a sloping ground up to +/-10° or 18%.
- / Minimization of the installation time:
  1. One pile per mounting triangle.
  2. Less time for the leveling since the installer has just to level according to East-West direction.
  3. Fewer screws.
  4. The system comes pre-assembled.
- / Certified according to Eurocodes with 20 years warranty.
- / Structural and static study for each project after closing the deal.
- / Special system to prevent direct contact between steel and aluminium parts.



**Alumil**  
SOLAR  
H2200 Roof



H2200 Roof series offer the possibility for easy assembly by achieving large spans (up to 2 m) between the mounting points.

Depending on the requirements of each project, our structures can be adjusted in 3 dimensions, and fit in various types of tile (e.g. Roman, Dutch).

PV modules can be placed either in portrait or landscape position for an optimal roof coverage.



# Alumil

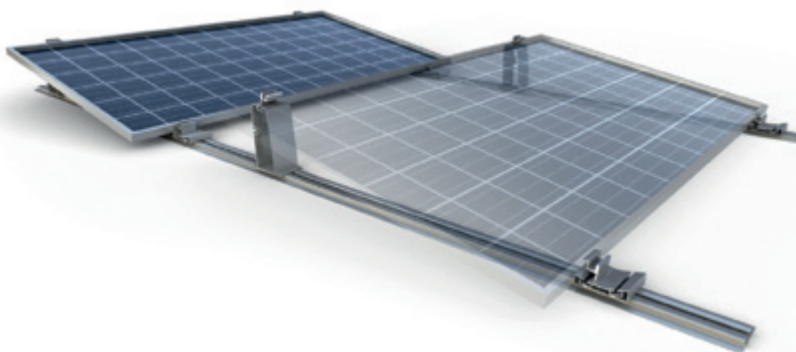
## SOLAR H2300



H2300 series are designed for easy assembly on the terrace surface. These are lightweight structures that consist of few components. The maximum span is 2m between the mounting points depending on the wind and snow loads. There is also the ability to change the slope from 10 up to 35 degrees. Despite its low weight, the system uses high-strength materials (aluminium alloy 6005T6). Moreover, PV modules can be placed either in portrait or landscape position for an optimal coverage of the surface.

### **H2300 FLAT ROOF-SOLFIE**

The Solfie solution is a low-ballast mounting system for PV installations on flat roofs. The system is designed to hold one panel in landscape orientation and with 10 degrees inclination. Its main goal is to offer the ability to installers not to damage the insulation of the roof by avoiding any kind of roof penetration. To achieve that, we use special concrete blocks. Certified according to Eurocodes and with a 20 years warranty according to warranty conditions the system provides protection for your rooftop and offers an easy, fast and economical photovoltaic installation made by aluminium.





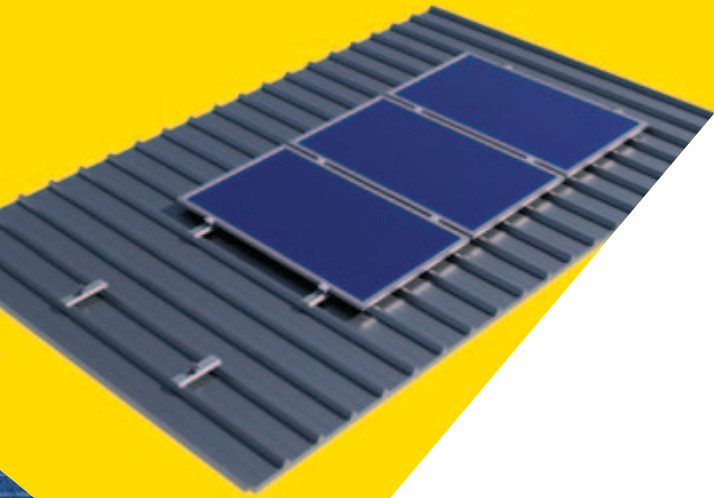


ALUMIL, recognizing its installers need for quick and safe structures, improved the PV mounting system on industrial roofs considerably, by offering an innovative solution bearing numerous advantages. PV modules can be placed either in portrait or landscape position for an optimal roof coverage.

- / Quick and easy assembly.
- / Adaption to various types of industrial roofs.
- / New H22 16 profile which is light and strong and therefore reduces the weight on the carrying structure of the industrial roof.
- / Due to the dimensions of the profile, panels are better ventilated; as a result, the installation performs better in high temperatures.

The installation time is **reduced up to 50%**.





**Alumil**  
SOLAR  
H2400  
INDUSTRIAL  
ROOF-AS405



## **HYBRID ALUMINIUM TRACKER**

The new innovative aluminum system H2500 offers a sun tracking function based on the innovative motion of the “flexible geometry structure”. The light weight system, which is made of aluminium, combines the advantages of traditional tracking systems and at the same time the reliability and flexibility of fixed structure. Because of the above mentioned hybrid design, the H2500 is an excellent “value for money” approach for solar projects.

The tracker movement is guided by a Programmable Logic Controller using astronomical data.

- / Average efficiency increase more than 30%.
- / Cost saving more than 50% comparing to traditional tracking systems.
- / Light and “easy handling” structure.
- / Fast and easy installation.
- / Pre-assembled.
- / Calculated with finite element analysis based on Eurocode standards.
- / Appropriate for all the types of panels (max dim 1700x1000 mm).
- / Low energy self-consumption.
- / Minimum service maintenance requirements.



**Alumil**  
SOLAR  
H2500





## **THIN FILM: NEW MOUNTING SYSTEM FOR LARGE SCALE PV PROJECTS WITH THIN-FILM MODULES**

ALUMIL designed and produced the H2600 mounting system for THIN-FILM modules (frameless) and special rubber clamps for quick and safe positioning of the panels to the basis. These clamps are certified by company SHARP. H2600 mounting system is already used widely in big PV parks with great success and effective results.

The new internationally certified system combines all the ADVANTAGES of the existing system and furthermore gives to the installer many options regarding the positioning of panels and the inclination of the support system.



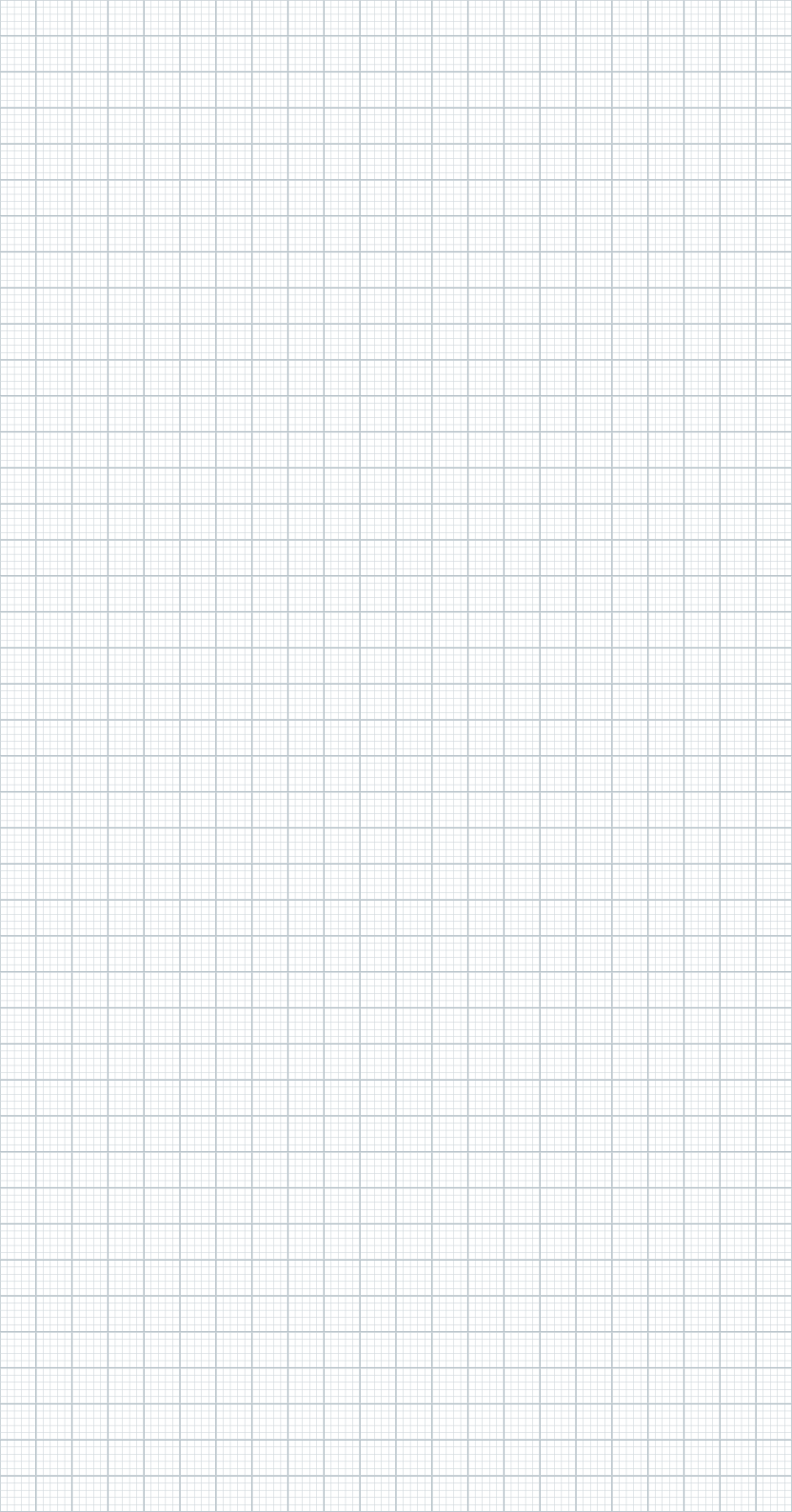
**Alumil**  
SOLAR  
H2600

**SHARP**

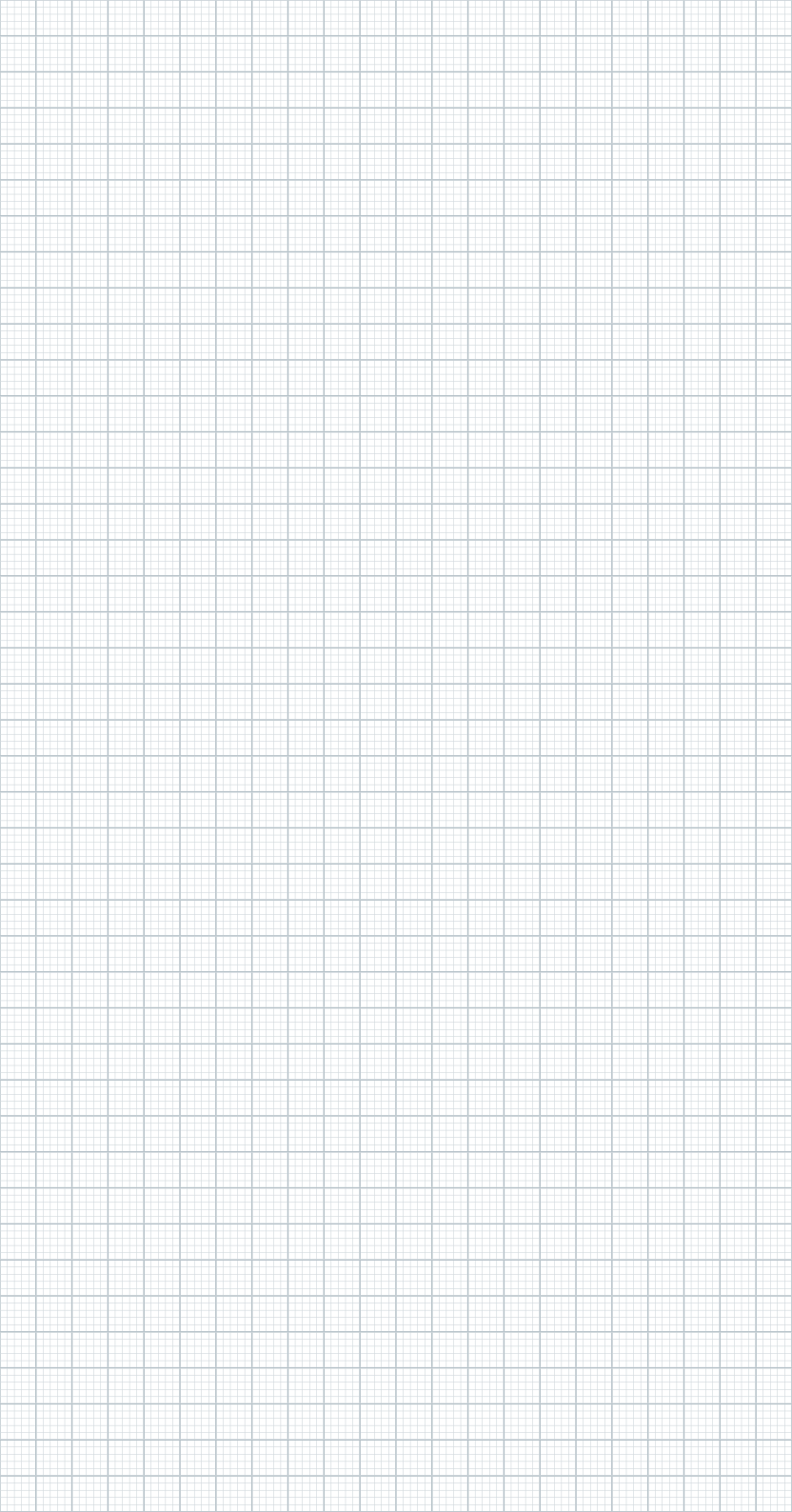


The image features a white background with a light gray grid pattern. In the upper-left corner, there are two overlapping yellow geometric shapes: a larger triangle pointing towards the top-right and a smaller triangle pointing towards the bottom-right. The word "Alumil" is written in a bold, dark blue, sans-serif font, positioned within the intersection of these two yellow shapes. The letter 'i' in "Alumil" has a small white vertical bar above it.

**Alumil**











**Alumil**  
Building excellence every day

**HEADQUARTERS & FACTORY**

Kilkis Industrial Area  
Kilkis - GR 611 00  
Tel: +30 23410 79300  
Fax: +30 23410 71988  
E-mail: [info@alumil.com](mailto:info@alumil.com)

**HEAD OFFICES  
& SHOWROOM - THESSALONIKI**

Gogousi 8, Efkarpia  
Thessaloniki - GR 564 29  
Tel: +30 2313 011000  
Fax: +30 2310 692473  
E-mail: [info@alumil.com](mailto:info@alumil.com)

[www.alumil.com](http://www.alumil.com)