



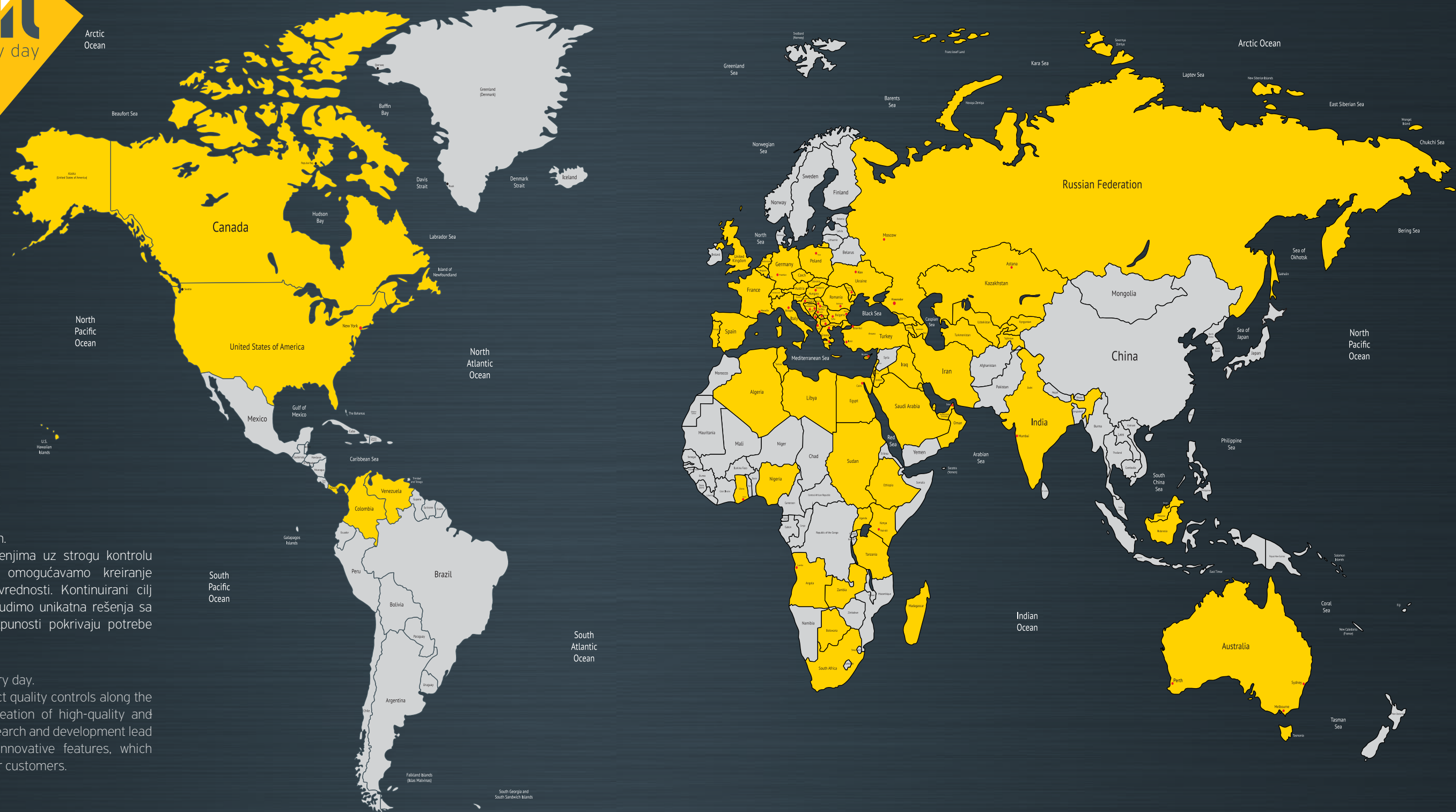
**Alumi**



**Alumi**  **SUPREME**

# ALUMIL ŠIROM SVETA

## ALUMIL WORLDWIDE



U ALUMIL-u gradimo savršenstvo svaki dan.

U našim modernim proizvodnim postrojenjima uz strogu kontrolu kvaliteta celog proizvodnog procesa, omogućavamo kreiranje vrhunskih proizvoda visoke upotrebne vrednosti. Kontinuirani cilj našeg istraživanja i razvoja jeste da ponudimo unikatna rešenja sa inovativnim karakteristikama, koja u potpunosti pokrivaju potrebe naših klijenata.

At ALUMIL, we are building excellence every day.

Through our modern facilities and the strict quality controls along the entire production line, we ensure the creation of high-quality and added-value products. Our continuous research and development lead to the offer of unique solutions with innovative features, which completely cover the different needs of our customers.



## Sadržaj Contents

|   |    |
|---|----|
| UVOD<br>INTRODUCTION                      | 2  |
| S91                                       | 6  |
| S650 PHOS                                 | 8  |
| S700                                      | 14 |
| SF85                                      | 20 |
| SD115 PIVOT                               | 26 |
| SD95                                      | 30 |
| RUČICE<br>HANDLES                         | 34 |
| REFERENTNI PROJEKTI<br>REFERENCE PROJECTS | 36 |

## Najbolji u klasi arhitektonskih aluminijumskih sistema

SUPREME proizvodi su nova generacija ALUMIL unapređenih sistema visokog standarda funkcionalnosti i dizajna koji nude arhitektonska rešenja najboljih performansi i standarda kvaliteta, idealni za savremene konstrukcije.

ALUMIL-ova vertikalna organizaciona struktura osigurava najviši nivo kontrole proizvodnih procesa i garanciju kvaliteta. Iz tog razloga, SUPREME proizvodi dostupni su isključivo preko mreže ovlašćenih proizvođača koji strogo prate visoke tehničke specifikacije i proizvodne procese definisane od ALUMIL-a.

### Nova generacija SUPREME sistema nudi:

- / Minimalistički i inovativan dizajn.
- / Optimalna rešenja za velike i impresivne otvore.
- / Visoku energetska efikasnost i vrhunske performanse.

## Best-in-class architectural aluminium systems

SUPREME products are the new generation of ALUMIL's advanced systems, designed according to the highest functionality and aesthetics standards to offer architectural solutions of outstanding performance and quality, ideal for modern constructions.

SUPREME series consists of unparalleled products, developed in accordance with the highest possible quality control. For this reason, the products are available through an exclusive network of authorized fabricators, who strictly follow ALUMIL's technical specifications and fabrication processes.

### The innovative SUPREME series offers:

- / Minimal and groundbreaking design.
- / Original solutions for large and impressive constructions.
- / High energy efficiency and top performance.



### S91

Specijalno dizajniran da ispuni zahtevne standarde visoke energetske efikasnosti pasivnih zgrada.

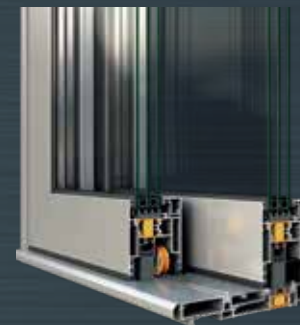
Hinged system specially designed to meet the high energy efficiency standards of passive buildings.



### S650 PHOS

Klizni sistem minimalističkog dizajna, dostupan na manuelni ili elektropogon, idealan za velike površine od stakla sa minimalno vidljivim aluminijumskim ramom.

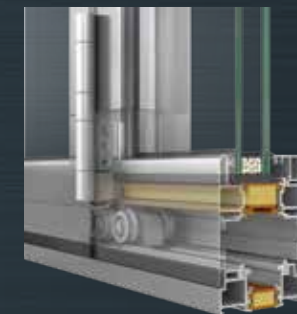
Minimal sliding system, manual or automated, ideal for large glass surfaces with minimum visible aluminium frame.



### S700

Napredni podizno-klizni sistem. Nova sinteza "transparentne" arhitekture, energetske efikasnosti i bezbednosti.

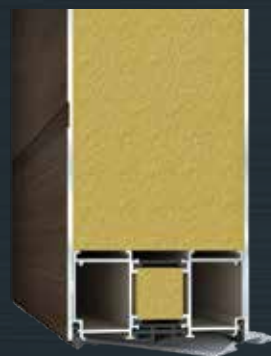
Advanced lift & slide system. The new synthesis of "transparent" architecture, energy efficiency and safety.



### SF85

Minimalistički sistem sklopivih vrata za konstrukcije većih razmera, koji pruža izuzetnu sigurnost i energetske efikasnost.

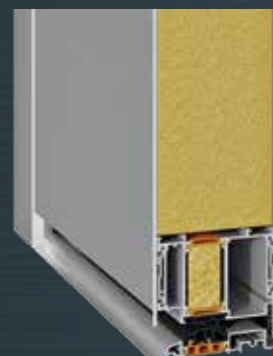
Minimal bi-folding door system for oversized constructions offering exceptional levels of security and energy efficiency.



### SD115 PIVOT

Pivot ulazna vrata visokog arhitektonskih standarda koja izlaze u susret najzahtevnijim potrebama.

Pivot entrance doors of high architectural standards that meet even the most demanding needs.



### SD95

Ulazna vrata elegantnog dizajna, koja ispunjavaju i najzahtevnije arhitektonske zahteve.

Elegant entrance doors that fulfil the most demanding architectural requirements.



# Alumil SUPREME S91



Sistem SUPREME S91 dizajniran prema zahtevima pasivnih kuća, ALUMIL-ovo je najnovije rešenje za robusne i moderne termički izolovane okretno-nagibne prozore. Razvoj sistema vođen je potrebom za najboljim performansama u pogledu termičke izolacije, vodonepropustljivosti, redukcije zvuka kao i visokog nivoa sigurnosti. Ove karakteristike čine sistem najboljim izborom za najzahtevnije projekte na najnaprednijim tržištima.

- / Sertifikovani od Instituta za pasivne kuće (PHI), u skladu sa zahtevima pasivnih kuća.
- / Vidljiva visina aluminijumskih profila od samo 93 mm.
- / Superiorna termička izolacija od  $U_f \geq 0,67 \text{ W/m}^2\text{K}$ , zahvaljujući upotrebi poliamida ojačanog fibreglasom širine 54 mm, PE izolacionom penom i Energy bar-om.
- / Izuzetan nivo vodonepropustljivosti postignut je sa specijalnom dvostruko ekstrudiranom EPDM gumom.
- / Idealan za sve tipologije okretno-nagibnih prozora i balkonskih vrata.

## Tehničke karakteristike

|  |  |
|--|--|
| Vidljiva visina aluminijumskih profila | <b>93 mm</b>   |
| Visina rama                            | <b>61 mm</b>   |
| Širina rama                            | <b>91 mm</b>   |
| Visina krila                           | <b>73 mm</b>   |
| Širina krila                           | <b>99 mm</b>   |
| Nosivost krila                         | <b>do 180 Kg</b>   |
| Debljina stakla                        | <b>od 37 do 81 mm</b>  |
| Toplotna izolacija                     | <b>Poliamid širine 54 mm, ALUMIL Energy Bar i PE izolaciona pena</b> |

## Performanse

|   |  |
|---|--|
| Termička izolacija<br>EN ISO 10077-2                          | <b><math>U_w=0,79 \text{ W/m}^2\text{K}</math></b> |
| *Za dimenzije 1,23 x 1,48 m i $U_g=0,7 \text{ W/m}^2\text{K}$ |  |

The SUPREME S91 system, designed for passive house constructions, is ALUMIL's latest solution for robust and modern hinged thermally insulated systems. The system is characterized by its best-in-class performance in terms of thermal insulation, watertightness and sound reduction as well as the high level of security that offers. These characteristics make the system the best choice for the most demanding projects in the most advanced markets.

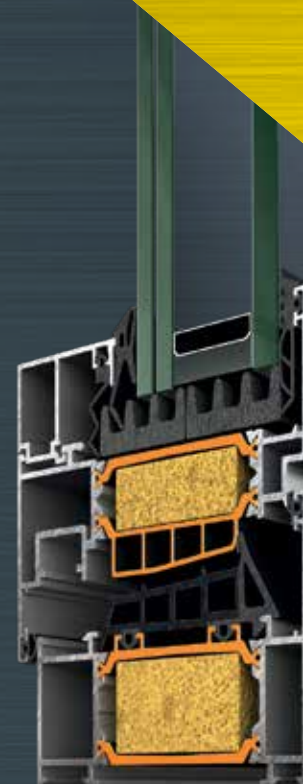
- / Certified by the Passive House Institute (PHI), according to passive house specifications. Visible aluminium face of only 93 mm width.
- / Superior thermal insulation with  $U_f \geq 0,67 \text{ W/m}^2\text{K}$ , thanks to the use of fiberglass reinforced polyamides 54 mm width, PE insulation foam and NRG bars.
- / Exceptional level of watertightness, achieved by a special co-extruded foam EPDM gasket.
- / Ideal for all typologies of casements and patio doors.

## Technical characteristics

|                              |   |
|------------------------------|---|
| Visible aluminium face width | <b>93 mm</b>  |
| Frame height                 | <b>61 mm</b>  |
| Frame width                  | <b>91 mm</b>  |
| Sash height                  | <b>73 mm</b>  |
| Sash width                   | <b>99 mm</b>  |
| Sash weight                  | <b>up to 180 Kg</b>   |
| Glazing                      | <b>37 up to 81 mm</b>   |
| Thermal insulation           | <b>Polyamides 54 mm width, PE insulation foam &amp; NRG Bar</b> |

## Performance

|   |  |
|---|--|
| Thermal insulation<br>EN ISO 10077-2                              | <b><math>U_w=0,79 \text{ W/m}^2\text{K}</math></b> |
| *For dimensions 1,23 x 1,48 m and $U_g=0,7 \text{ W/m}^2\text{K}$ |  |



## Inovativni okretno-nagibni sistem za pasivne kuće

Innovative hinged system for passive houses



## Apsolutni osećaj slobode

Klizni termički izolovani sistem SUPREME S650 PHOS idealno je rešenje za projekte koji zahtevaju široke raspone sa minimalnim vidljivim aluminijumom. Masivne i elegantne staklene površine postignute su uz visoku funkcionalnost, performanse i minimalistički arhitektonski dizajn.

Glavna prednost ovog sistema predstavlja unapređenje uslova života povećanjem prirodnog osvetljenja i smanjenjem vidljivog aluminijuma, čineći da se osoba oseća bliže spoljašnjem okruženju imajući osećaj slobode.

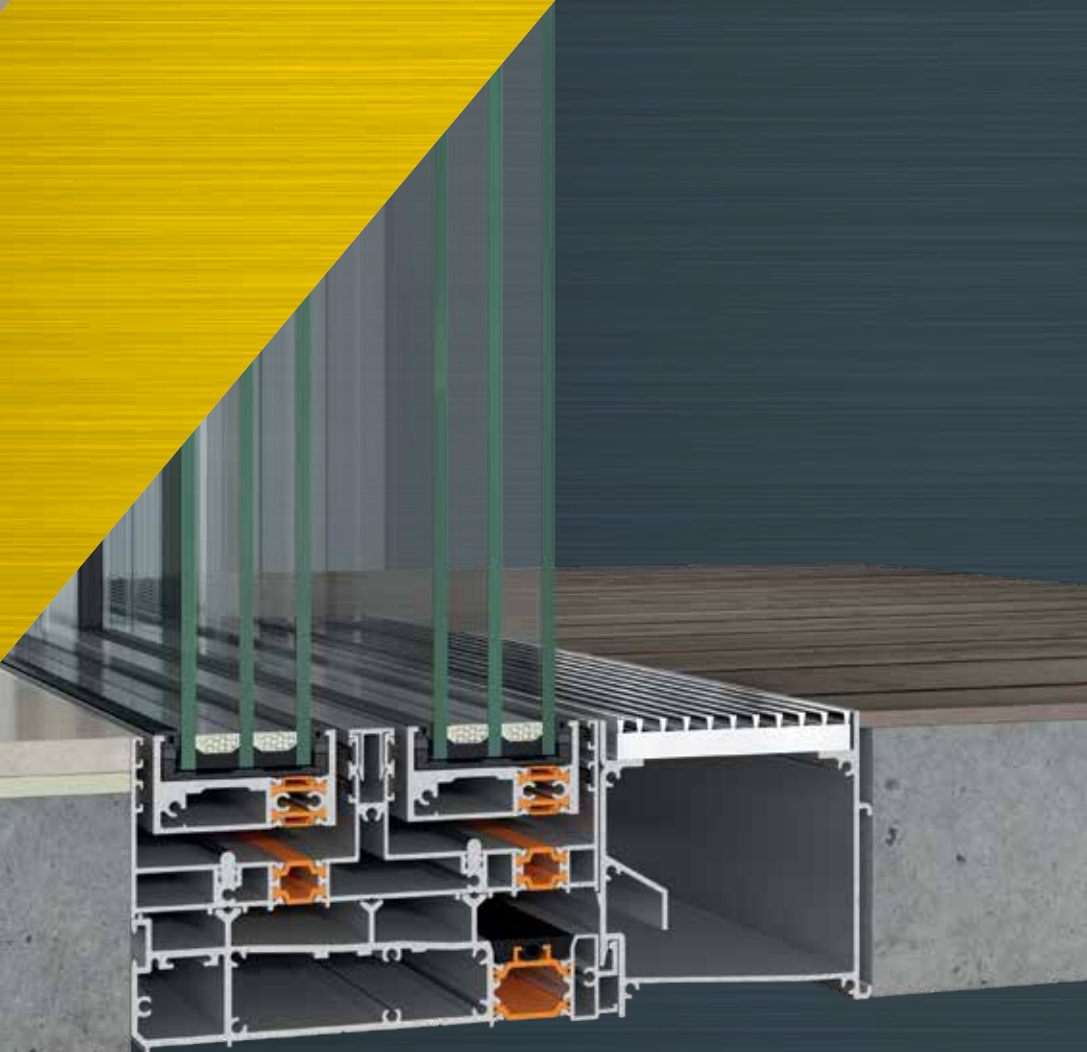
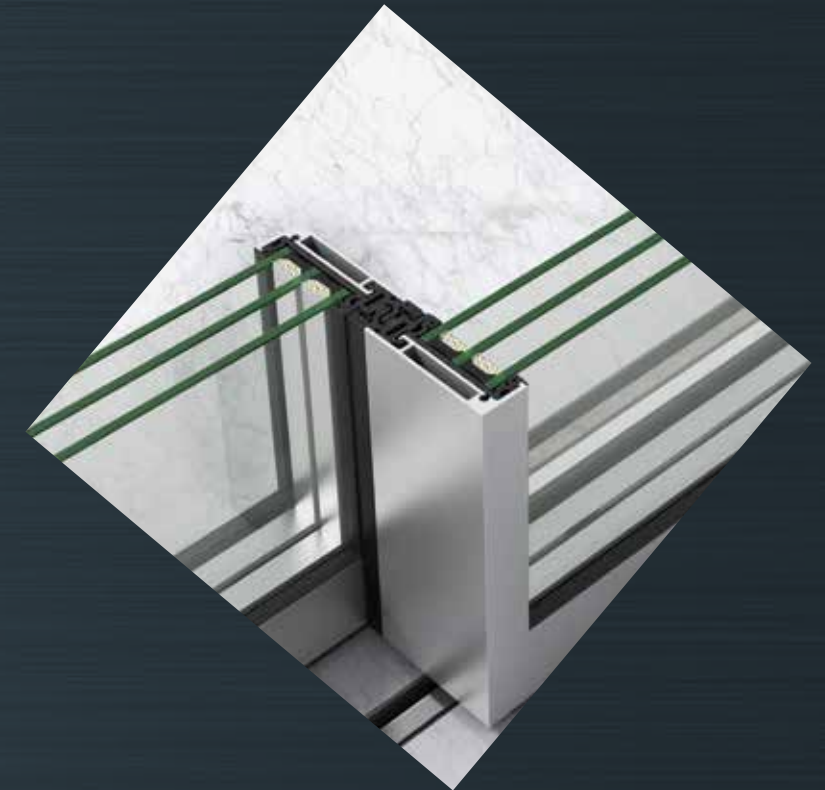
## The absolute sense of freedom

ALUMIL's sliding thermally insulated system SUPREME S650 is the ideal solution for projects requiring wide spans with minimal aluminium sight lines. Massive, yet elegant, glazing surfaces are achieved, while maintaining high functionality, performance and minimal architectural design.

The system's main advantage is the improvement of living conditions, by maximizing the natural light and minimizing the visible aluminium face width. Thus, the residents feel closer to the external environment, increasing their sense of freedom.

# Alumil SUPREME S650 PHOS

- / Standardna dubina 62 mm.
  - / Svi aluminijumski profili potpuno su skriveni u zid što povećava nivo prirodnog osvetljenja prostora.
  - / Širina vidljivog aluminijuma na preklopu krila od samo 25 mm.
  - / Dostupni dodatni skriveni profili za drenažu vode.
  - / Točkići od nerđajućeg čelika koji omogućavaju nesmetano klizanje i maksimalnu funkcionalnost sa visokom otpornošću na koroziju.
  - / Dostupna su 3 alternativna rešenja montaže na pod, u pod ili potpuno skriveno odnosno prekriveno podnom oblogom (verzija SUPREME S650 ECLIPSE).
  - / Alternativna automatizovana verzija (SUPREME S650 e-MOTION).
- 
- / Basic system's depth 62 mm.
  - / All the aluminium profiles are totally integrated into the walls, maximizing natural light in the buildings.
  - / Only 25 mm visible aluminium face width at the interlocking profile.
  - / Extra concealed profiles available for water drainage.
  - / Stainless steel rollers for smooth sliding and maximum functionality, with high resistance to corrosion.
  - / Availability of 3 alternative solutions for the on-floor, in-floor or totally concealed in-floor installation, covered with the floor finish (version SUPREME S650 ECLIPSE).
  - / Alternative automated version (SUPREME S650 e-MOTION).



# Alumil SUPREME S650 PHOS

## Tehničke karakteristike

| Vidljiva visina aluminijskih profila | Skriveni profili |
|--------------------------------------|------------------|
| Visina rama                          | 35 / 59 / 64 mm  |
| Širina rama                          | 164 mm           |
| Visina krila                         | 22/32 mm         |
| Širina krila                         | 62 mm            |
| Širina preklopnog profila            | 25 mm            |
| Nosivost krila                       | do 1000 Kg       |
| Širina zastakljivanja                | 35/45 mm         |
| Toplotna izolacija                   | Poliamid, PVC    |

## Performanse

|  |                                   |
|--|-----------------------------------|
| Toplotna izolacija   |                                   |
| EN ISO 10077-2   | $U_w = 1,1 \text{ W/m}^2\text{K}$ |
| *Za dimenzije otvora (Š x V) 5,00 x 2,50 m i $U_g = 0,7 \text{ W/m}^2\text{K}$ |                                   |

## Technical characteristics

| Visible aluminium face width | Concealed profiles |
|------------------------------|--------------------|
| Frame height                 | 35 / 59 / 64 mm    |
| Frame width                  | 164 mm             |
| Sash height                  | 22/32 mm           |
| Sash width                   | 62 mm              |
| Interlocking profile width   | 25 mm              |
| Sash weight                  | up to 1000 Kg      |
| Glazing                      | 35/45 mm           |
| Thermal insulation           | Polyamides, PVC    |

## Performance

|   |                                   |
|---|-----------------------------------|
| Thermal insulation  |                                   |
| EN ISO 10077-2  | $U_w = 1,1 \text{ W/m}^2\text{K}$ |
| *For dimensions 5,00 x 2,50 m and $U_g = 0,7 \text{ W/m}^2\text{K}$ |                                   |

\* Verzija / Version  
SUPREME S650 ECLIPSE





## Nova veza između transparentne arhitekture i visoke energetske efikasnosti

Podizno-klizni sistem SUPREME S700 predstavlja evoluciju ALUMIL naprednih sistema za projekte sa širokim rasponima i izuzetnim performansama. SUPREME S700 u potpunosti ispunjava moderne trendove "transparentne" arhitekture, kombinacijom velikih staklenih površina, visokom termičkom izolacijom, sigurnošću i modernim dizajnom.

Njegov minimalistički dizajn sa najnovijom tehnologijom čine ga idealnim rešenjem za projekte povećavajući prirodno osvetljenje, zadovoljavajući tako i najizazovnije zahteve.

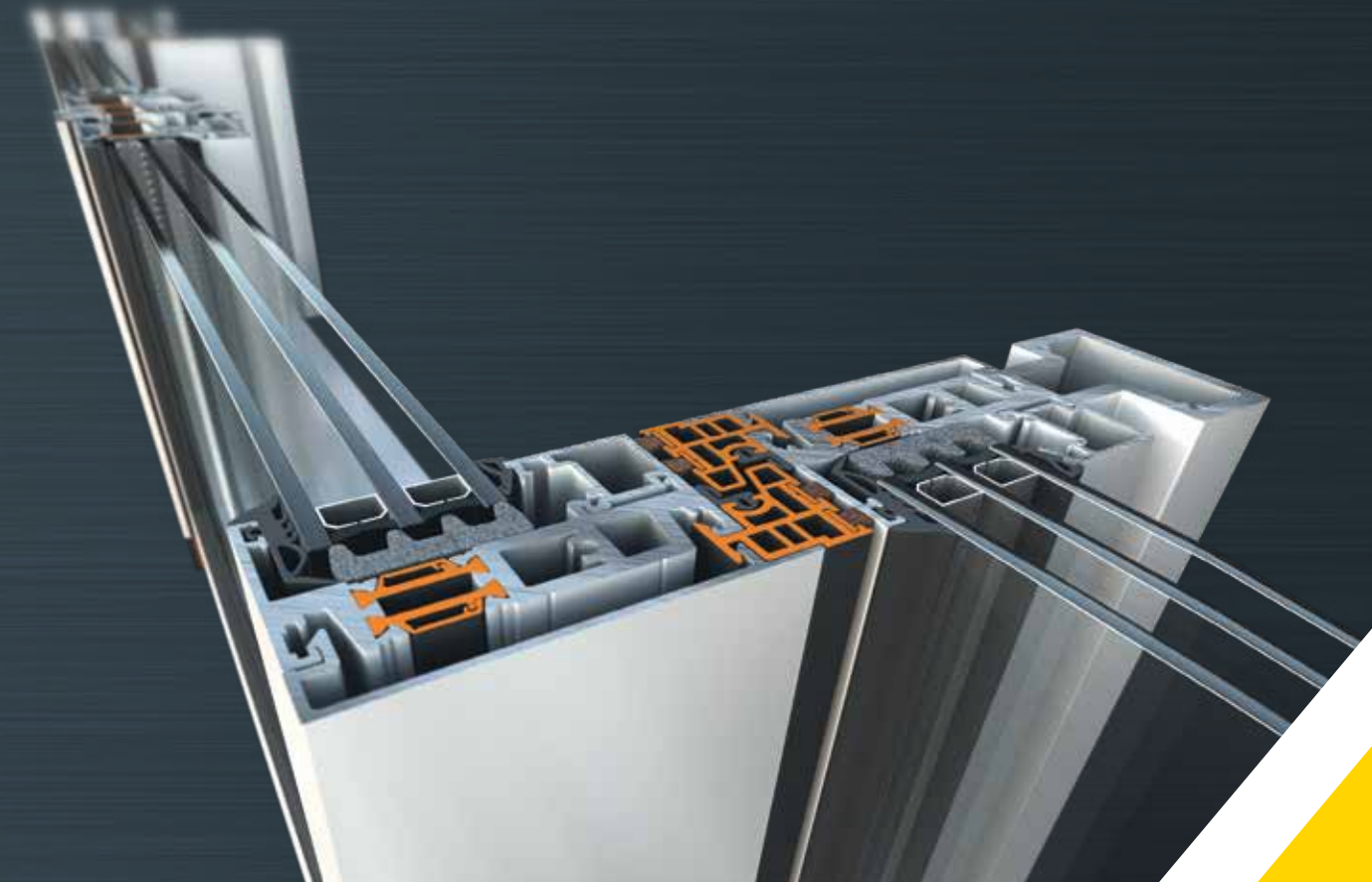
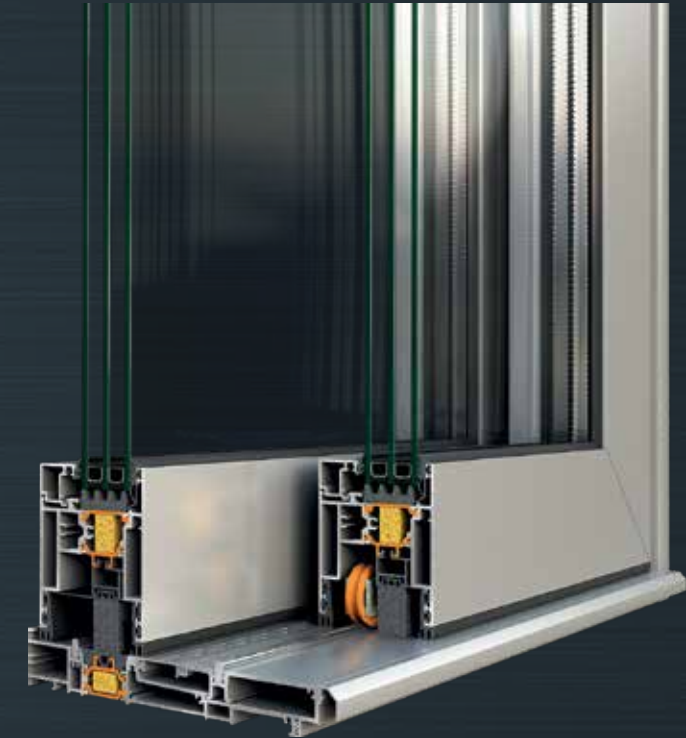
## The combination of transparent architecture and high energy efficiency

The lift & slide system SUPREME S700 represents the evolution of ALUMIL's advanced systems for projects with wide spans and impressive features. SUPREME S700 complies perfectly with the modern trends of "transparent" architecture, combining high thermal insulation, safety and modern design.

Its minimal design along with the state-of-the-art technology make it the ideal solution for projects enhancing natural lighting, satisfying even the most demanding requirements.

# Alumil SUPREME S700

- / Minimalistički i inovativan dizajn sa impresivnom funkcionalnošću.
  - / Širina vidljivog aluminijuma na preklopu krila od samo 47mm za maksimalnu vidljivost i ojačani profili za visine do 3 m.
  - / Inovativni niski prag izuzetne vodonepropustljivosti za lakši pristup.
  - / Visoka energetska efikasnost sa specijalnim antidistorzionim poliamidima za unapređene performanse u slučaju temperaturnih razlika između unutrašnje i spoljašnje sredine.
  - / Pametni sistem drenaže vode sa skrivenim profilima koji garantuju vodonepropustljivost u bilo kojim vremenskim uslovima.
  - / Najelegantnija opcija za automatske podizno-klizne otvore.
- 
- / Basic system's depth 70 mm.
  - / Interlocking face width of only 47 mm for maximum visibility and reinforced profiles for door height of more than 3 m.
  - / Innovative low threshold for easy access and high performance.
  - / Alternative solution for totally concealed in-floor installation, covered with the floor finish (version SUPREME S700 Eclipse).
  - / High energy efficiency with special anti-distortion polyamides, for improved performance when there are high temperature differences between indoors and outdoors.
  - / Smart water evacuation system that guarantees watertightness under any weather condition.



# Alumil SUPREME S700

## Tehničke karakteristike

|                                      |  |
|--------------------------------------|--|
| Vidljiva visina aluminijskih profila | 91 / 115 mm                                |
| Visina rama                          | 24 / 48 / 64 mm                            |
| Širina rama                          | 168,5 mm                                   |
| Visina krila                         | 84 / 95,5 mm                               |
| Širina krila                         | 70 mm                                      |
| Širina preklopnog profila            | 47 / 106 mm                                |
| Nosivost krila                       | do 600 Kg                                  |
| Širina zastakljivanja                | od 22 do 50 mm                             |
| Toplotna izolacija                   | Poliamid, PVC, Energy bar, Izolaciona pena |

## Performanse

|  |                                   |
|--|-----------------------------------|
| Toplotna izolacija<br>EN ISO 10077-2   | $U_w = 1,1 \text{ W/m}^2\text{K}$ |
| *Za dimenzije otvora (Š x V) 5,00 x 2,50 m i $U_g = 0,7 \text{ W/m}^2\text{K}$ |                                   |

## Technical characteristics

|                              |  |
|------------------------------|--|
| Visible aluminium face width | 91 / 115 mm                                |
| Frame height                 | 24 / 48 / 64 mm                            |
| Frame width                  | 168,5 mm                                   |
| Sash height                  | 84 / 95,5 mm                               |
| Sash width                   | 70 mm                                      |
| Interlocking profile width   | 47 / 106 mm                                |
| Sash weight                  | Up to 600 Kg                               |
| Glazing                      | 22 up to 50 mm                             |
| Thermal insulation           | Polyamides, PVC, NRG bars, Insulation foam |

## Performance

|   |                                   |
|---|-----------------------------------|
| Thermal insulation<br>EN ISO 10077-2                                | $U_w = 1,1 \text{ W/m}^2\text{K}$ |
| *For dimensions 5,00 x 2,50 m and $U_g = 0,7 \text{ W/m}^2\text{K}$ |                                   |

\* Verzija / Version  
SUPREME S700 ECLIPSE



Izuzetan sistem sklopivih vrata u jedinstvenom minimalističkom dizajnu sa odličnom termičkom izolacijom i visokim ukupnim performansama

SUPREME SF85 izuzetan je sistem sklopivih vrata sa minimalističkom estetikom, odličnom termičkom izolacijom i mogućnošću stvaranja veoma velikih konstrukcija sa izuzetno uskim vidnim linijama. Njegova najsavremenija dodatna oprema dizajnirana je tako da postigne visoke performanse i jednostavnost korištenja sa donjim klizanjem.

Idealan za ugradnju u privatnim kućama, ali i za konstrukcije visokih performansi i vrhunske namene. Visok stepen fleksibilnosti dizajna (npr. paran ili neparan broj krila, ugaonih konstrukcija i polustrukturalnih varijanti) stvara brojna rešenja koja najefikasnije i najelegantnije zadovoljavaju sve zamislive potrebe korisnika.

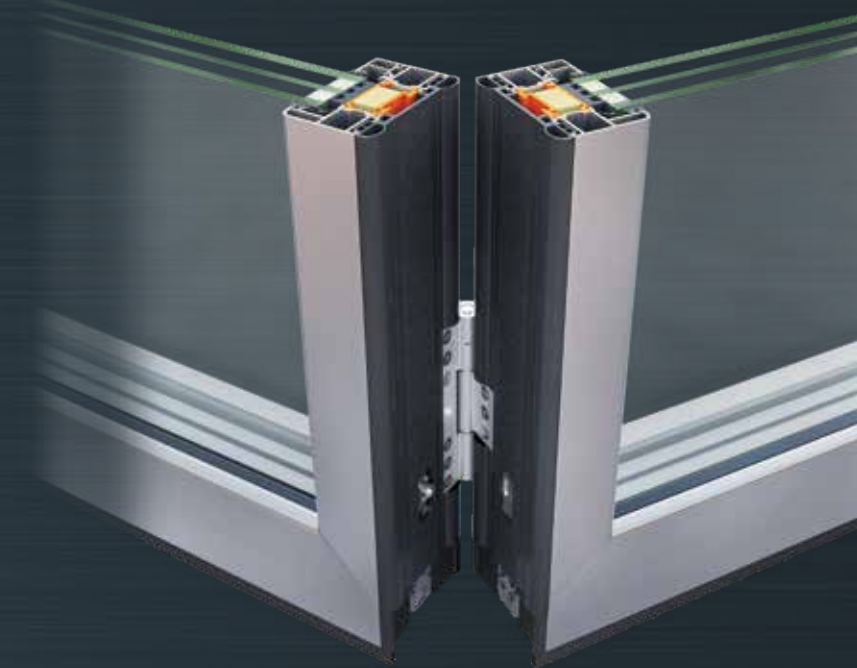
Astonishing folding doors with unique minimal design, excellent thermal insulation and overall performance

SUPREME SF85 is an exceptional folding door system, providing minimal aesthetics, outstanding thermal insulation and the ability to create constructions of very large dimensions and extraordinary low sightlines. Its state-of-the-art fittings are designed to achieve unparalleled performance and a smooth, bottom-slide, operation.

Ideal for flawless residential use as well as for heavy-duty constructions and high-end applications. Its construction flexibility (odd and even number of vents, corner typologies and semi-structural versions), provides numerous solutions, meeting every need in a very effective and elegant way.

# Alumil SUPREME SF85

- / Izuzetno smanjene širine pogleda osiguravaju izvanredan, minimalistički dizajn (105 mm od krila prema krilu).
  - / Sistem omogućava posebno veliku visinu (do 4,0 m), veliku širinu krila (do 1,5 m po krilima) i praktično neograničenu projektovanu dužinu.
  - / Izvanredna termička izolacija za maksimalnu uštedu energije.
  - / Izvanredne performanse u pogledu vodonepropustljivosti, propustljivosti vazduha i otpora na udar vetra.
  - / Povećana sigurnost i zaštita od provalnika, sa zaključavanjem u četiri tačke i protivpodiznim mehanizmom (sertifikovano RC2).
  - / Velika lakoća kretanja i dug vek trajanja.
- 
- / Extremely reduced sightlines offering an excellent minimal design (105 mm sash to sash).
  - / Very large dimensions are possible in terms of maximum height (up to 4 m), sash width (up to 1,5 m per sash) and total construction length (infinite).
  - / Outstanding thermal insulation for maximum energy savings.
  - / Extreme performance in terms of watertightness, air permeability and wind load resistance.
  - / Enhanced safety and anti-burglary protection, with quadruple locking latches and anti-lift roller hinges (RC2 certified).
  - / Ultra-smooth and long-lasting operation.



\* Verzija / Version  
**SUPREME SF85**  
**SEMI-STRUCTURAL**  
sa niskim pragom /  
with low threshold



# Alumil SUPREME SF85

## Tehničke karakteristike

|                                      |  |
|--------------------------------------|--|
| Vidljiva širina aluminijskog profila | 105 mm   |
| Širina krila                         | 85 mm  |
| Nosivost krila                       | do 200 Kg  |
| Širina zastakljivanja                | 20-53 mm standardno<br>34-75 mm polustrukturalno |
| Pokretanje                           | sa donje strane                                  |
| Termička izolacija                   | poliamid 40 mm, Energy bar, izolaciona pena      |

## Performanse

|   |                                   |
|---|-----------------------------------|
| Termička izolacija<br>EN ISO 10077-2  | $U_w = 0,9 \text{ W/m}^2\text{K}$ |
| * Za sklopiva vrata od 3 krila dimenzija 3,9 x 3,5 m<br>i $U_g = 0,6 \text{ W/m}^2\text{K}$ |                                   |

## Technical characteristics

|                              |   |
|------------------------------|---|
| Visible aluminium face width | 105 mm  |
| Sash width                   | 85 mm   |
| Sash weight                  | Up to 200 Kg                                  |
| Glazing                      | 20-53 mm standard<br>34-75 mm semi-structural |
| Operation                    | Bottom slide                                  |
| Thermal insulation           | Polyamides 40 mm,<br>NRG Bar, Insulation foam |

## Performance

|  |                                   |
|--|-----------------------------------|
| Thermal insulation<br>EN ISO 10077-2                                       | $U_w = 0,9 \text{ W/m}^2\text{K}$ |
| *For 3-sash folding door 3,9 x 3,5 m and $U_g = 0,6 \text{ W/m}^2\text{K}$ |                                   |



POLUSTRUKTURALNO



## Pivot ulazna vrata visokog arhitektonskog standarda koji zadovoljavaju i najzahtevnije potrebe

ALUMIL otvara nove horizonte savremenog stambenog i industrijskog dizajna, kroz inovativni dizajn sistema SUPREME SD115 Pivot koji nudi izuzetno velika ulazna vrata kao i izuzetan estetski rezultat sa čistim, minimalističkim dizajnom i koplanarnim površinama.

Sistem pruža izvanredan novi osećaj osvetljenosti i povezanosti između unutrašnjeg i spoljašnjeg okruženja, čineći sistem jedinstvenim po konceptu i dizajnu.

Inovativni dizajn sistema, uz najmoderniju opremu, osigurava preduslove za prestižna ulazna vrata visoke estetike, izuzetnog kvaliteta i izvanrednih performansi u pogledu sigurnosti, izolacije i funkcionalnosti.

- / Pivot šarke sa podesivim klinovima.
- / Maksimalna sigurnost sa sertifikovanom otpornošću na provalu RC3.
- / Maksimalna energetska efikasnost sa visokim koeficijentom termičke izolacije  $U_d = 0,7 \text{ W/m}^2\text{K}$ .
- / Visok stepen termičke izolacije sa posebnim antidistorzionim poliamidima 34 mm, za poboljšane performanse u slučaju velikih temperaturnih razlika između unutrašnjeg i spoljašnjeg prostora.
- / Perimetrijsko zaptivanje sa središnjom gumom i 3 nivoa EPDM dihutnga.
- / Koplanarnost između zida, okvira i krila.
- / Olakšan pristup sa posebnim pragom od 7 mm.
- / Integrisana spoljašnja ručica.

## Pivot entrance doors of high architectural standards that meet even the most demanding needs

ALUMIL creates new horizons for modern residential and industrial design thanks to the innovative SUPREME SD115 Pivot system that offers extremely large entrance doors and an exceptional aesthetic result with a pure, minimalist design and coplanar surfaces.

The SUPREME SD115 Pivot system creates a new feeling of brightness and connection between internal and external environments, rendering the system unique in concept and design.

The system's innovative design, alongside the state-of-the-art equipment, provides the prerequisites for prestigious entrance doors with high aesthetics, exceptional quality and outstanding performance in terms of security, insulation and functionality.

- / Pivot hinge with adjustable pins.
- / Maximum safety with RC3 certified burglar resistance.
- / Maximum energy efficiency with high thermal insulation coefficient  $U_d = 0,7 \text{ W/m}^2\text{K}$ .
- / High levels of thermal insulation with special anti-distortion polyamides of 34 mm, for improved performance in case of high-temperature differences between indoors and outdoors.
- / Perimetrical sealing with central gasket and 3 levels of EPDM gaskets.
- / Co-planarity between wall, frame and sash.
- / Easy access with a special 7 mm low threshold.
- / Integrated recessed external handle.

# Alumil SUPREME SD 115 PIVOT

## Tehničke karakteristike

|                      |  |
|----------------------|--|
| Širina okvira        | 115 mm   |
| Širina krila         | 115 mm   |
| Težina krila         | do 250 Kg  |
| Debljina panela      | 115, 120.5 i 126 mm  |
| Maksimalne dimenzije | 2 x 3 m  |
| Toplinska izolacija  | Poliamidi širine 34 mm,<br>PE Izolaciona pena i Energy bar |

## Performanse

|   |                                    |
|---|------------------------------------|
| Termička izolacija<br>EN ISO 10077-2                                  | $U_d = 0,73 \text{ W/m}^2\text{K}$ |
| *Za vrata dimenzija 1.30 x 2.50 m i $U_p = 0,3 \text{ W/m}^2\text{K}$ |                                    |

## Technical characteristics

|                    |   |
|--------------------|---|
| Frame height       | 115 mm  |
| Sash width         | 115 mm  |
| Sash weight        | up to 250 Kg  |
| Panel thickness    | 115, 120.5 and 126 mm                                   |
| Maximum dimensions | 2 x 3 m (W x H)   |
| Thermal insulation | Polyamides 34 mm width,<br>PE Insulation foam & NRG Bar |

## Performance

|  |                                    |
|--|------------------------------------|
| Thermal insulation<br>EN ISO 10077-2                                     | $U_d = 0,73 \text{ W/m}^2\text{K}$ |
| *For door dimensions 1,30 x 2,50 m and $U_p = 0,3 \text{ W/m}^2\text{K}$ |                                    |







## Ulazna vrata visokih arhitektonskih standarda, estetike i performansi

Sistem SUPREME SD95 pripada ALUMIL-ovoj seriji za ulazna vrata visokog kvaliteta. Sistem uključuje kompletan asortiman profila sa termo prekidom, ravnih linija za potpuno koplanarne konstrukcije koje nude visoku funkcionalnost.

Uz mnoge opcije ispuna uključujući aluminijumske panele ili staklo, SUPREME SD95 je dizajniran u skladu sa najzahtevnijim arhitektonskim trendovima i stilovima.

- / Maksimalna energetska efikasnost sa visokim koeficientom toplotne izolacije  $U_d < 1,0 \text{ W/m}^2\text{K}$ .
- / Visoka energetska efikasnost sa specijalnim antidistorzionim poliamidima za unapređene performansi u slučaju temperaturnih razlika između unutrašnje i spoljašnje sredine.
- / Maksimalna vodonepropustljivost sa specijalno dizajniranim gumama i 3 stepena zaptivanja sa EPDM gumama.
- / Veliki izbor sigurnosnih brava i šarki (skriveno, vidljive, nadgradne).
- / Savršeno se kombinuje sa prozorima iz serije SUPREME S91.

## Entrance doors of high architectural standards, aesthetics and performance

The SUPREME SD95 system is ALUMIL's series for entrance doors of high-quality standards. The system includes a complete range of thermal break profiles with a flat design for totally aligned constructions that offer high functionality.

Offering many glazing options including aluminium panels or glazing, the SD95 is designed according to the most demanding architectural trends and aesthetics.

- / Maximum energy efficiency with high thermal insulation coefficient  $U_d < 1,0 \text{ W/m}^2\text{K}$ .
- / High levels of thermal insulation with special anti-distortion polyamides, for improved performance in case of high-temperature differences between indoors and outdoors.
- / Maximum watertightness with special design of central gasket and 3 sealing levels with EPDM gaskets.
- / Wide variety of security locks and hinges (concealed, barrel or surface mounted).
- / Combined perfectly with the hinged SUPREME S91 window series.

# Alumil SUPREME SD95

## Tehničke karakteristike

|                                     |   |
|-------------------------------------|---|
| Minimalna vidljiva visina           | 161,4 mm  |
| Širina rama                         | 95 mm   |
| Širina krila                        | 95 mm   |
| Minimalna vidljiva širina T-profila | 106,4 mm  |
| Nosivost mehanizma krila            | do 220 Kg   |
| Zastakljivanje                      | od 24 do 54 mm  |
| Toplotna izolacija                  | Poliamid širine 34 mm,<br>PE izolaciona pena i Energy bar |

## Performanse

|   |                                    |
|---|------------------------------------|
| Toplotna izolacija  |                                    |
| EN ISO 10077-2  | $U_d = 0,75 \text{ W/m}^2\text{K}$ |
| *Za vrata dimenzija (Š x V) 1,30 x 2,30 m i $U_p = 0,3 \text{ W/m}^2\text{K}$ |                                    |

## Technical characteristics

|                                 |   |
|---------------------------------|---|
| Minimum visible width           | 161,4 mm  |
| Frame depth                     | 95 mm   |
| Sash depth                      | 95 mm   |
| Minimum visible width T-profile | 106,4 mm  |
| Sash mechanism weight limit     | Up to 220 Kg  |
| Glass thickness                 | 24 up to 54 mm  |
| Thermal insulation              | Polyamides 34 mm width,<br>PE Insulation foam & NRG Bar |

## Performance

|  |                                    |
|--|------------------------------------|
| Thermal insulation   |                                    |
| EN ISO 10077-2   | $U_d = 0,75 \text{ W/m}^2\text{K}$ |
| *For door dimensions 1,30 x 2,30 m and $U_p = 0,3 \text{ W/m}^2\text{K}$ |                                    |



# Alumil > Handles

Kompletan set ručica sa ALUMIL logom odlikuju se elegantnim ravnim linijama u skladu sa najnovijim trendovima u arhitekturi.

Idealna opcija za SUPREME seriju, zadovoljavajući sve tehničke zahteve, ujedno prateći isti vrhunski standard kvaliteta.

ALUMIL ručice dostupne su u širokom spektru boja.

Complete set of handles with ALUMIL's signature, characterized by elegant clear lines in accordance with the latest architectural trends.

An ideal option for the SUPREME series, covering all technical applications, whilst following the same high-quality standards.

ALUMIL handles are available in a wide range of colours.





**Privatna vila** Atina, Grčka

**Ska vila Lagos** Nigerija

Referentni  
projekti  
Reference  
Projects

**Mriya Hotel** Krim

**Vancouver House** Vankuver, Kanada

**W Hotel** Dubai, UAE

**Mayia Exclusive Resort & Spa** Rodos, Grčka

**ALUMIL YU INDUSTRY A.D.**

Vojački put 3  
22330 Nova Pazova  
Tel: 022 321 302  
Fax: 022 321 244  
E-mail: alumilyuindustry@alumil.com

**PROJEKTNI BIRO  
- IZLOŽBENI SALON**

GTC SQUARE  
Milutina Milankovića 11b  
11070 Novi Beograd  
Tel.: 011 614 92 10  
Fax: 011 614 92 11  
E-mail: projektbiro@alumil.com

**PRODAJNI CENTRI:**

**BEOGRAD-ZEMUN**

Autoput za Novi Sad 221  
11080 Zemun  
Tel: 011 377 48 21  
Fax: 011 377 48 22  
E-mail: zemun@alumil.com

**BEOGRAD-JUG**

Bosanska 51  
11050 Zvezdara  
Tel: 011 289 11 41  
Fax: 011 288 76 31  
E-mail: beograd-jug@alumil.com

**JAGODINA**

Kablovska bb  
35000 Jagodina  
Tel: 035 88 20 777  
Fax: 035 88 20 778  
E-mail: jagodina@alumil.com

**NOVI SAD**

Đakona Avakuma 53,  
21000 Novi Sad  
Tel: +381 21 557 667  
Fax: +381 21 524 860  
E-mail: novisad@alumil.com

**ČAČAK**

Dragoslava Bojovića 586  
32212 Preljina - Čačak  
Tel/Tax: 032 320 480, 320 490  
E-mail: cacak@alumil.com

**NIŠ**

Toponički put bb  
18000 Niš  
Tel: 018 45 83 090  
Fax: 018 45 83 092  
E-mail: nis@alumil.com

**ALUMIL MONTENEGRO**

Mahala bb  
20000 Podgorica  
Tel/Fax: +382 20 872 104  
E-mail: alumil.cg@t-com.me

**ALUMIL SKOPJE**

Boris Trajkovski 74A  
1000 Skopje  
Tel: +389 2 2460 350  
Fax: +389 2 2466 200  
E-mail: info.skopje@alumil.com

**BH ALUMINIJUM**

Njogoševa bb  
75440 Vlasenica  
Tel: +387 56 733 750  
Fax: +387 56 733 196  
E-mail: info@alumil.ba

**ALUMIL ZAGREB**

Sarajevska cesta 52  
Zagreb  
Tel: +385 1 660 76 10  
Fax: +385 1 660 77 21  
E-mail: info@alumil-zagreb.hr