

Aluminium elegance at first sight

FC10, FC60, and FC80: Three versatile fencing systems to elevate your surroundings



Key Benefits

- / Vast selection of design patterns and unlimited customization possibilities.
- / Exceptional robustness and durability against harsh weather conditions and intense wind loads.
- / Oversized dimensions to meet special project needs, particularly for gates requiring unobstructed vehicle passage.
- / Unmatched aesthetics, detailed design, and complex technical solutions made entirely of aluminium.
- / High levels of innovation with modern techniques and materials, smart combinations, and unique constructions.

OUTDOOR SOLUTIONS

Create a unique outdoor living experience through ALUMIL's holistic approach.



**HEAD OFFICES
& SHOWROOM - THESSALONIKI**
GOGOUSI 8, EFKARPIA
THESSALONIKI - GR 56429
TEL.: +30 2313 011000
E-MAIL: info@alumil.com

OFFICES & SHOWROOM - ATHENS
TATOIOU AVENUE 67, ACHARNES
ATHENS - GR 13677
TEL.: +30 210 6298100
EMAIL: athina@alumil.com

HEADQUARTERS & FACTORY
KILKIS INDUSTRIAL AREA
KILKIS - GR 61100
TEL.: +30 23410 79300
EMAIL: info@alumil.com

Alumil

www.alumil.com

Alumil

SMARTIA
Fences & Gates

SMARTIA
FC80



SMARTIA
FC60

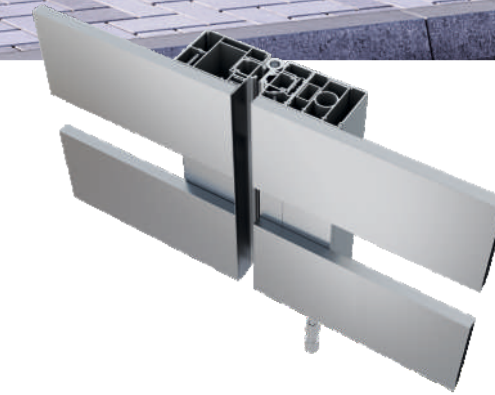
SMARTIA
FC10

Elevate your home's entryway with our exclusive **barcode-inspired aluminium gate**, designed for timeless elegance.

ALUMIL offers three advanced fencing systems, each featuring a unique method of louver attachment.

The systems provide multiple options for high-performance fences and gates that surround your space in the most elegant way.

- Options to place louvers vertically or horizontally, either attached or inlaid between the mullions.
- Aluminium louvers can be combined with other materials such as composite wood, glass, perforated aluminium sheets, and more.
- Large hinged and sliding gates, fully automated with various design proposals.
- Aluminium profiles replace concrete posts and steel structures, eliminating issues with paint, rust, and maintenance.



Embrace the modern allure of aluminium

SMARTIA FC60 is an aluminium fencing system featuring horizontally attached louvers of your choice on the posts. It delivers a seamless, minimalistic, and aesthetically pleasing result, making it an ideal upgrade for hotels, residences, maisonettes, and more.

The series is renowned for its durability, accommodating large construction dimensions and providing a range of gate options, including single and double-sash hinged and sliding gates.

Key Benefits

- Exceptional, minimal, and seamless design with concealed fixing points.
- Extensive range of solutions and design options, particularly for aluminium louvers.
- Unique combinations with composite wood materials, such as the hybrid WOODALUX louvers.
- Superior robustness and possibility for large spans.
- Designed for easy construction and installation.



SMARTIA FC80 is a sophisticated fencing system available in a variety of forms and configurations. It offers a wide range of technical and aesthetic solutions, making it an invaluable tool for architects and an essential component of any fencing project. It excels in meeting special demands with its main features including inlaid infill installation between posts and a diverse selection of decorative materials.

Moreover, the system is distinguished by its exceptional strength and durability, boasting reinforced profiles and heavy-duty accessories. This allows for wider post spacing and the creation of significantly larger gates that deliver long-lasting performance.



120 mm & 250 mm posts and special pivot hinges for very large spans (up to 6 m width) and 100% aluminium result (no need for concrete posts).



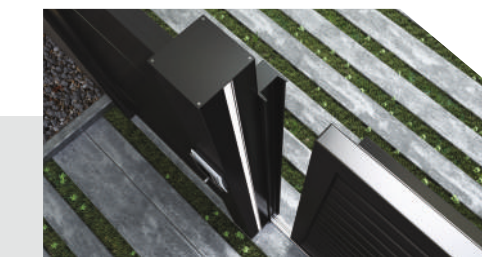
A great variety of smart profiles, different materials, and multiple lighting options allow for unlimited customization.

Smart technical solutions & unlimited decorative combinations

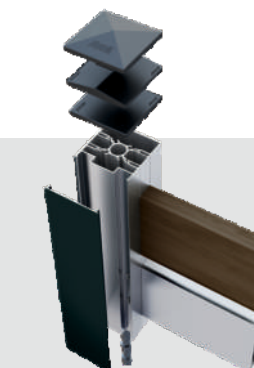


Key Benefits

- Superior robustness ideal for large-scale constructions, particularly gates facilitating vehicle passage (up to 6.0 m span).
- Ability to create "blind" surfaces without spacing, eliminating wind load issues (over 2.0 m height).
- High customization levels, leveraging an extensive range of profiles and technical solutions.
- High innovation and differentiation through advanced materials like WOODALUX, smart frames, diverse lighting options, and oversizing.
- Substitution of typically required concrete elements (mullions, shadings) with aluminium profiles.



Sliding gate is available as an alternative to the hinged gate (with one or two leaves), offering top reliability and full automation.



Variety of decorative post caps (pyramid, triangle or flat style) available in long-lasting colors.



A unique proposal for an exceptionally minimal appearance

ALUMIL enhances its fencing solutions with **SMARTIA FC10**, featuring a distinctive and minimalist design defined by clean vertical lines.

The system offers an alternative to steel constructions for linear fences and gates, providing durability without the coating, corrosion, and maintenance concerns typically associated with steel.

Key Benefits

- Unique style rarely seen in aluminium fencing.
- Exceptional results when paired with WOODALUX bars and Barcode profiles.
- Effective replacement for traditional steel constructions.
- Long fencing constructions with excellent stability and minimal wind-load concerns.
- Clever and discreet louver connections, especially at the top, ensuring a seamless appearance.