



Alumil
Building excellence every day

Alumil  **SUPREME**
S500 PHOS



CONTENTS

SUPREME S500

OVERVIEW	2
DESIGN PHILOSOPHY AND KEY FEATURES	4
SENSE OF FREEDOM	8
THE ULTIMATE MINIMAL DESIGN	10
DEFYING GRAVITY: THE REVOLUTION IN WINDOWS TECHNOLOGY	12
ATTENTION TO DETAIL	14
FOCUS ON SAFETY	16
SECTIONS	20
INSTALLATION	32
APPLICATIONS	40
TABLE OF PERFORMANCE	41



The **SUPREME S500 PHOS** sets new standards for minimalism with its clear, symmetrical lines, impressive functionality and implementation of advanced technology.

PHOS means **LIGHT**

"Light is not so much something that reveals, as it is itself the revelation."

The Art of Luxury Living

Alumil SUPREME
S500 PHOS

Discover perfection in ALUMIL's
thermally insulated sliding system
SUPREME S500 PHOS,

DESIGN PHILOSOPHY

where **minimalist aesthetics** combine with
exceptional functionality.

AND KEY FEATURES

- **Patented magnetic technology** for sliding aluminium systems offers limitless dimensions and typologies using the version **SUPREME S500 SlideAir**.
- Guaranteed ease in sliding sashes weighing up to 1 000 Kg, without the need for power supply or additional space to install magnetic technology.
- Certified durability, delivering unmatched resilience in highly corrosive environments.
- Minimal design with concealed profiles and clear, symmetrical lines for maximum natural light.
- Narrow interlocking profile of only 25 mm face width for unobstructed views.
- Easy and safe access with the **Eclipse version**, with a fully concealed bottom track covered with the floor finish, providing a flat surface.
- Ultimate minimal design in the **Total Eclipse version**, with all tracks covered by the ceiling, floor, and walls, resulting in a seamless appearance.



Alumil SUPREME
S500 PHOS



TECHNICAL

CHARACTERISTICS



VISIBLE ALUMINIUM FACE WIDTH	29 mm
FRAME HEIGHT	103 mm
FRAME WIDTH	210 mm
SASH HEIGHT	29 / 32 mm
SASH WIDTH	50 mm
INTERLOCKING PROFILE WIDTH	25 mm
SASH WEIGHT	1000 Kg
GLAZING	36-40 mm
INSULATION	POLYAMIDES, ABS

Alumil > SUPREME
S500 PHOS

Enjoy an
unobstructed view and
abundant **natural light**

with just **25mm** of visible
aluminium at the interlocking profile.

SENSE

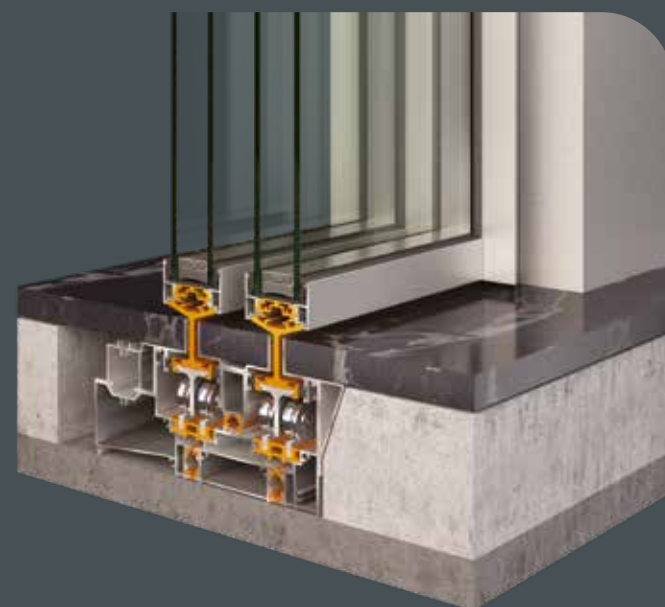
OF FREEDOM

The system presents a **symmetrical view** of aluminium around the glazing panel, featuring a similar width to the interlocking profile. This enhances uniformity in appearance, elevating any space's overall elegance and aesthetic appeal.



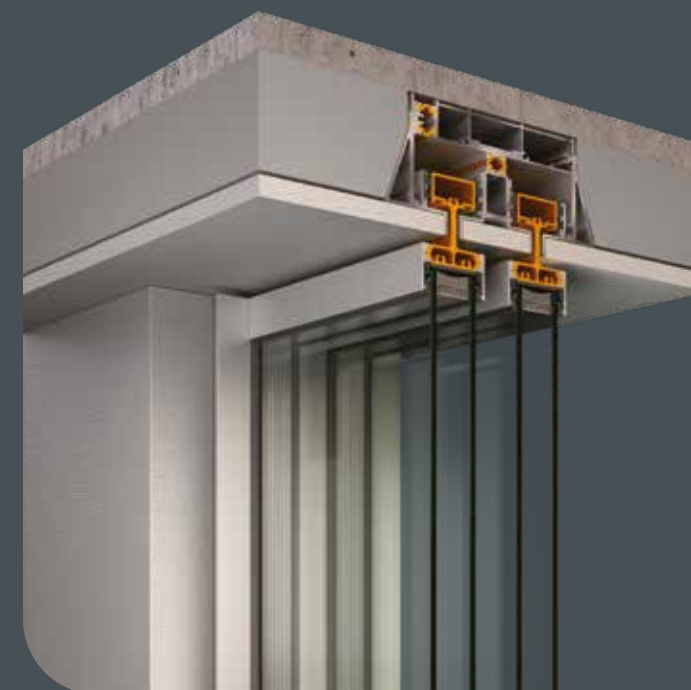
Alumil SUPREME
S500 ECLIPSE

In the **Eclipse version**, the bottom track is recessed into the floor, fully covered by the floor finish. This design creates a flat surface that ensures effortless and secure access while establishing a seamless connection between indoor and outdoor spaces.



THE ULTIMATE

MINIMAL DESIGN



For those who crave the purest form of minimalism, the **Total Eclipse version** eliminates any visible tracks in a closed position. Even the top and side tracks are cleverly hidden within the ceiling and the wall finish, enhancing the overall aesthetics.

Alumil > SUPREME
S500 SlideAir

Experience ultimate ease in operation with the **SUPREME S500 SlideAir™** version.

DEFYING GRAVITY:

THE REVOLUTION IN WINDOWS TECHNOLOGY

The revolutionary design with patented **magnetic technology** offers **effortless gliding** of the sashes.



This technology can apply to any project using the **same profiles as the standard version**. The technology offers **endless design possibilities** without constraints on sash dimensions, aligning with contemporary project demands and individual preferences. To apply the technology, **no power supply is required**.

The state-of-the-art technology, along with the expertise of Alumil, guarantees **high-quality constructions** through easy and safe installation.

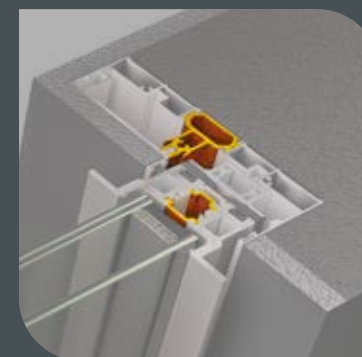


Alumil SUPREME
S500 PHOS



ATTENTION

The specially designed **fiberglass-reinforced polyamides** for sash and track profiles deliver **exceptional thermal insulation** performance.



The innovative design of the **sash base fiberglass-reinforced polyamide** ensures thermal break between indoors and outdoors and guarantees outstanding material durability.



The specially designed **glass setting blocks** offer stability and balance to the glazing panel while making the fabrication easier and faster.

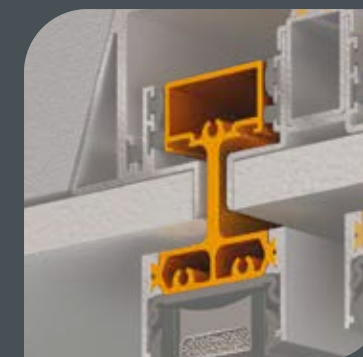


Including **sash gaskets on the locking side of the sash** enhances sealing performance and is also used as a shock absorber during closer.



TO DETAIL

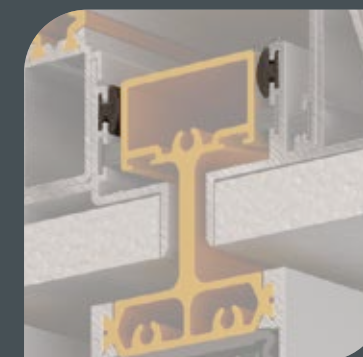
The ingenious design of the **upper sash polyamide** (Total Eclipse version) contributes to the stability and alignment of the sash.



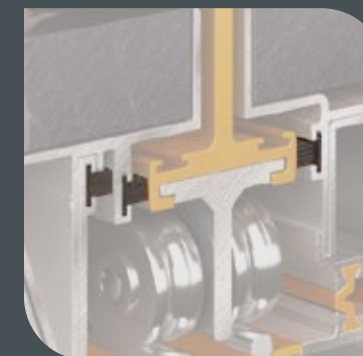
The environmentally friendly profiles, made of **durable thermoplastic material**, contribute to superior thermal insulation at the interlocking profile.



The addition of **sash spacers at the upper track** contributes to the alignment of the sliding sash for flawless operation.



High-quality brushes, in standard and tri-fin versions around the sash perimeter, elevate air permeability and watertightness.



Alumil SUPREME
S500 PHOS

FOCUS

ON SAFETY

Locking system

The Alumil-designed **locking system guarantees elevated security** during operation through the incorporation of several key features:

- Multiple locking points for enhanced security.
- Stainless steel adjustable locking pin heads for flexibility and durability.



- Wrong operation safety device for preventing misuse and improper operation.
- Soft close device for a gentle, secure and noiseless closure of the sashes.

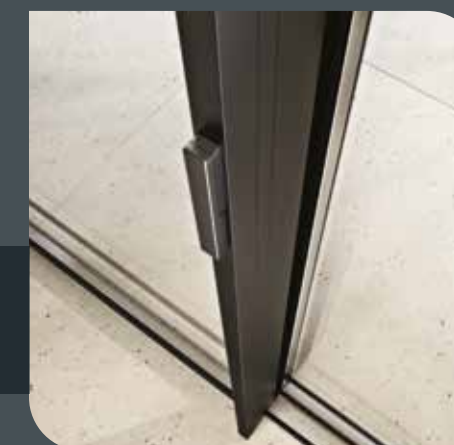
The locking mechanism is tested in a **durability test for 20.000 cycles** and a **mishandling test for 20.000 cycles**.

Handles

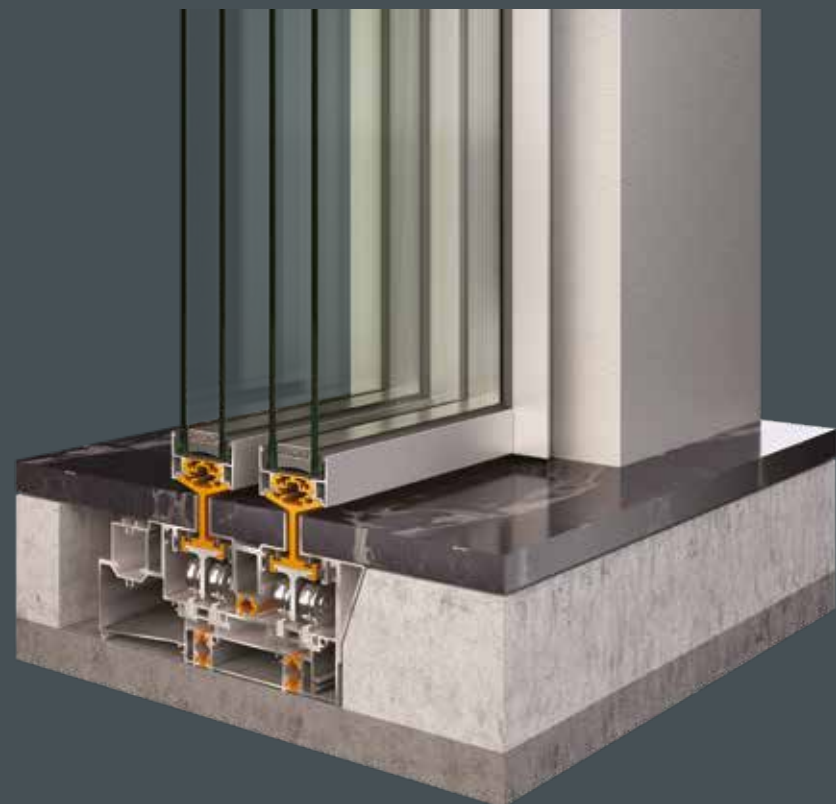
The **full-height profile handle** not only offers a symmetrical, clean-lined appearance that enhances the overall aesthetics but also a comfortably sized surface for effortless grasping and smooth sash operation.

The **Alumil-designed locking controller**, with the same finish as the profiles, is discreetly integrated into the handle profile. In the closed position, it aligns perfectly with the straight lines of the design, creating a seamless and elegant appearance. Moreover, the controller can be easily detached for maintenance.

Alternative version: Flawless aesthetics maintained with the minimal lock handle on the narrow 25 mm interlocking profile.



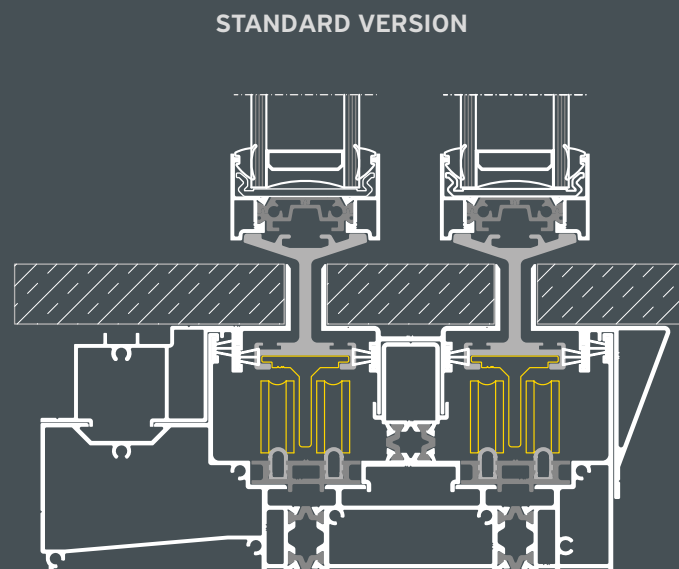
Alumil SUPREME
S500 PHOS



Rollers & Inox Guide Rail

The heavy-duty **inox guide rail** (AISI 316L), in cooperation with the **stainless-steel rollers** placed under the sash, ensures exceptional functionality and long-lasting performance. The middle part of the bottom track is conveniently removable to allow access to the rollers in case of maintenance.

The rollers are engineered for heavy-duty constructions up to 1000 Kg per sash and have certified performance, tested according to EN 13126-15 and EN 1670 for corrosion resistance and durability.



FOCUS

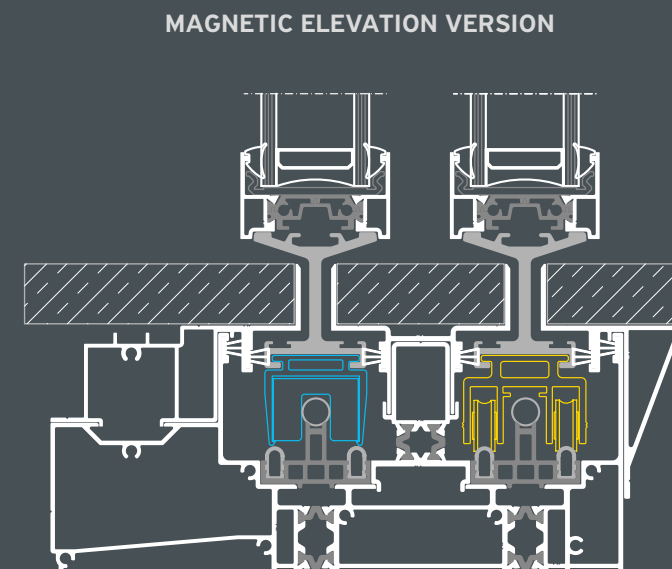
ON SAFETY

SlideAir™ Technology

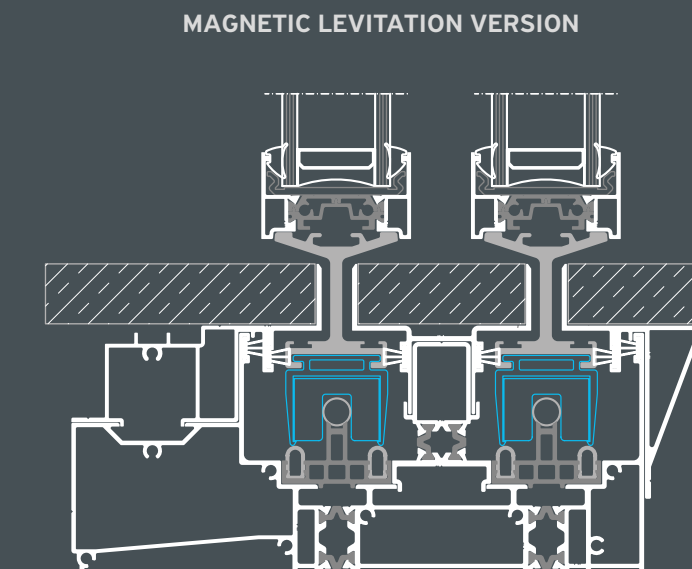
The **magnetic suspension** is achieved through **magnets** placed under the sash. The magnetic field is totally confined inside the magnet section, eliminating external magnetic dispersions.

The patented magnetic technology:

- guarantees operational force of **2 Kg for sash weight 600Kg**
- provides corrosion resistance in salt spray environment
- is tested for durability in cycling test

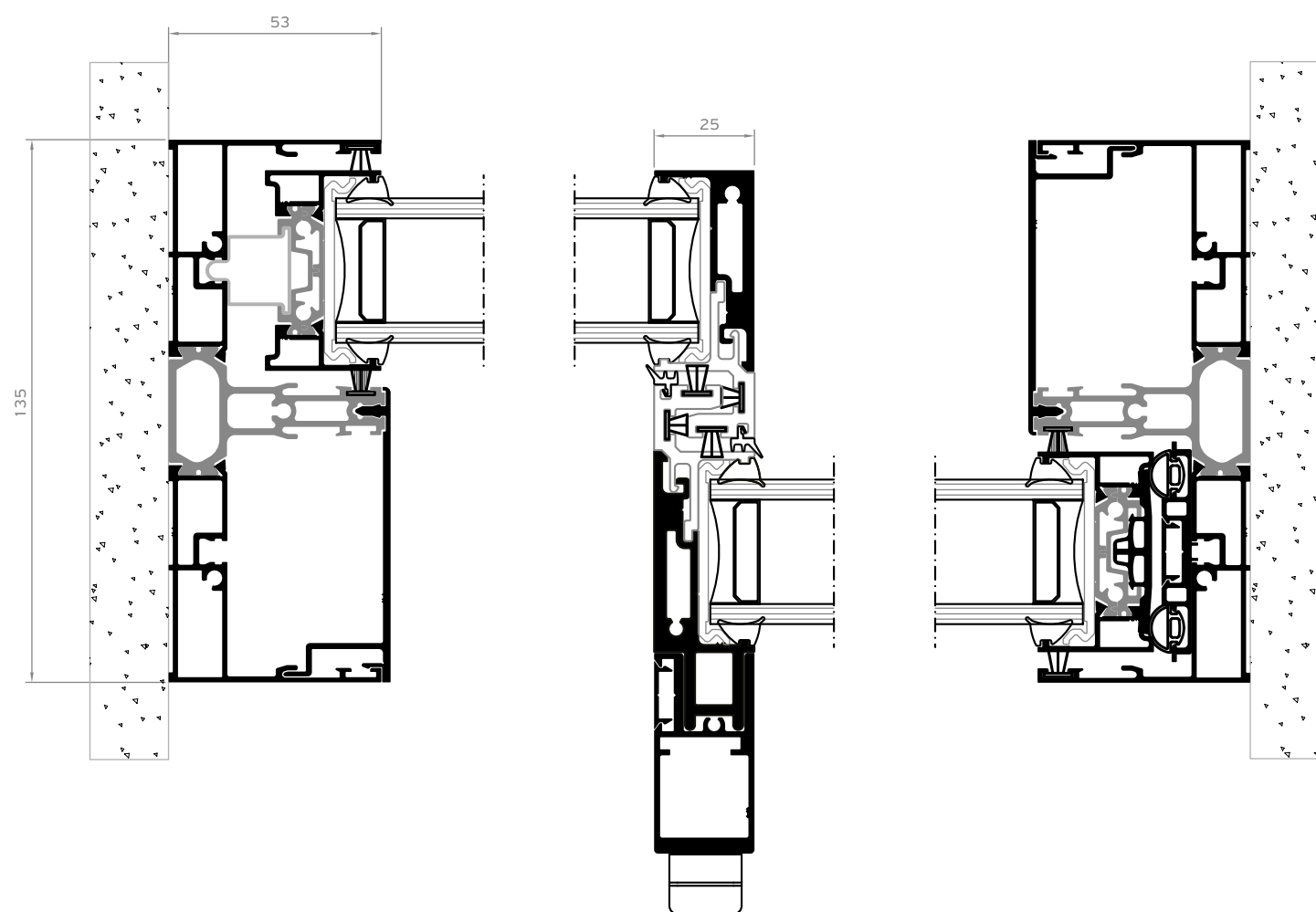
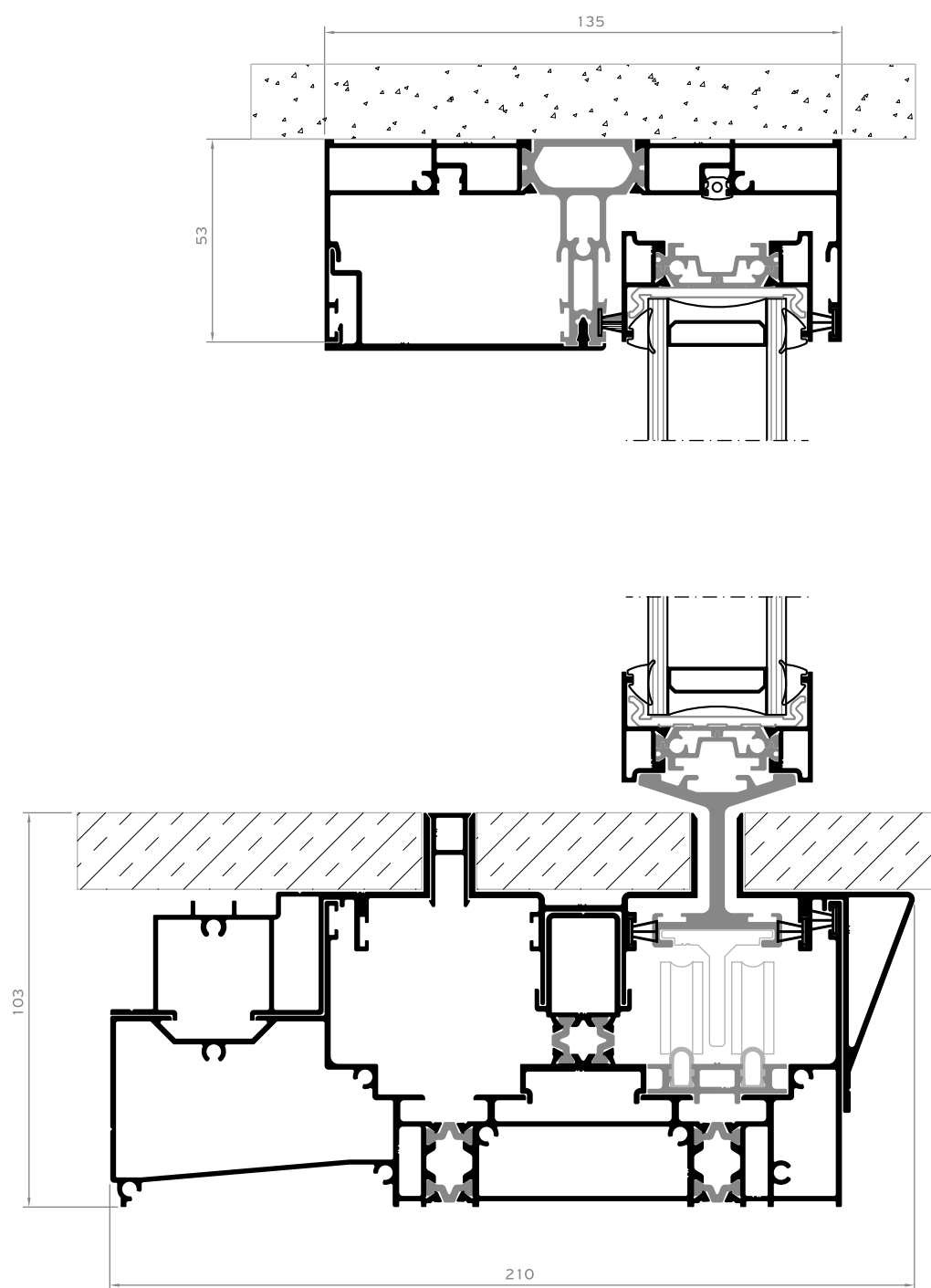
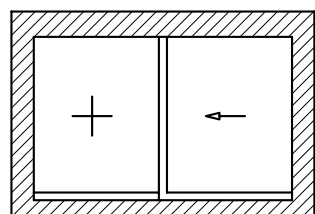


With the **magnetic elevation**, the rollers and magnets cooperate to support the full weight of the sash, offering **easy operation even for very heavy sashes**.

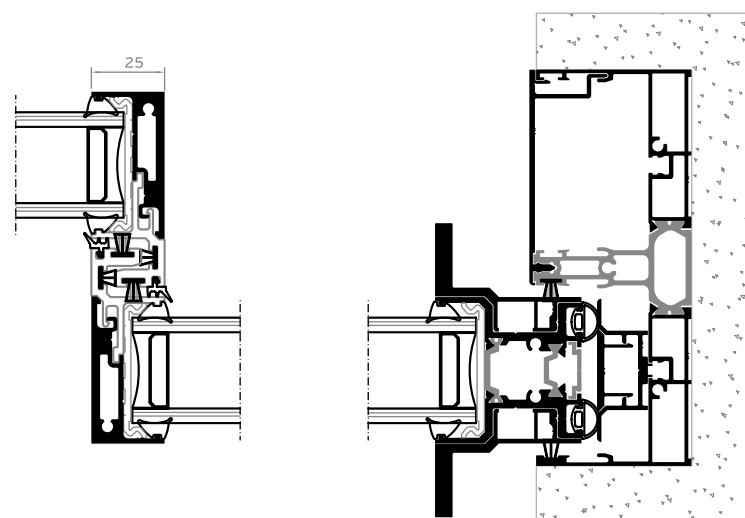
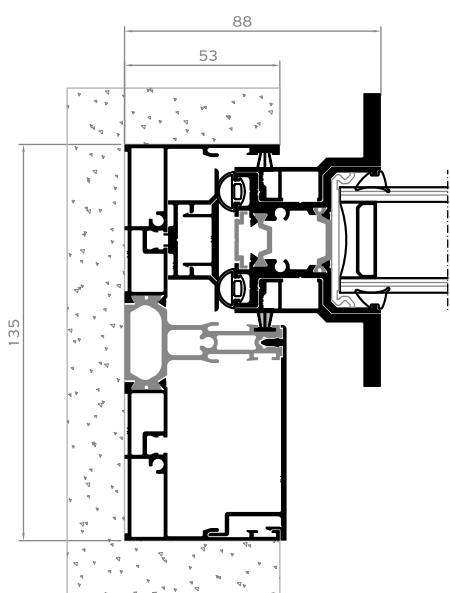
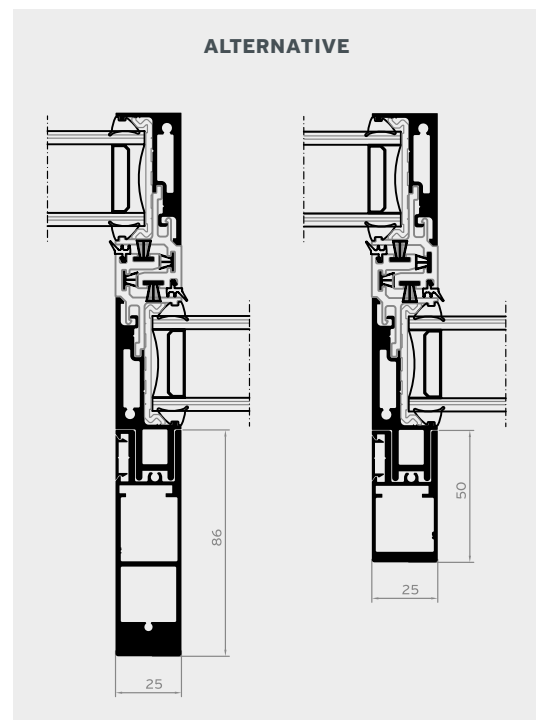
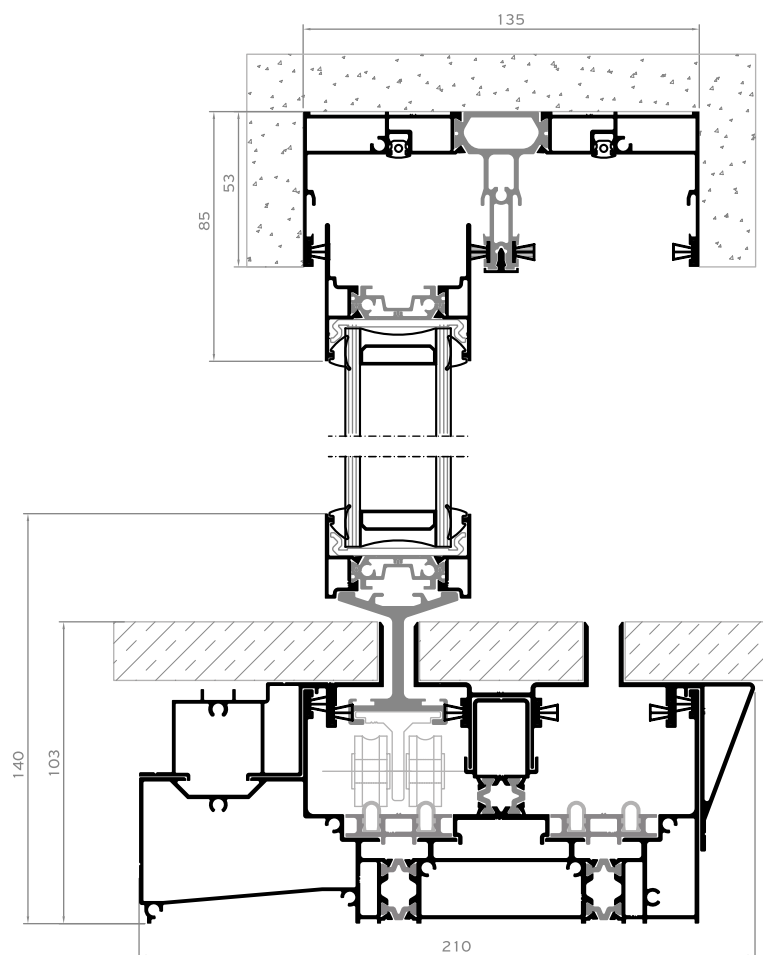
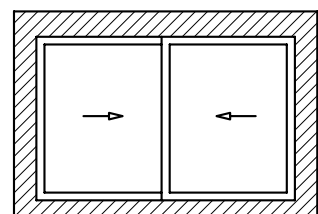


With **magnetic levitation**, the magnets fully support the weight of the sash, ensuring **smooth operation** and **long-lasting functionality**, even in highly corrosive environments.

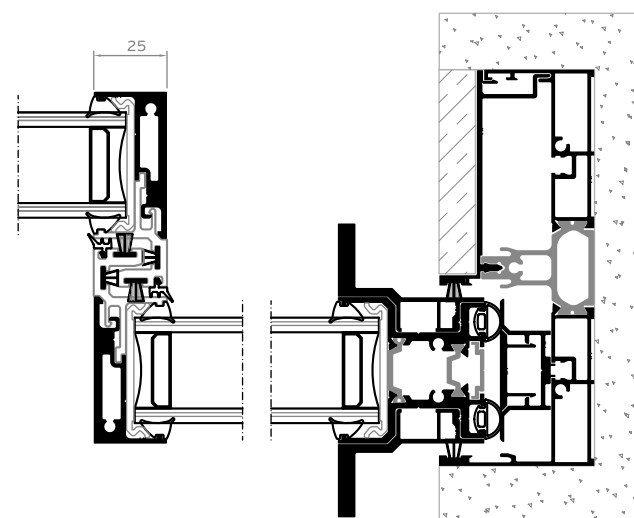
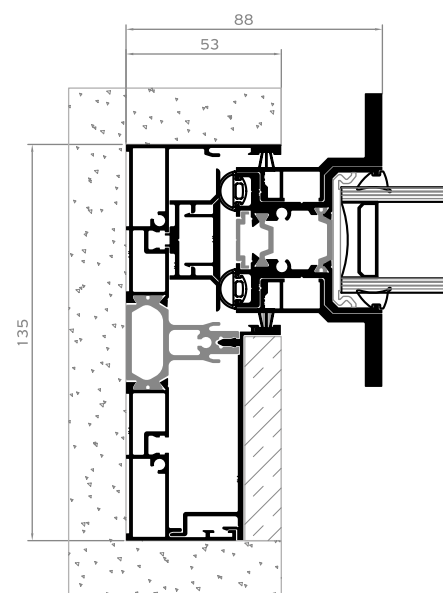
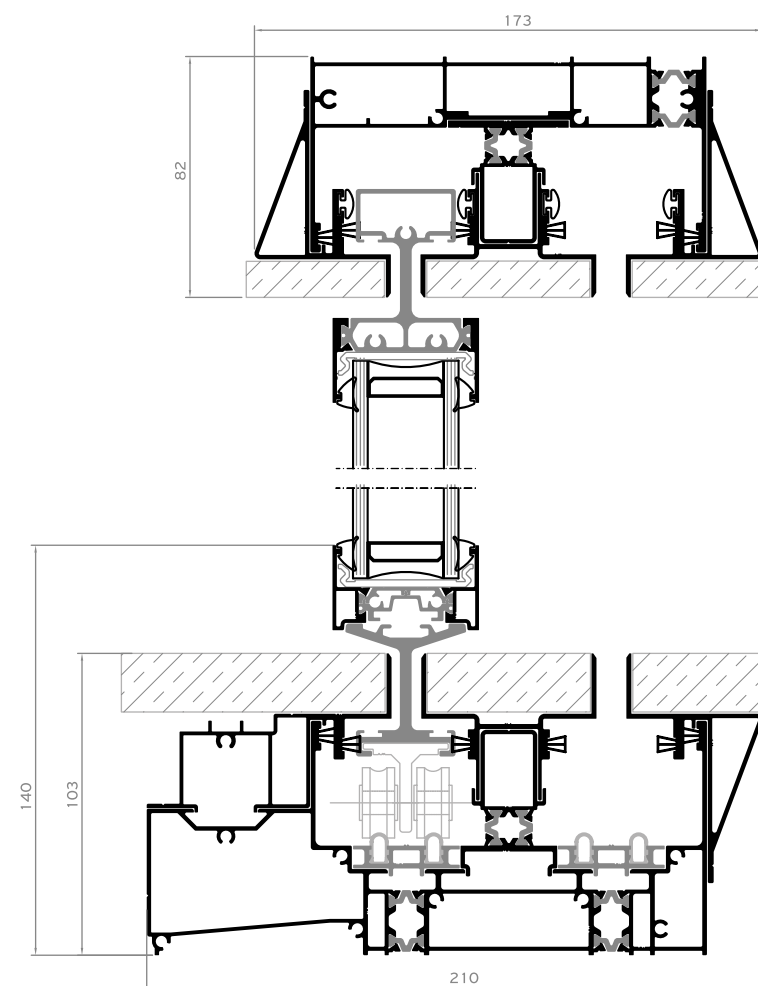
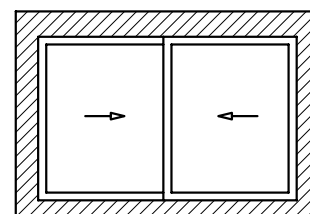
1 Sash / 1 Fixed Concealed Sashes



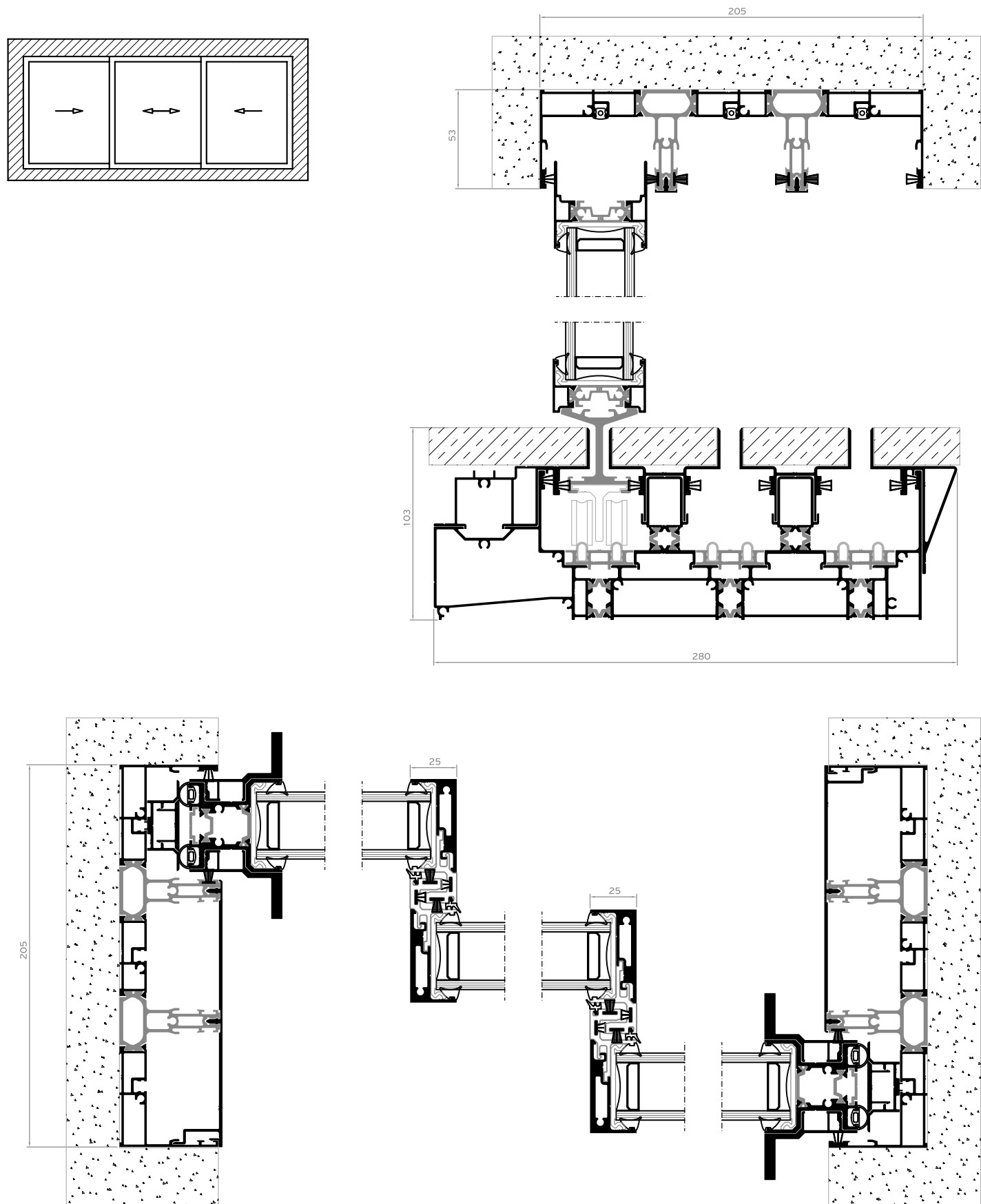
2 Sashes / 2 Track



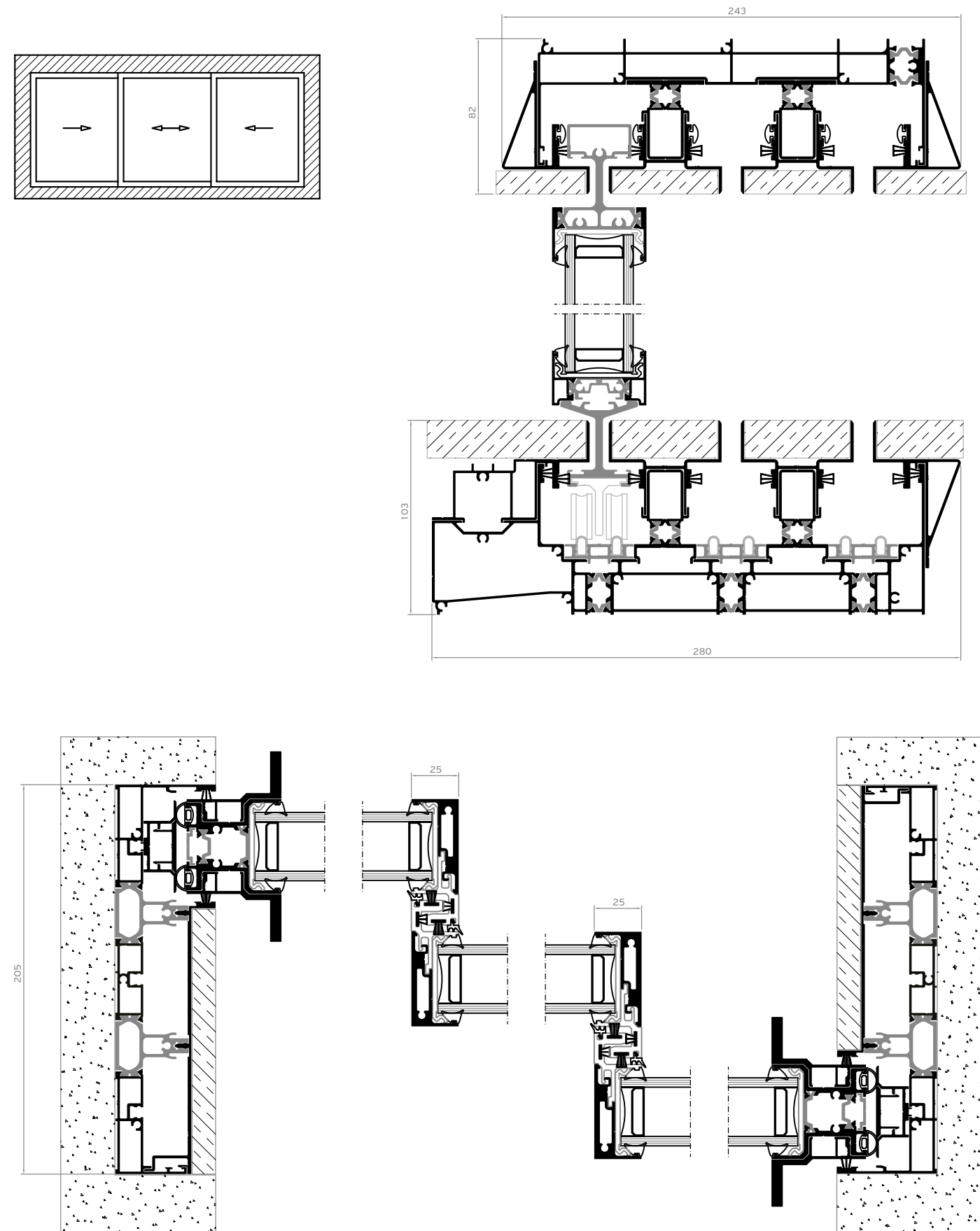
2 Sashes / 2 Track / Total Eclipse



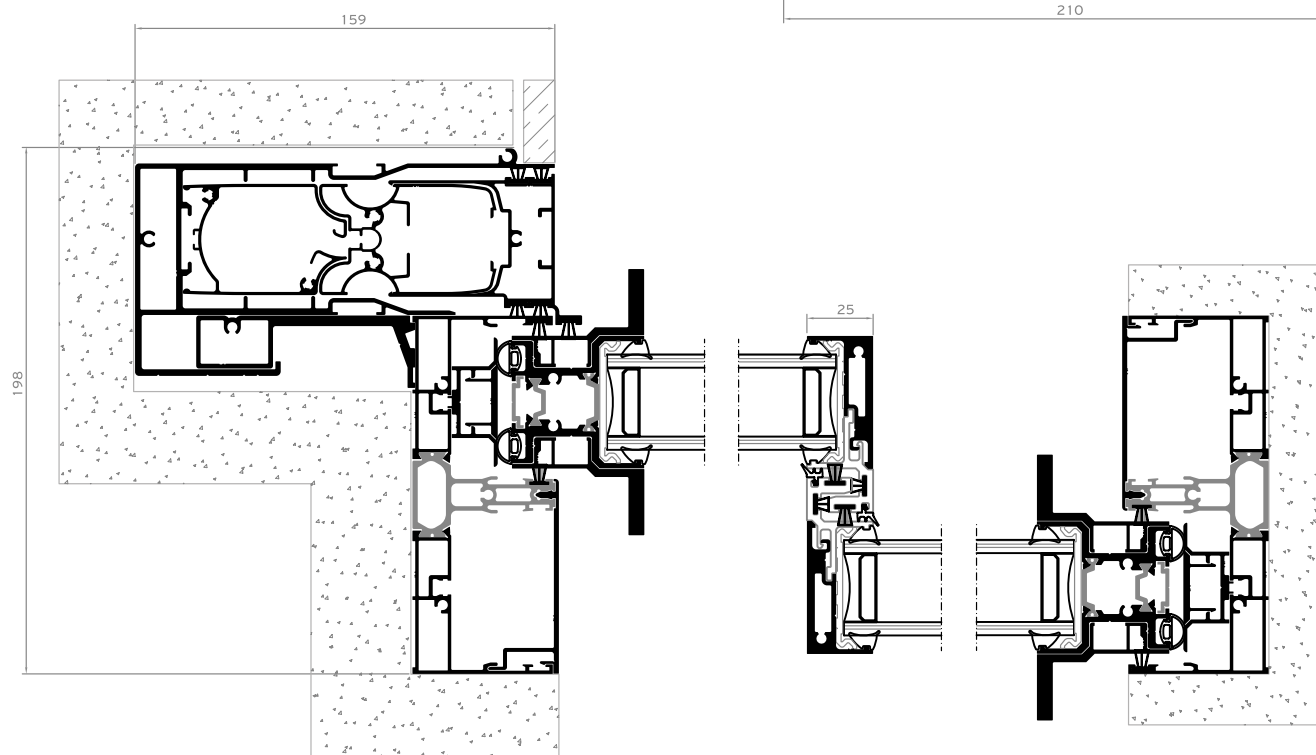
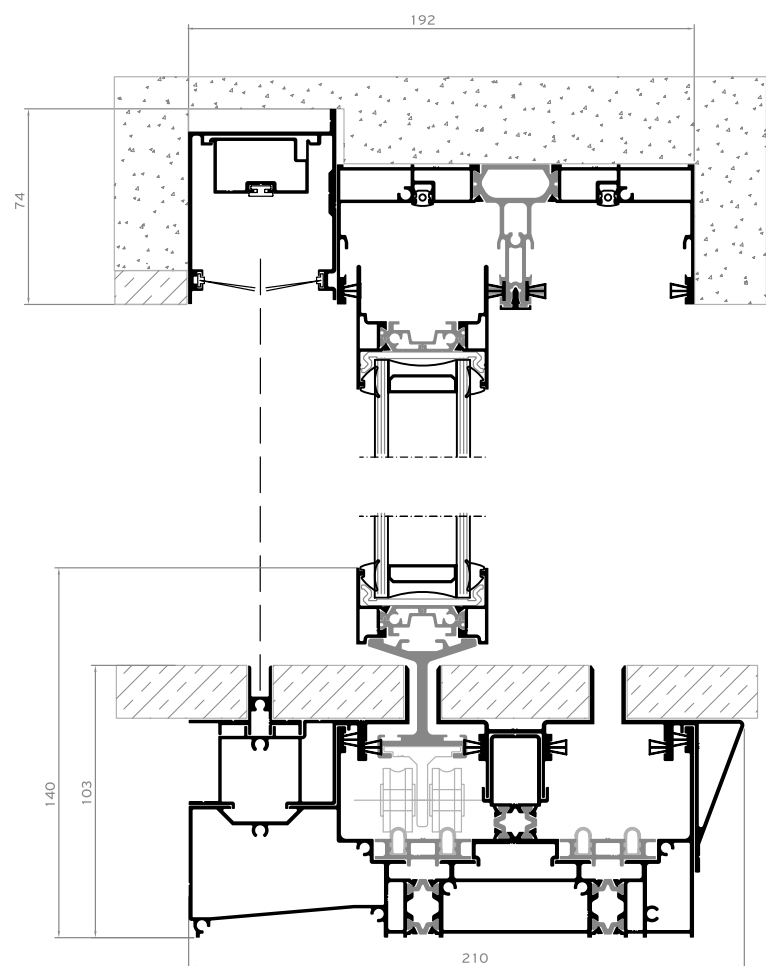
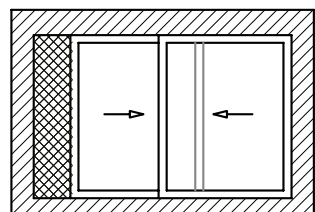
3 Sashes / 3 Track



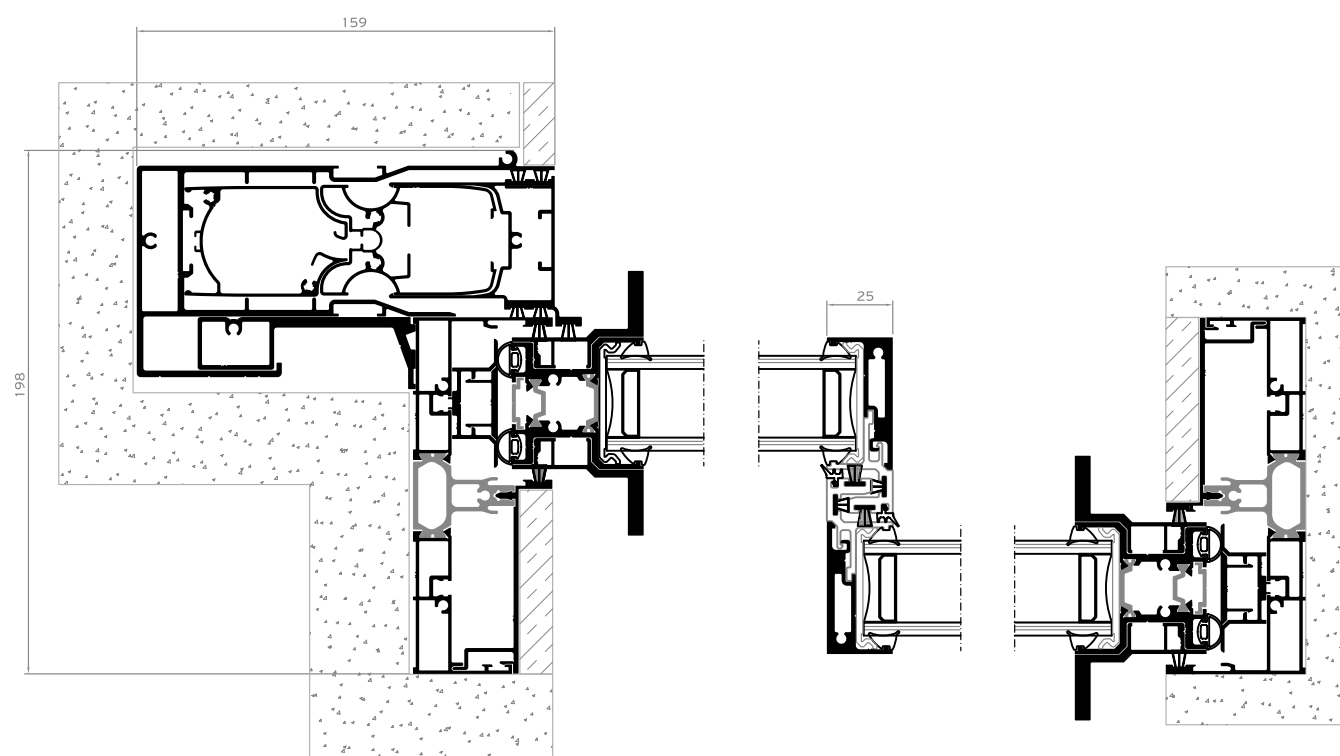
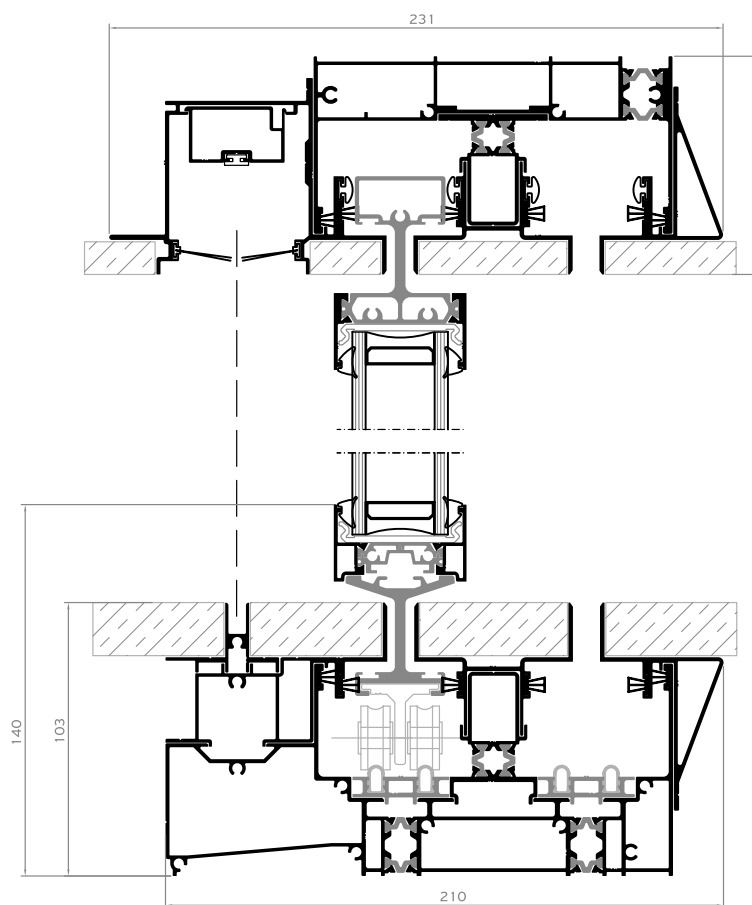
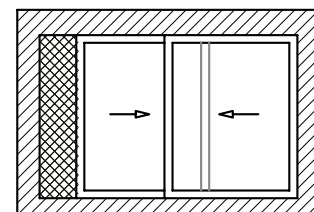
3 Sashes / 3 Track / Total Eclipse



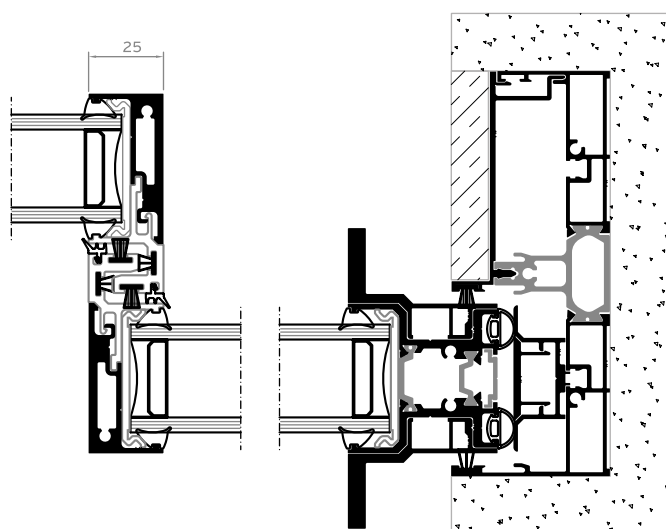
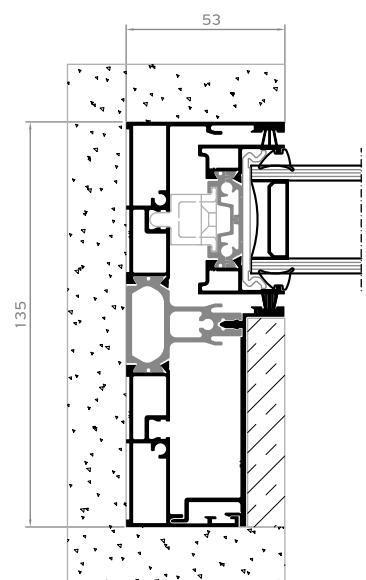
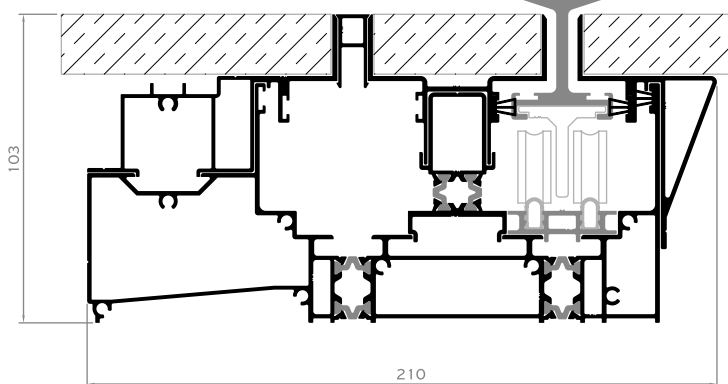
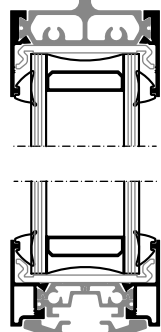
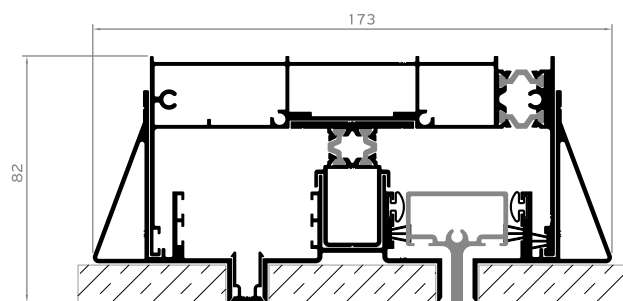
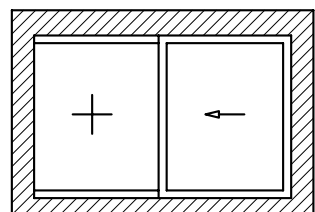
2 Sashes / 2 Track Integrated Flyscreen IFS



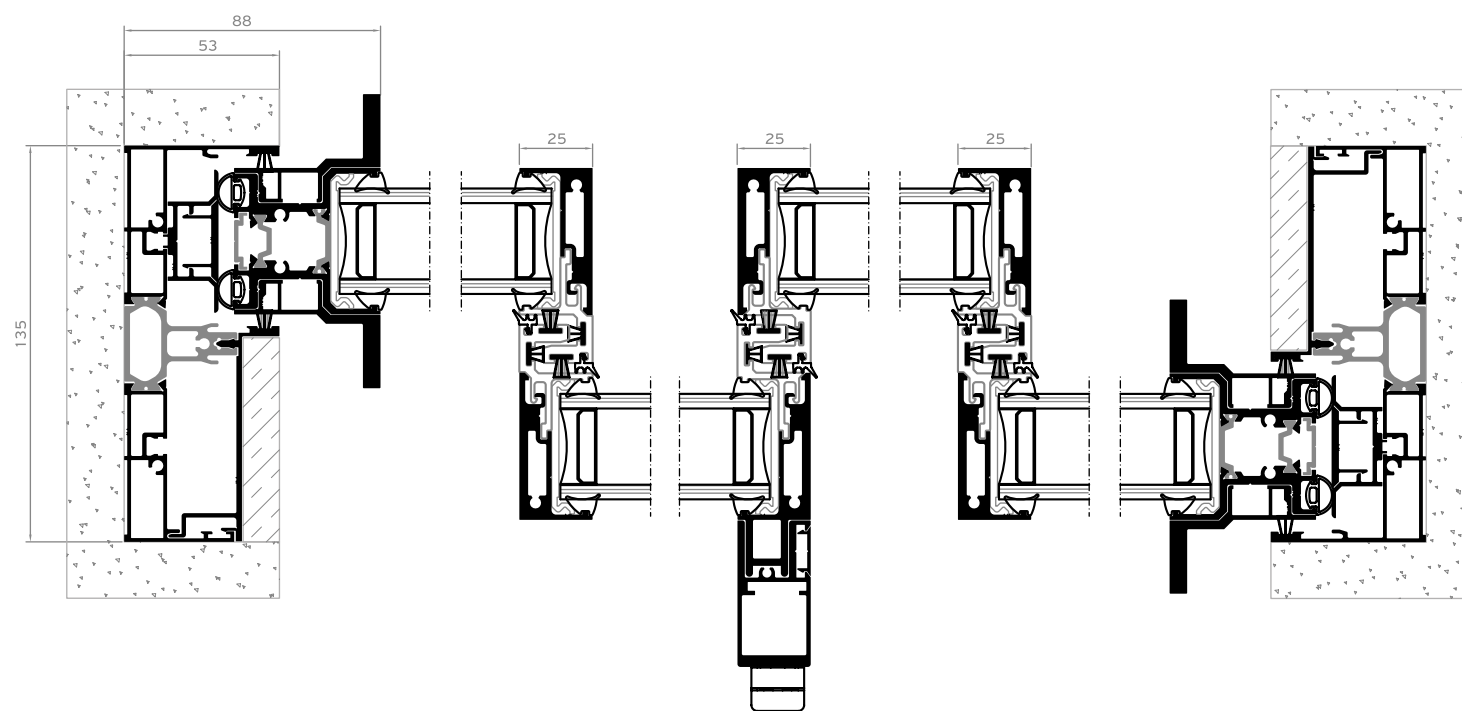
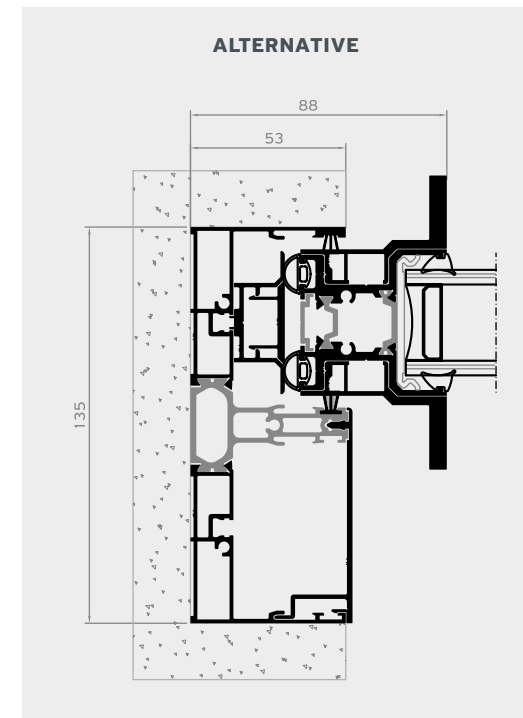
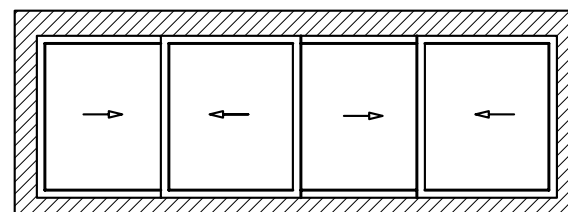
2 Sashes / 2 Track / Integrated Flyscreen IFS / Total Eclipse



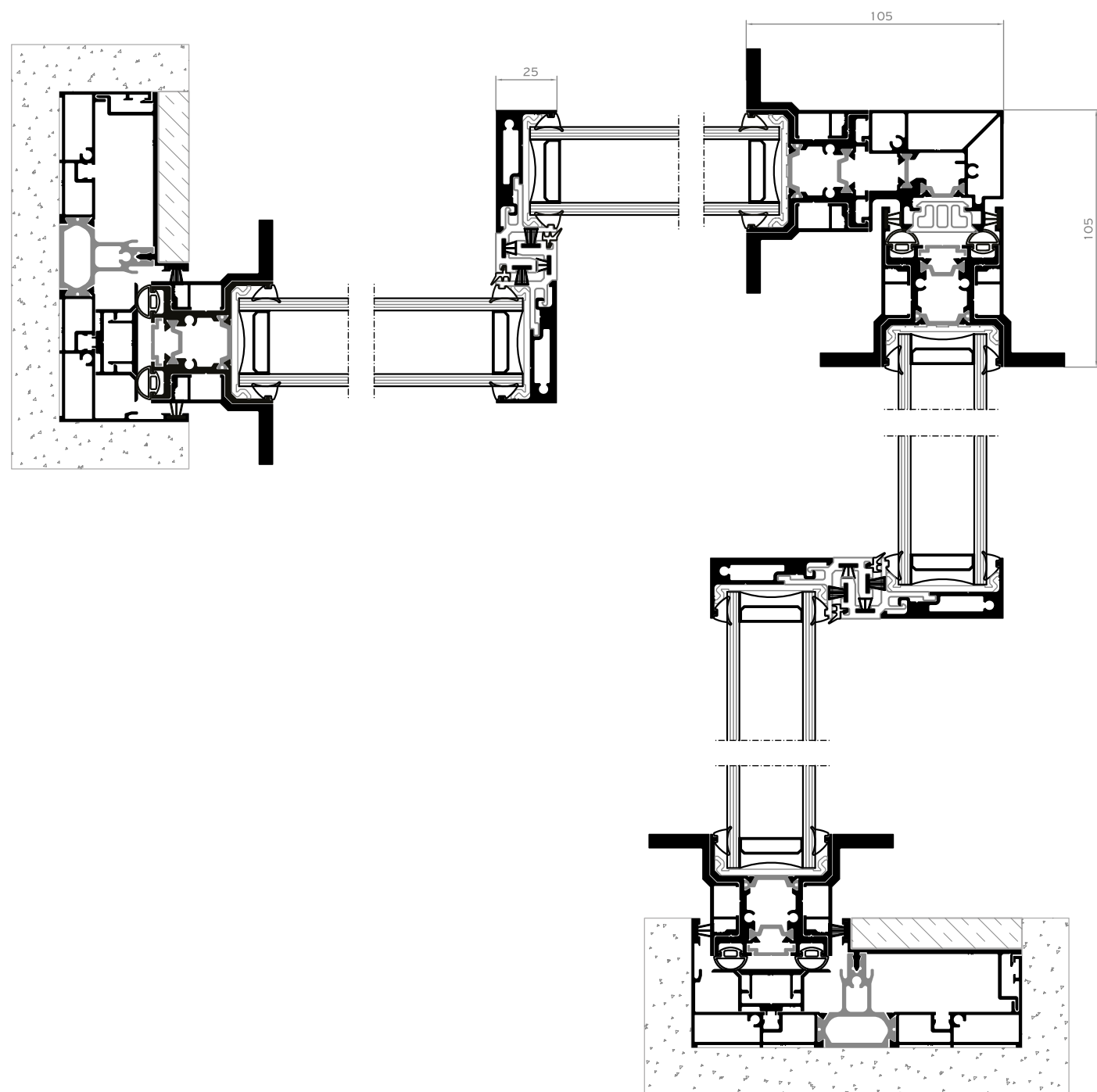
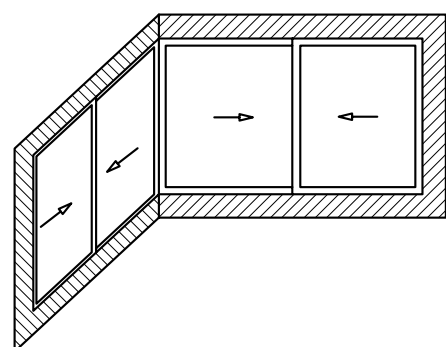
1 Sash / 1 Fixed



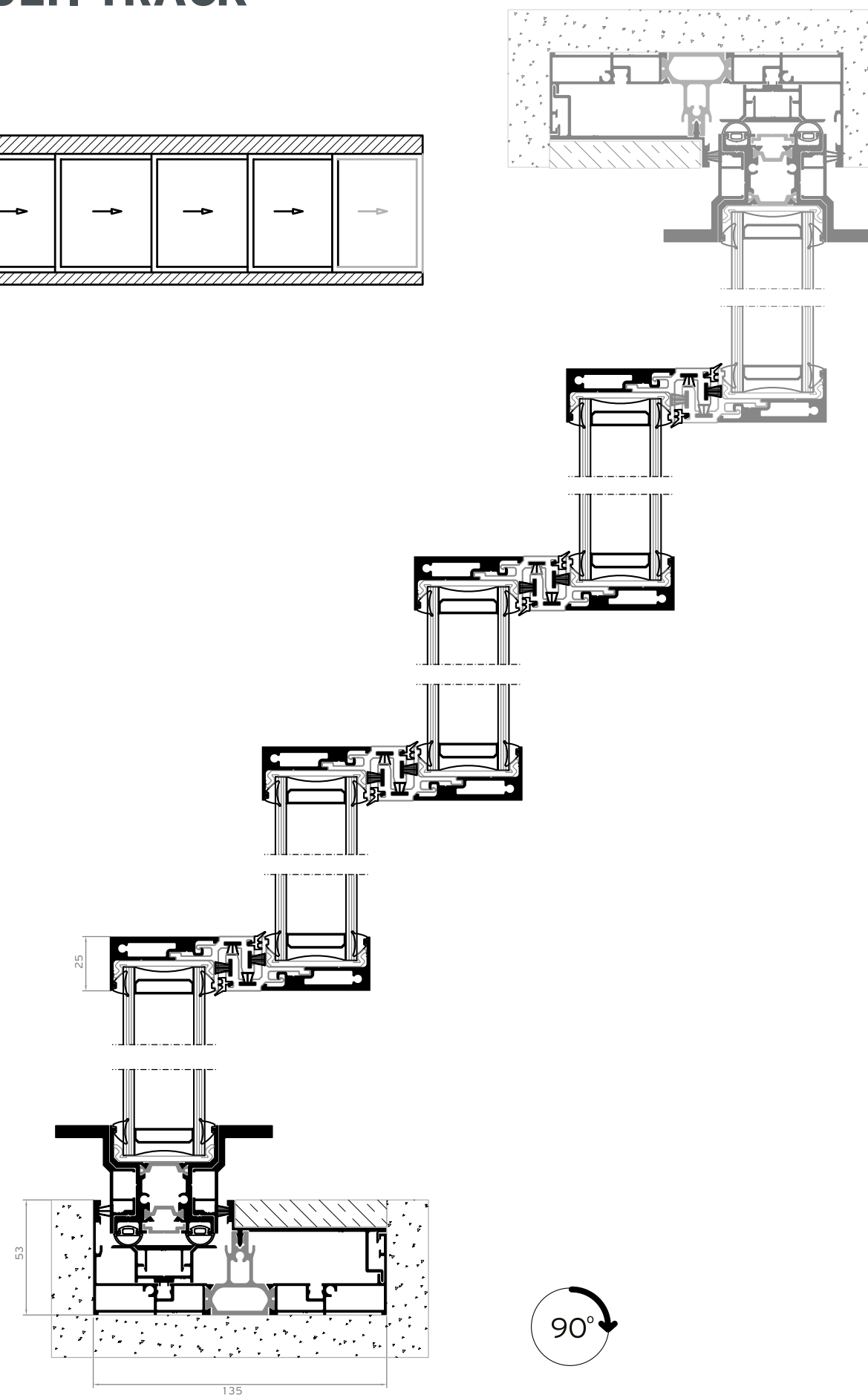
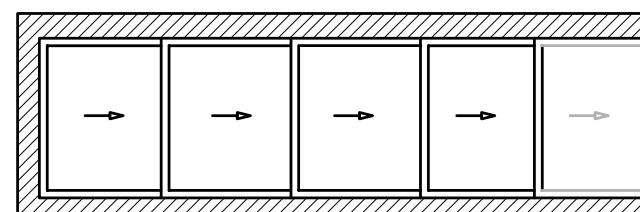
4 Sashes / 2 Track



EXTERNAL CORNER

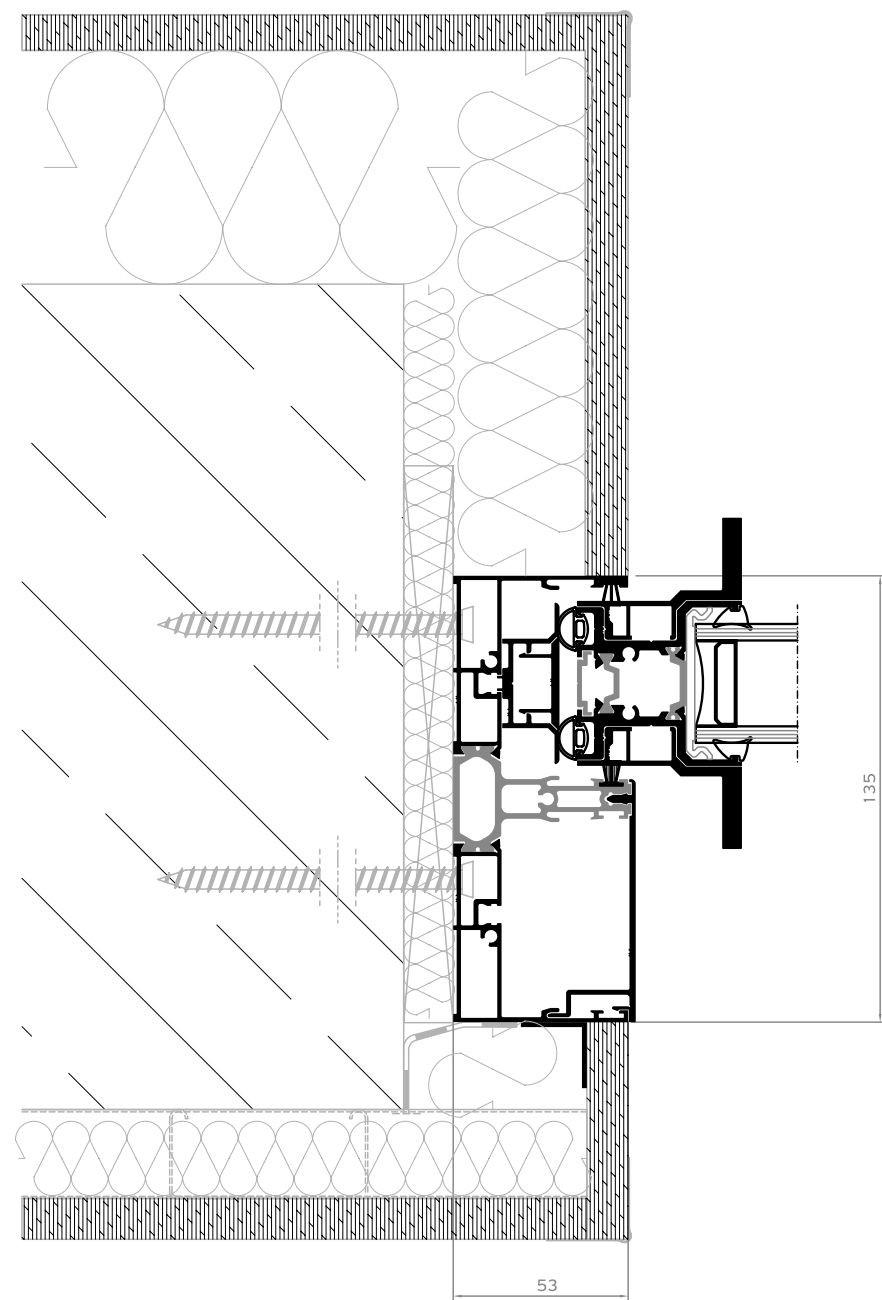


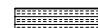

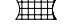


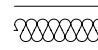

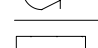



MULTI TRACK



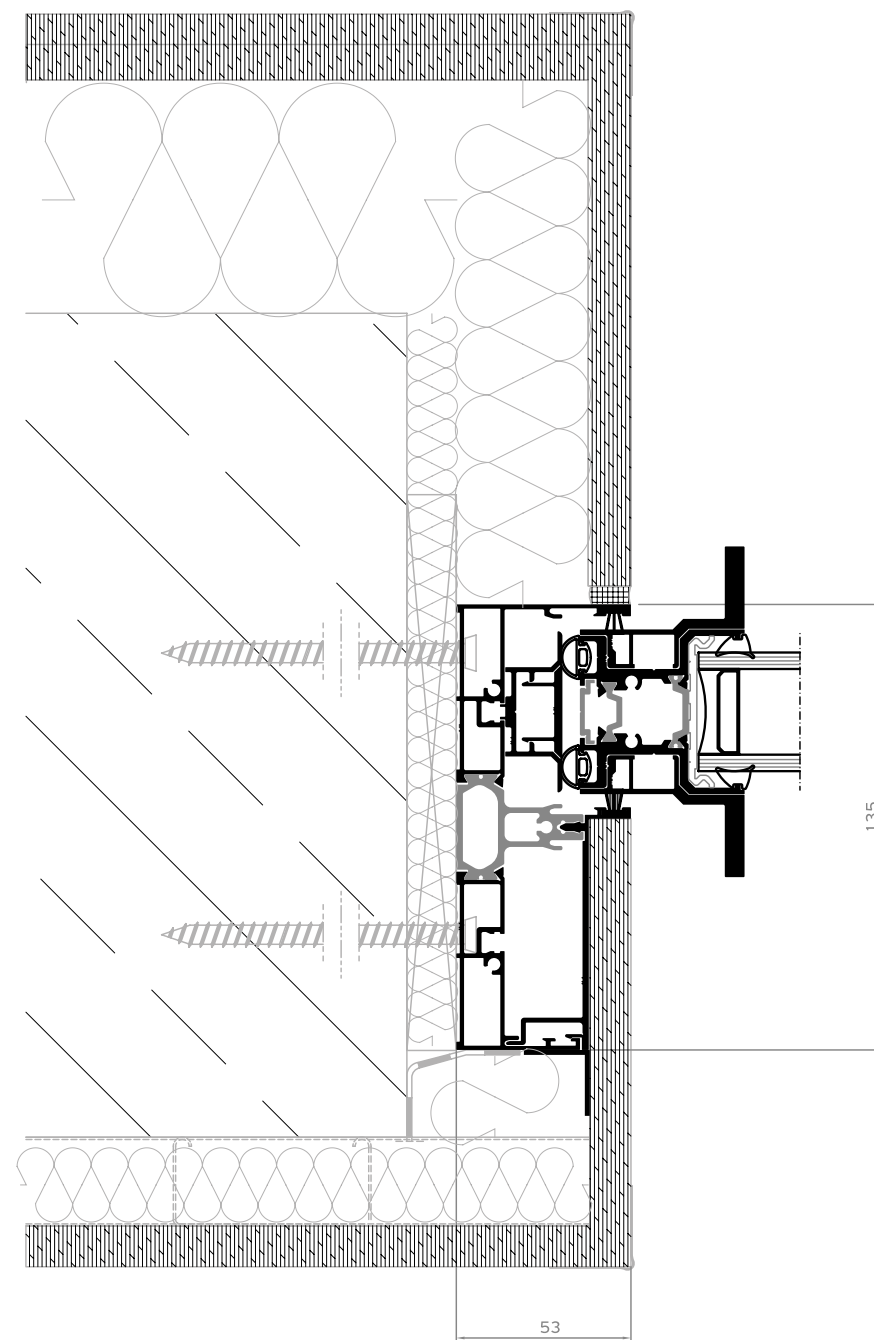
Installation

SIDE SECTION ECLIPSE



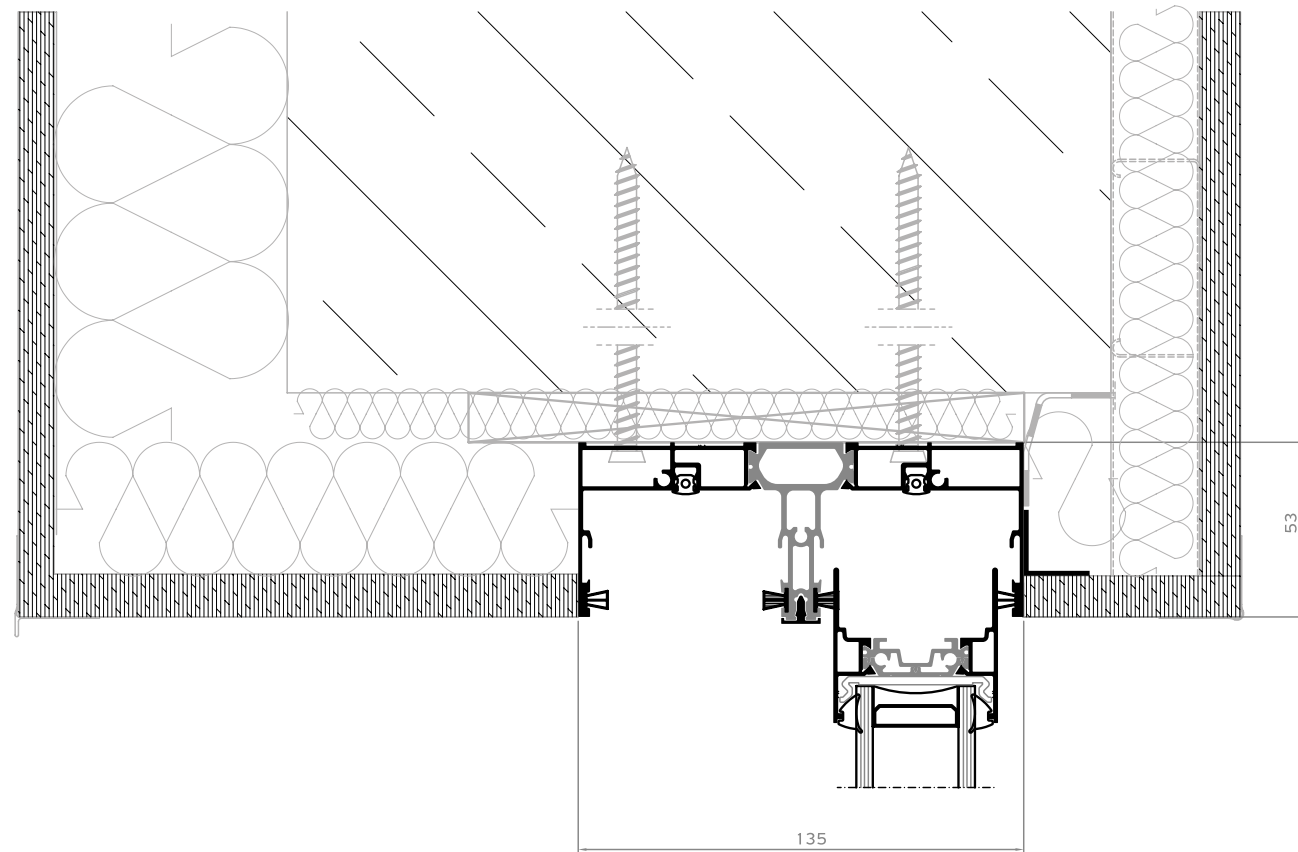
-  PRECOMPRESSED MULTI-FUNCTION SEALING TAPE
-  BACKER ROD
-  HYBRID SEALANT OR NEUTRAL SILICONE
-  STYRODUR HIGH DENSITY BOARD
-  MARBLE
-  POLYURETHANE FOAM
-  POLYSTYRENE
-  WALL CONSTRUCTION
-  WALL FINISH
-  REINFORCED CONCRETE
-  AIR WATER VAPOR BARRIER TAPE

SIDE SECTION TOTAL ECLIPSE

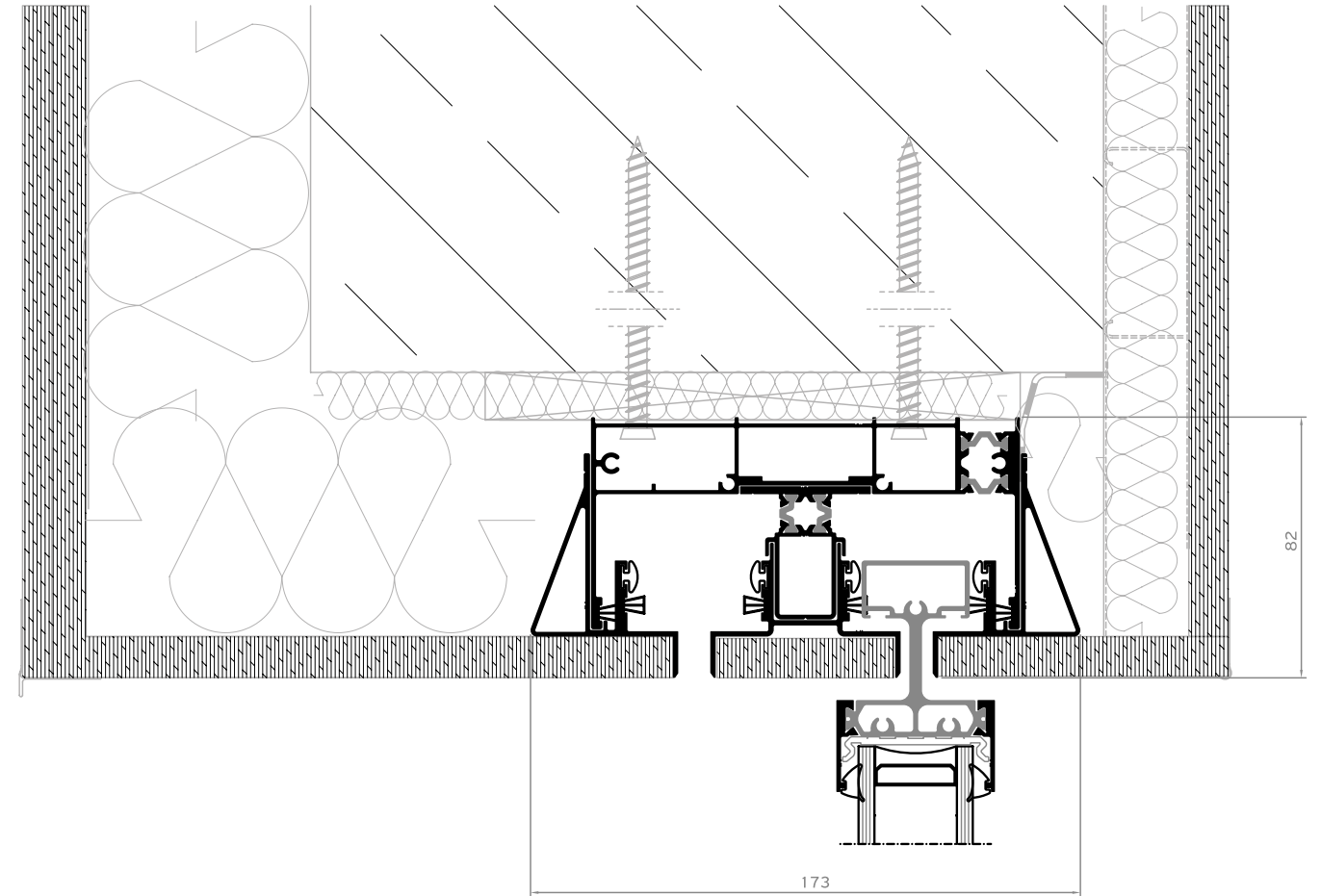


Installation

TOP SECTION
ECLIPSE

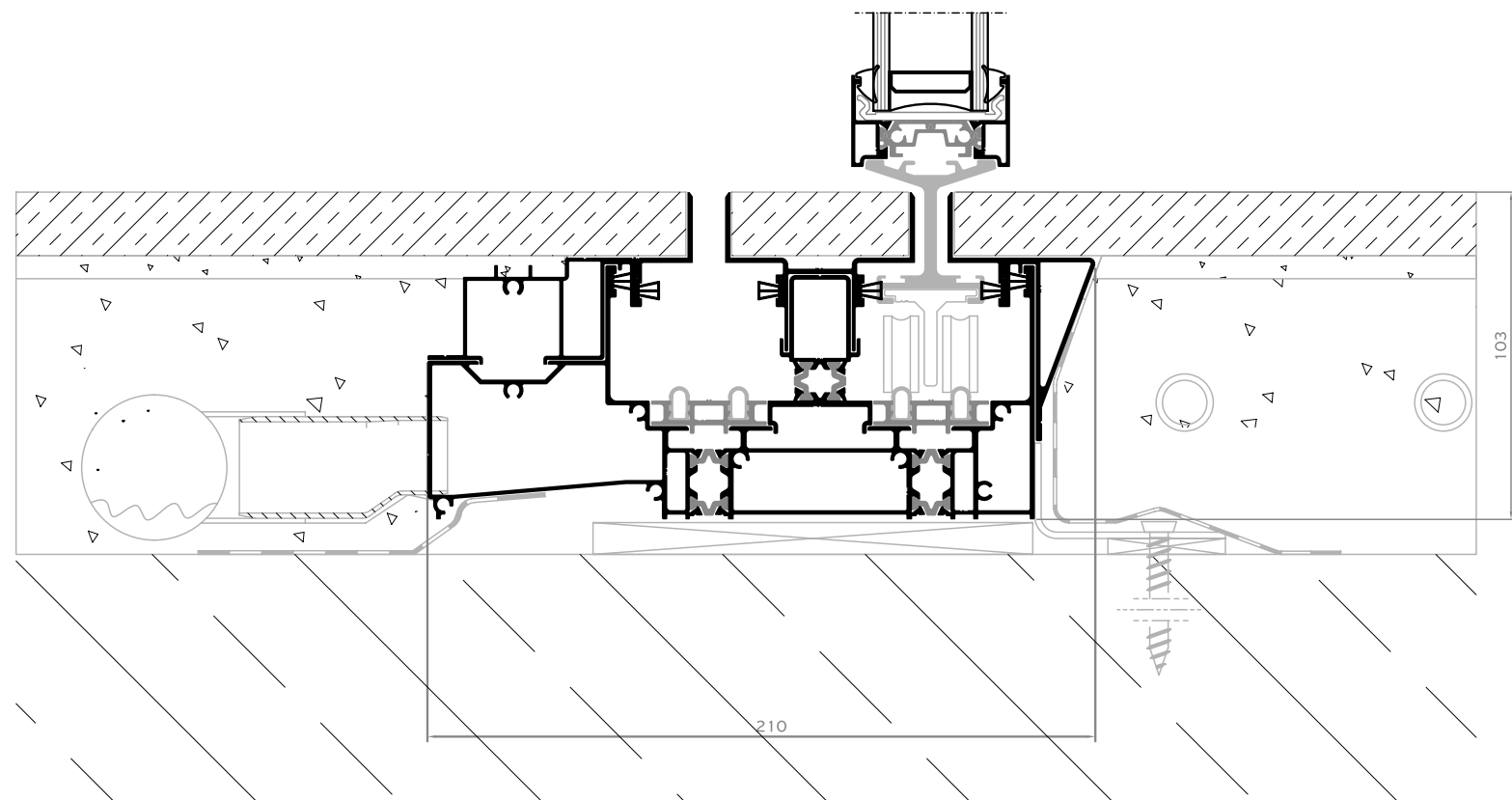


TOP SECTION
TOTAL ECLIPSE

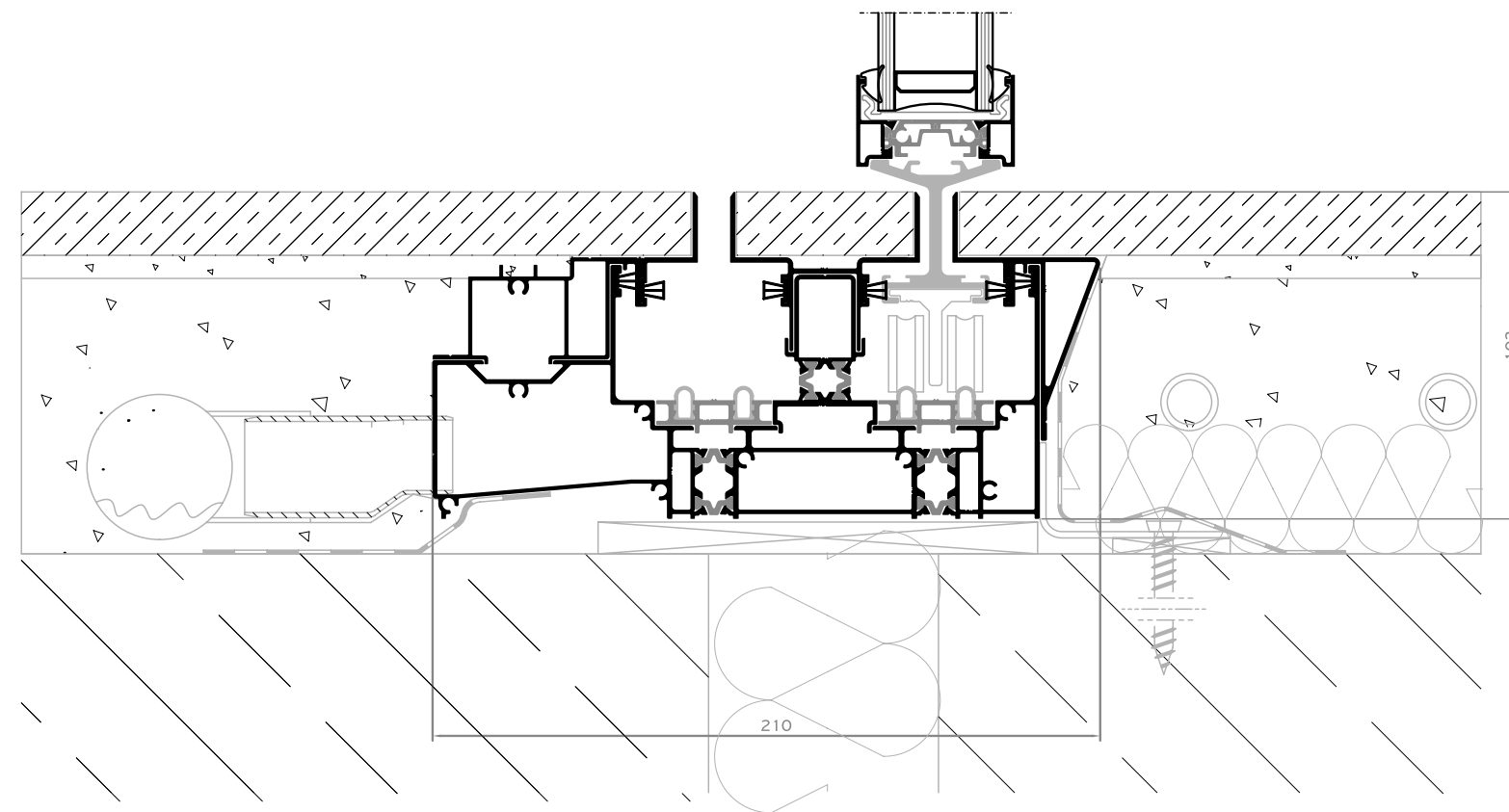


Installation

BOTTOM SECTION
VERSION A

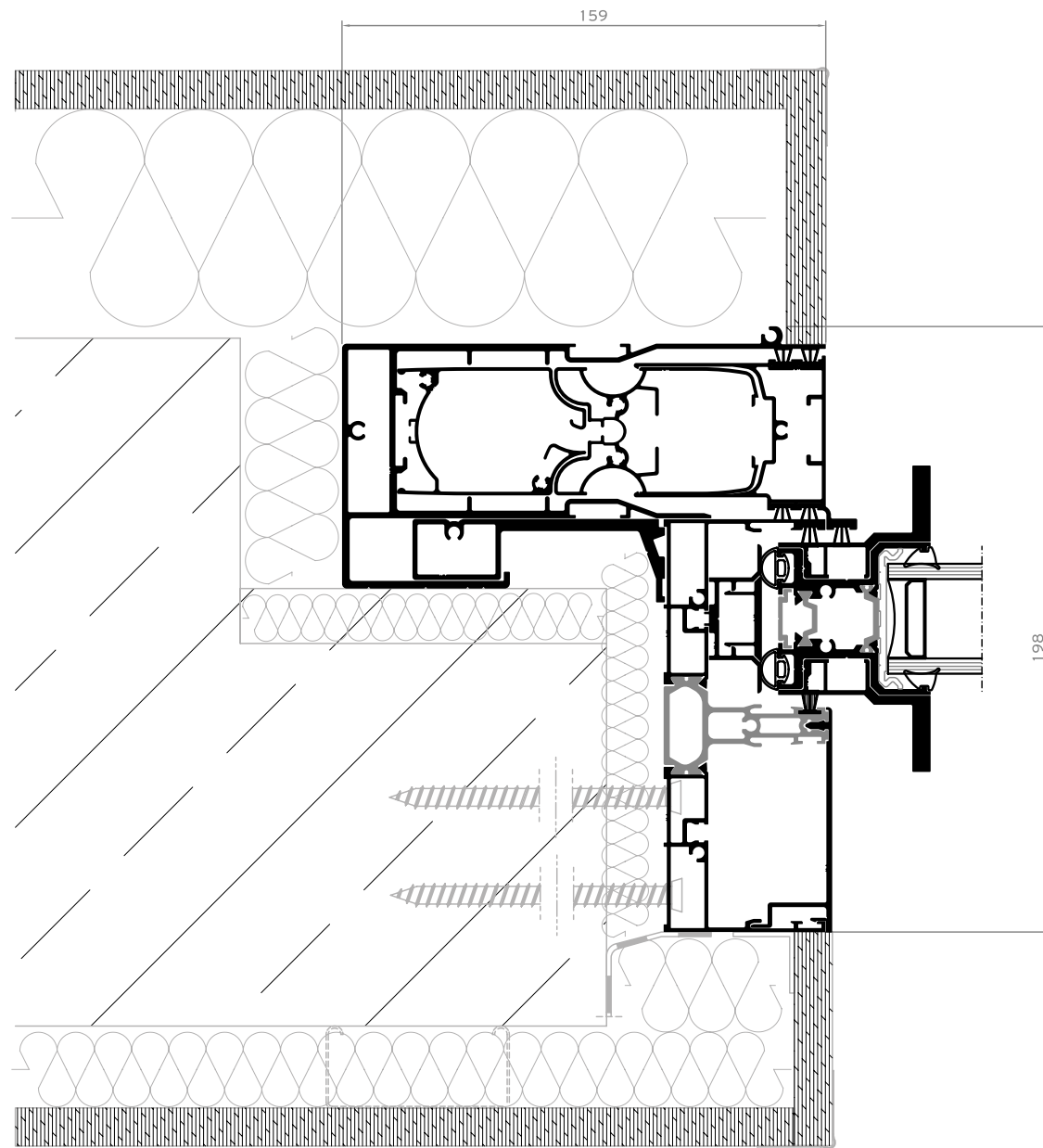


BOTTOM SECTION
VERSION B

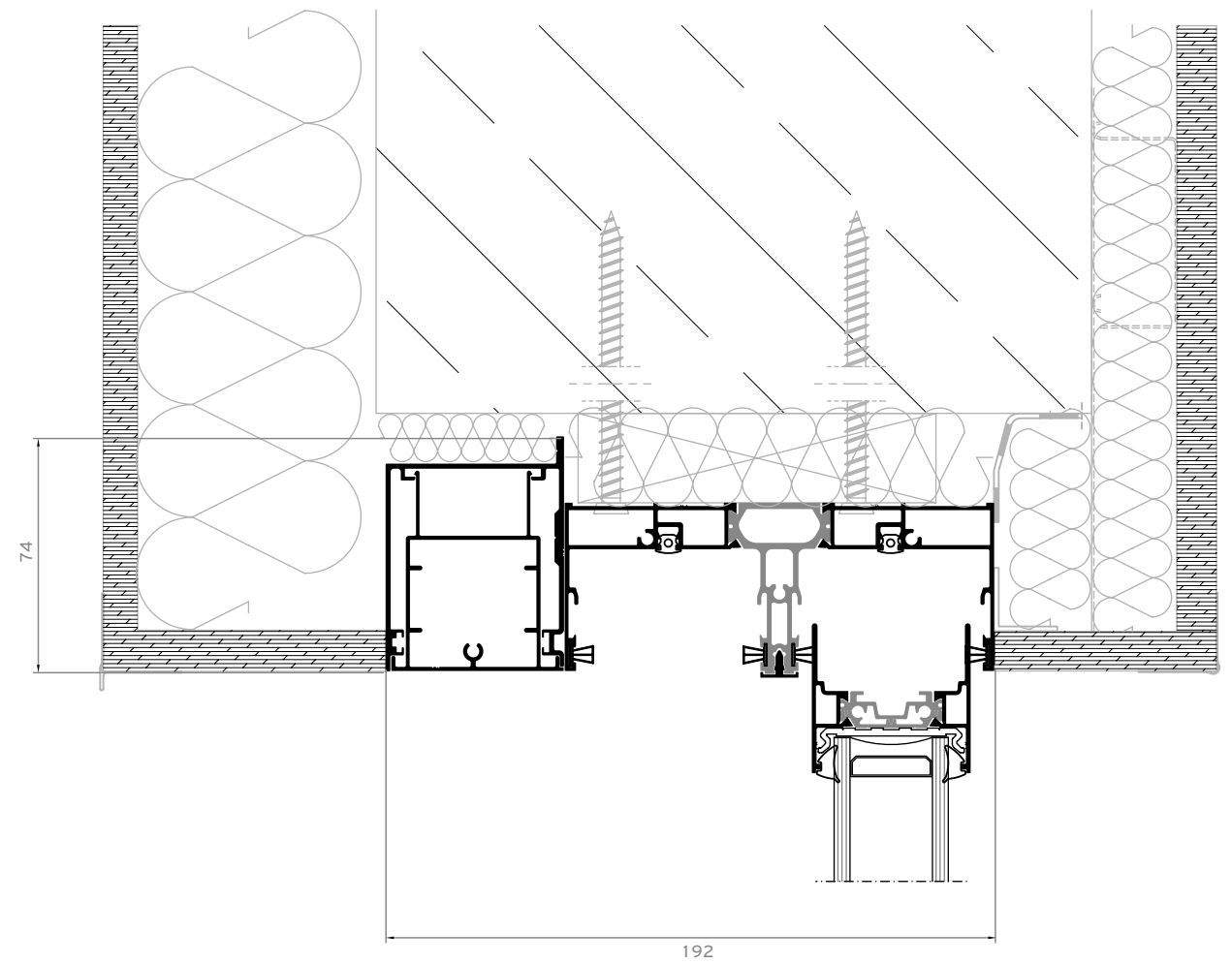


Installation

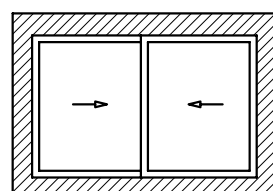
SIDE SECTION
WITH INTEGRATED FLYSCREEN IFS



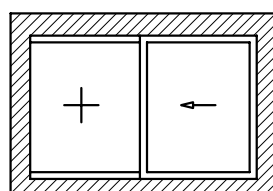
TOP SECTION
WITH INTEGRATED FLYSCREEN IFS



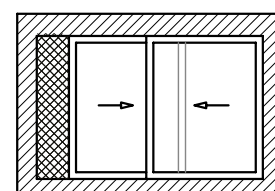
Applications



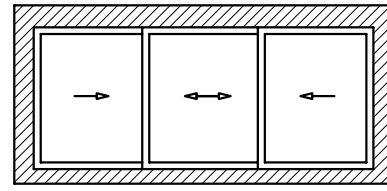
2 SASHES / 2 TRACK



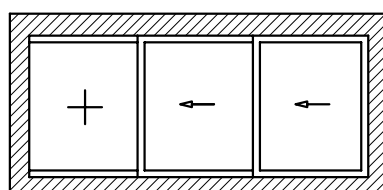
1 SASH / 1 FIXED



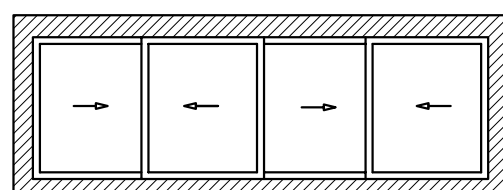
2 SASHES / 2 TRACK
INTEGRATED FLYSCREEN
IFS*



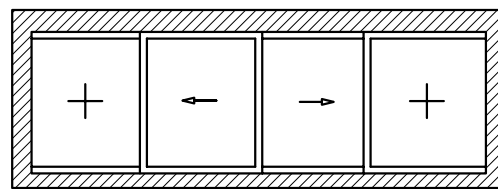
3 SASHES / 3 TRACK



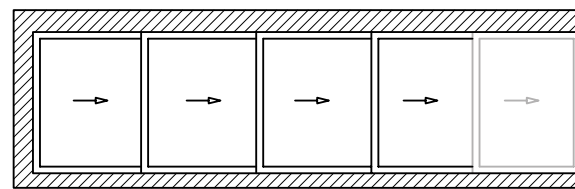
2 SASHES / 1 FIXED



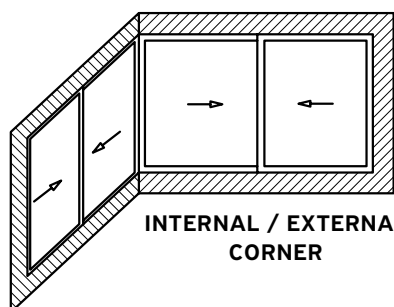
4 SASHES / 2 TRACK



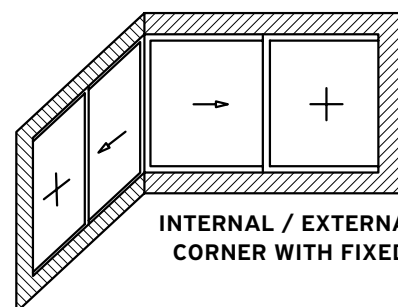
1 FIXED / 2 SASHES / 1 FIXED



MULTI TRACK



INTERNAL / EXTERNAL
CORNER



INTERNAL / EXTERNAL
CORNER WITH FIXED

* The solution of INTEGRATED FLYSCREEN IFS is available in more typologies of SUPREME S500, provided:
- it is concealed within the side walls
- it cooperates with the external sash of the typology

Table of performance

CERTIFICATION



WATER TIGHTNESS
EN 12208



AIR PERMEABILITY
EN 12207



WIND RESISTANCE
MAX TEST PRESSURE
EN 12210



WIND LOAD RESISTANCE
TO FRONTAL DEFLECTION
EN 12210



SOUND REDUCTION
EN 10140, EN 717

CLASSIFICATION

1A (0 Pa)	2A (50 Pa)	3A (100 Pa)	4A (150 Pa)	5A (200 Pa)	6A (250 Pa)	7A (300 Pa)	8A (450 Pa)	9A (600 Pa)
1		2		3		4		
1 (400 Pa)		2 (800 Pa)		3 (1200 Pa)		4 (1600 Pa)		5 (2000 Pa)
A (≤ 1/150)			B (≤ 1/200)			C (≤ 1/300)		
41 dB								

THERMAL PERFORMANCE

	DIMENSIONS IN MM (W x H)	U _w in W/m ² K (U _g = 0,8)	U _w in W/m ² K (U _g = 1,0)	U _w in W/m ² K (U _g = 1,1)
2 SASHES / 2 TRACK	2600 x 2400	1,39	1,55	1,64
2 SASHES / 2 TRACK	4000 x 3000	1,23	1,40	1,49

www.alumil.com

DISCOVER MORE:



WATCH THE VIDEO:



**ALUMIL
MIDDLE EAST DMCC**

MAZAYA BUSINESS AVENUE BB1
29TH FLOOR, OFFICE #2907
JUMEIRAH LAKES TOWERS,
DUBAI, UAE
TEL.: +971 4 4425930
FAX: +971 4 4416528
EMAIL: marketing.uae@alumil.com
www.alumil.ae

**ALUMIL
HEADQUARTERS**

KILKIS INDUSTRIAL AREA
KILKIS - GR 61100
TEL.: +30 23410 79300
E-MAIL.: info@alumil.com



**ALUMIL
MIDDLE EAST DMCC**

MAZAYA BUSINESS AVENUE BB1
29TH FLOOR, OFFICE #2907
JUMEIRAH LAKES TOWERS,
DUBAI, UAE

TEL.: +971 4 4425930
FAX: +971 4 4416528
EMAIL: marketing.uae@alumil.com

**ALUMIL
HEADQUARTERS**

KILKIS INDUSTRIAL AREA
KILKIS - GR 61100

TEL.: +30 23410 79300
E-MAIL: info@alumil.com

www.alumil.com

EN NOV 2024

The Alumil logo is displayed in a large, white, sans-serif font. The letter 'A' is stylized with a diagonal slash. A small yellow square is positioned above the letter 'i'. The logo is set against a background of a modern outdoor terrace with a stone wall, large glass windows, and a swimming pool. A large yellow diagonal graphic element is present in the bottom right corner of the page.

Alumil